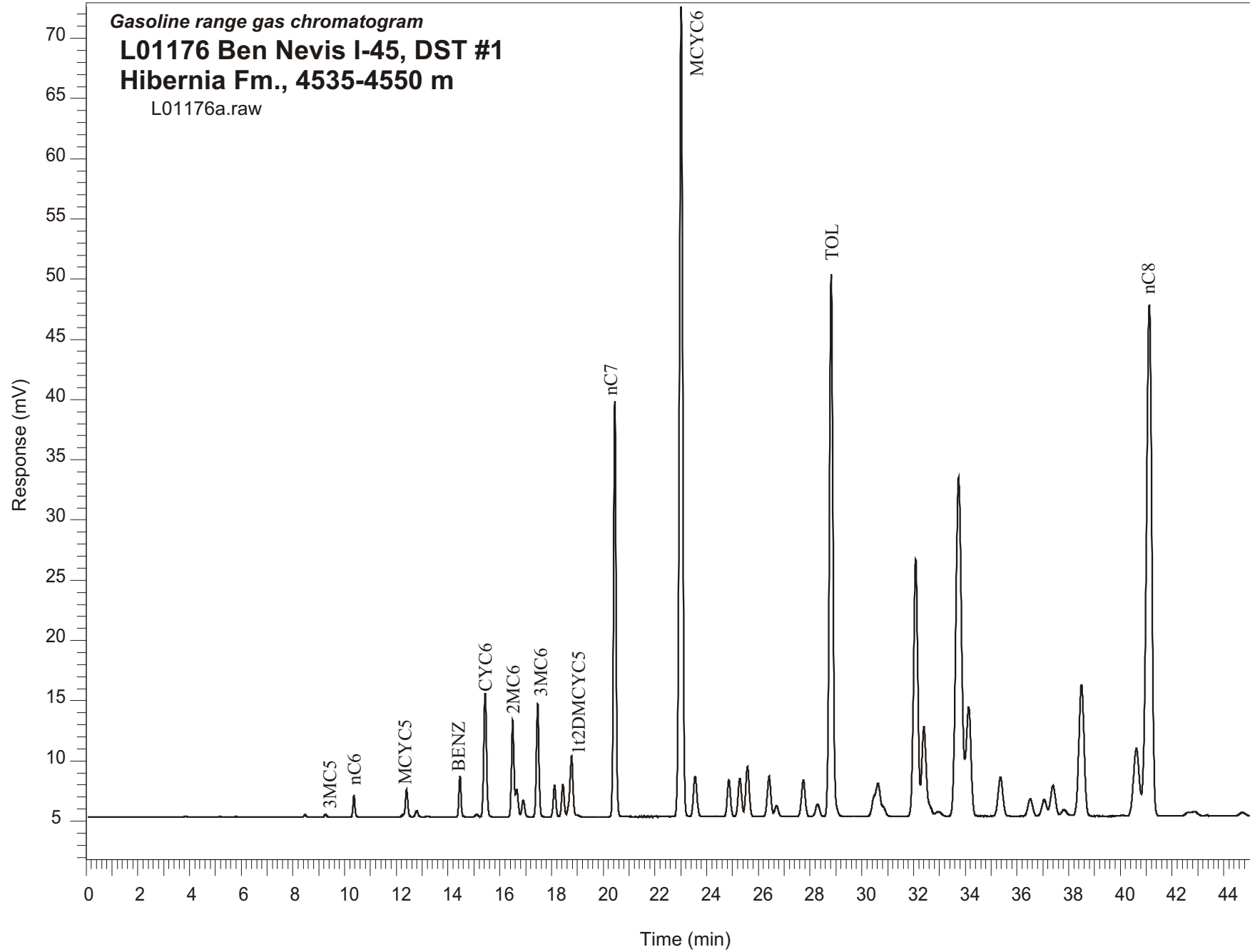


Gasoline range gas chromatogram
L01176 Ben Nevis I-45, DST #1
Hibernia Fm., 4535-4550 m
L01176a.raw



Sample Name: #1176 Ben Nevis I-45 DST#1

GASOLINE RANGE ANALYSIS DATA

ORGANIC GEOCHEMISTRY LAB GSC CALGARY

| Ret Time [min] | Compound | Area | Height [uV] |
|-------------------|-----------|--------|----------------|
| 5.8 | nC5 | 370 | 80 |
| 8.46 | 2MC5 | 1150 | 213 |
| 9.26 | 3MC5 | 1476 | 233 |
| 10.36 | nC6 | 9206 | 1823 |
| 12.25 | 22DMC5 | 936 | 205 |
| 12.39 | MCYC5 | 14820 | 2295 |
| 12.79 | 24DMC5 | 3681 | 525 |
| 13.21 | 223TMC4 | 407 | 61 |
| 14.46 | Benzene | 19613 | 3432 |
| 15.11 | 33DMC5 | 1721 | 240 |
| 15.43 | CYC6 | 76679 | 10264 |
| 16.5 | 2MC6 | 55358 | 8034 |
| 16.66 | 23DMC5 | 15485 | 2300 |
| 16.91 | 11DMCYC5 | 10855 | 1409 |
| 17.46 | 3MC6 | 65678 | 9372 |
| 18.12 | 1c3DMCYC5 | 18702 | 2629 |
| 18.44 | 1t3DMCYC5 | 18500 | 2621 |
| 18.77 | 1t2DMCYC5 | 41461 | 4937 |
| 20.45 | nC7 | 238567 | 34547 |
| 23.01 | MCYC6 | 582037 | 67252 |
| 23.56 | 22DMC6 | 31490 | 3324 |
| 24.86 | ECYC5 | 26100 | 3032 |
| 25.28 | 25DMC6 | 28833 | 3161 |
| 25.58 | 24DMC6 | 38658 | 4137 |
| 26.41 | 223TMC5 | 32583 | 3343 |
| 28.29 | 234TMC5 | 10836 | 1033 |
| 28.82 | Toluene | 431909 | 45020 |
| 32.09 | 2MC7 | 244537 | 21338 |
| 34.14 | 3MC7 | 119064 | 9080 |
| 40.62 | 1c4DMCYC6 | 85698 | 5583 |
| 41.12 | nC8 | 612341 | 42438 |