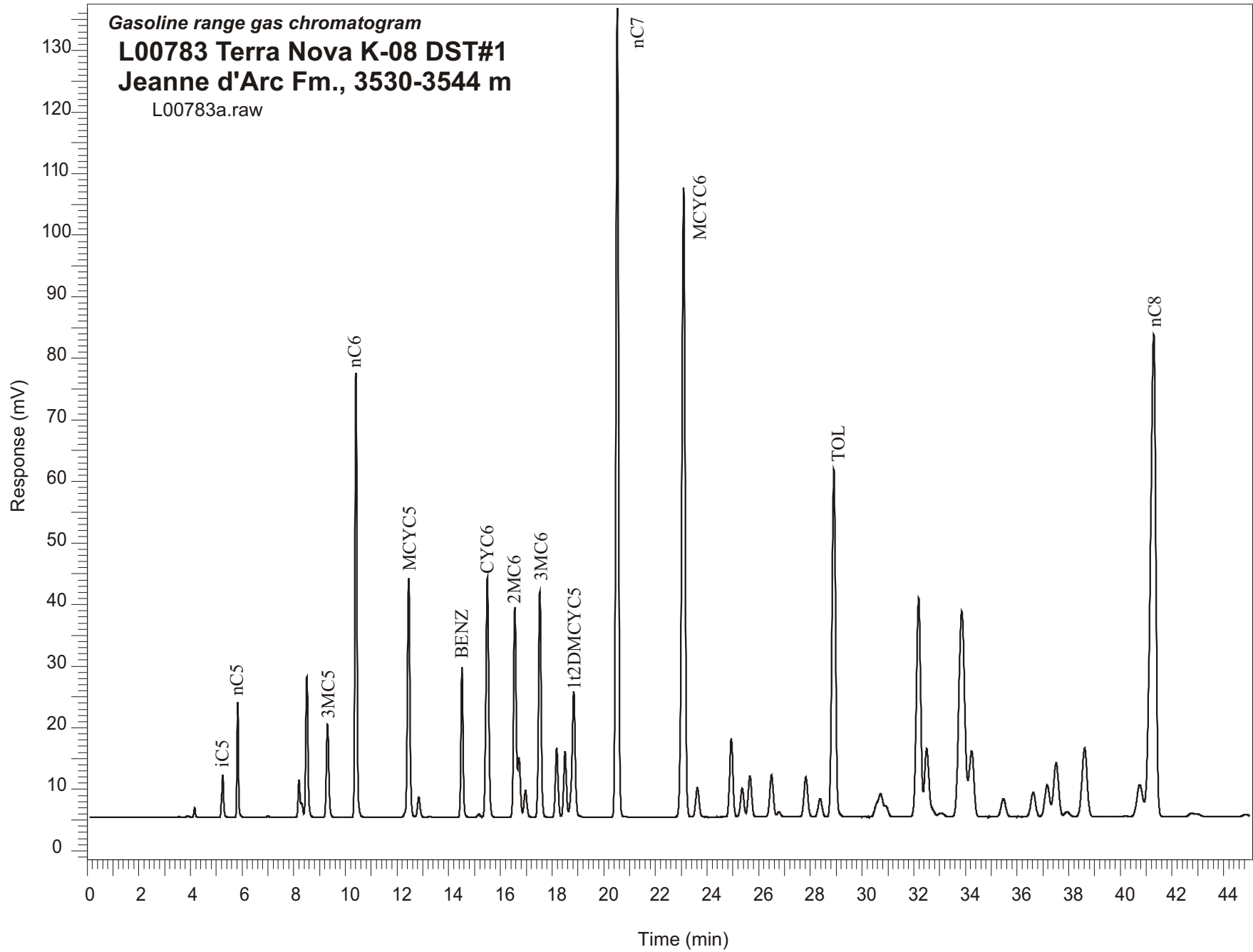


Gasoline range gas chromatogram
L00783 Terra Nova K-08 DST#1
Jeanne d'Arc Fm., 3530-3544 m
L00783a.raw



Sample Name: #783 Terra Nova K-08 DST#1

GASOLINE RANGE ANALYSIS DATA

ORGANIC GEOCHEMISTRY LAB GSC CALGARY

Ret Time [min]	Compound	Area	Height [uV]
5.25	iC5	36223	6861
5.83	nC5	72180	18757
7	22DMC4	1410	278
8.2	CYC5	33298	6135
8.31	23DMC4	10738	2319
8.5	2MC5	137658	22866
9.31	3MC5	99070	15095
10.41	nC6	379554	72217
12.45	MCYC5	258460	38791
12.84	24DMC5	23915	3301
13.27	223TMC4	895	140
14.51	Benzene	141948	24416
15.17	33DMC5	3784	528
15.49	CYC6	299554	39016
16.56	2MC6	240470	34174
16.72	23DMC5	65215	9626
16.97	11DMCYC5	33418	4339
17.53	3MC6	261423	36660
18.18	1c3DMCYC5	82730	11270
18.5	1t3DMCYC5	79554	10738
18.84	1t2DMCYC5	179204	20446
20.53	nC7	925674	131388
23.09	MCYC6	909634	102229
23.62	22DMC6	44328	4808
24.94	ECYC5	111166	12720
25.36	25DMC6	42371	4608
25.66	24DMC6	62413	6635
26.5	223TMC5	66704	6804
28.38	234TMC5	31345	2970
28.91	Toluene	543824	56465
32.19	2MC7	411285	35655
34.24	3MC7	138966	10740
40.75	1c4DMCYC6	80203	5185
41.29	nC8	1159989	78346