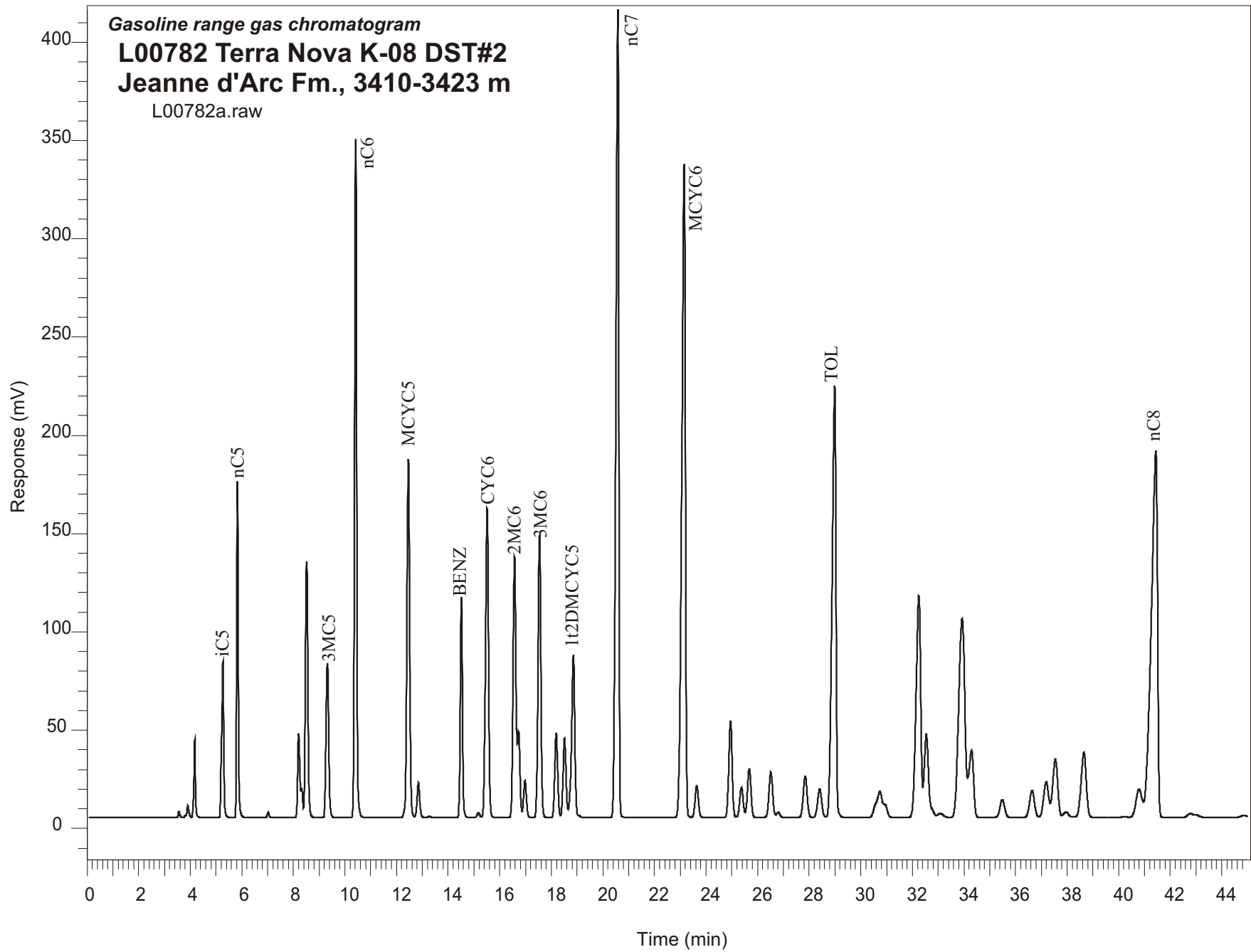


Gasoline range gas chromatogram  
**L00782 Terra Nova K-08 DST#2**  
**Jeanne d'Arc Fm., 3410-3423 m**  
L00782a.raw



Sample Name: #782 Terra Nova K-08 DST #2

-----  
GASOLINE RANGE ANALYSIS DATA  
-----

ORGANIC GEOCHEMISTRY LAB GSC CALGARY  
-----

Ret Time [min]	Compound	Area	Height [uV]
5.27	iC5	460235	79248
5.83	nC5	720511	171090
7.02	22DMC4	12617	2653
8.2	CYC5	261114	42967
8.32	23DMC4	65260	14905
8.51	2MC5	898228	130261
9.32	3MC5	569342	78480
10.42	nC6	1897446	345879
12.46	MCYC5	1355608	182710
12.85	24DMC5	129419	17687
13.27	223TMC4	4307	648
14.51	Benzene	660151	112260
15.18	33DMC5	17844	2471
15.51	CYC6	1300693	157282
16.58	2MC6	1038633	133102
16.73	23DMC5	287258	43906
16.98	11DMCYC5	142843	18933
17.55	3MC6	1114163	143801
18.19	1c3DMCYC5	344154	42954
18.51	1t3DMCYC5	326449	40268
18.86	1t2DMCYC5	737552	82687
20.58	nC7	3167962	411374
23.15	MCYC6	3245453	332284
23.64	22DMC6	147111	16280
24.95	ECYC5	438842	49028
25.37	25DMC6	147258	15452
25.68	24DMC6	238931	24675
26.51	223TMC5	237785	23147
28.41	234TMC5	163039	14649
28.99	Toluene	2280910	219599
32.25	2MC7	1408025	112821
34.3	3MC7	219264	22654
40.79	1c4DMCYC6	234620	14391
41.44	nC8	3176861	186588