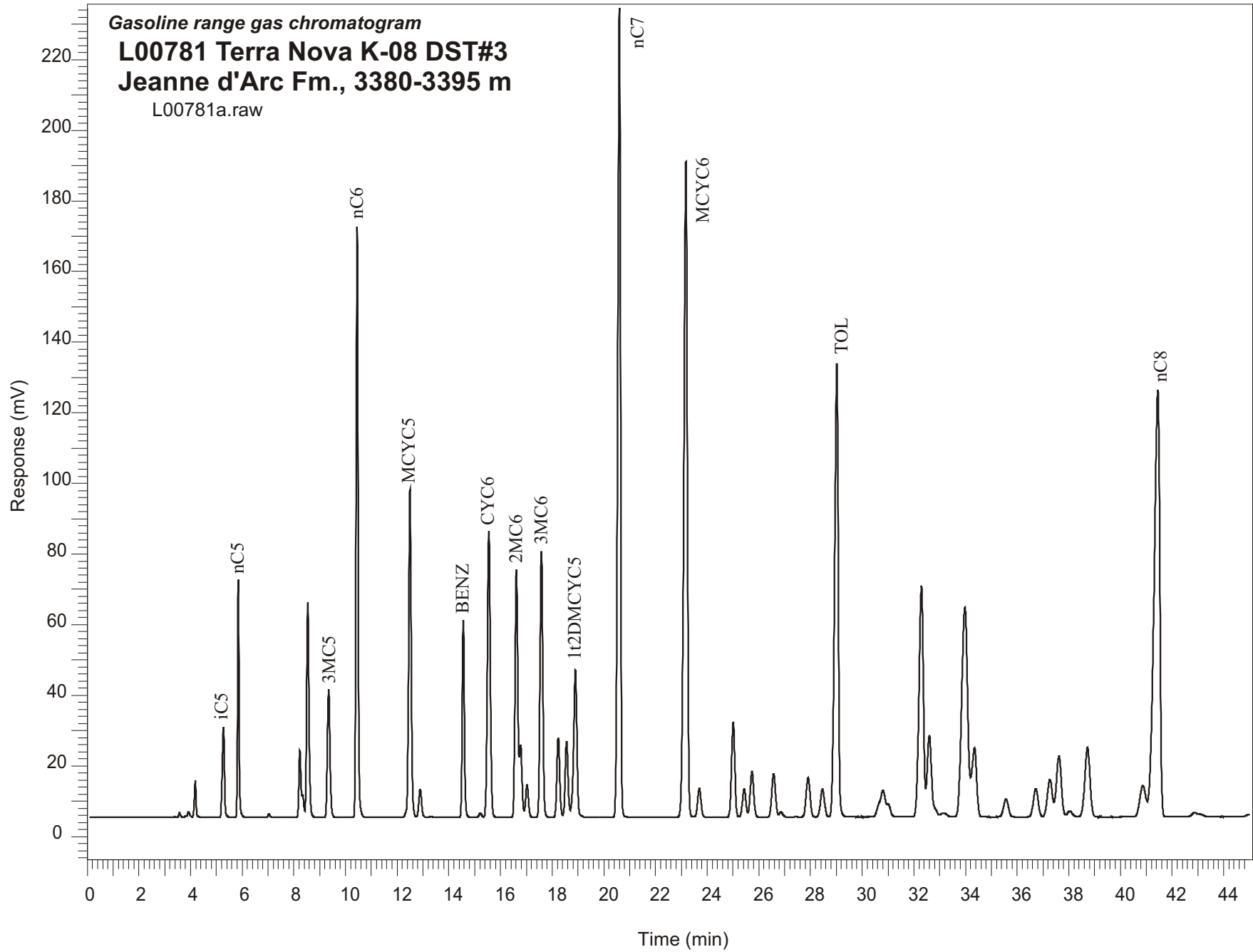


Gasoline range gas chromatogram
L00781 Terra Nova K-08 DST#3
Jeanne d'Arc Fm., 3380-3395 m
L00781a.raw



Sample Name: #781 Terra Nova K-08 DST#3

GASOLINE RANGE ANALYSIS DATA

ORGANIC GEOCHEMISTRY LAB GSC CALGARY

| Ret Time [min] | Compound | Area | Height [uV] |
|-------------------|-----------|---------|----------------|
| 5.28 | iC5 | 154829 | 25534 |
| 5.85 | nC5 | 271145 | 67239 |
| 7.04 | 22DMC4 | 5060 | 978 |
| 8.23 | CYC5 | 110432 | 18891 |
| 8.34 | 23DMC4 | 26698 | 6242 |
| 8.54 | 2MC5 | 393499 | 60787 |
| 9.35 | 3MC5 | 252702 | 36148 |
| 10.45 | nC6 | 904842 | 167392 |
| 12.49 | MCYC5 | 650184 | 92941 |
| 12.89 | 24DMC5 | 60801 | 8067 |
| 13.31 | 223TMC4 | 2160 | 298 |
| 14.56 | Benzene | 329517 | 55867 |
| 15.22 | 33DMC5 | 8462 | 1171 |
| 15.55 | CYC6 | 652482 | 81033 |
| 16.62 | 2MC6 | 513463 | 70125 |
| 16.77 | 23DMC5 | 141993 | 20620 |
| 17.02 | 11DMCYC5 | 70670 | 9157 |
| 17.59 | 3MC6 | 557173 | 75221 |
| 18.24 | 1c3DMCYC5 | 174452 | 22575 |
| 18.56 | 1t3DMCYC5 | 166448 | 21434 |
| 18.9 | 1t2DMCYC5 | 372786 | 41721 |
| 20.6 | nC7 | 1661624 | 229496 |
| 23.18 | MCYC6 | 1736853 | 185906 |
| 23.7 | 22DMC6 | 75475 | 8142 |
| 25.01 | ECYC5 | 238940 | 26972 |
| 25.43 | 25DMC6 | 76558 | 8092 |
| 25.73 | 24DMC6 | 125055 | 12941 |
| 26.57 | 223TMC5 | 126464 | 12303 |
| 28.46 | 234TMC5 | 86130 | 7872 |
| 29.02 | Toluene | 1266112 | 128274 |
| 32.29 | 2MC7 | 775388 | 65418 |
| 34.35 | 3MC7 | 253333 | 19518 |
| 40.86 | 1c4DMCYC6 | 140471 | 8805 |
| 41.45 | nC8 | 1878598 | 120927 |