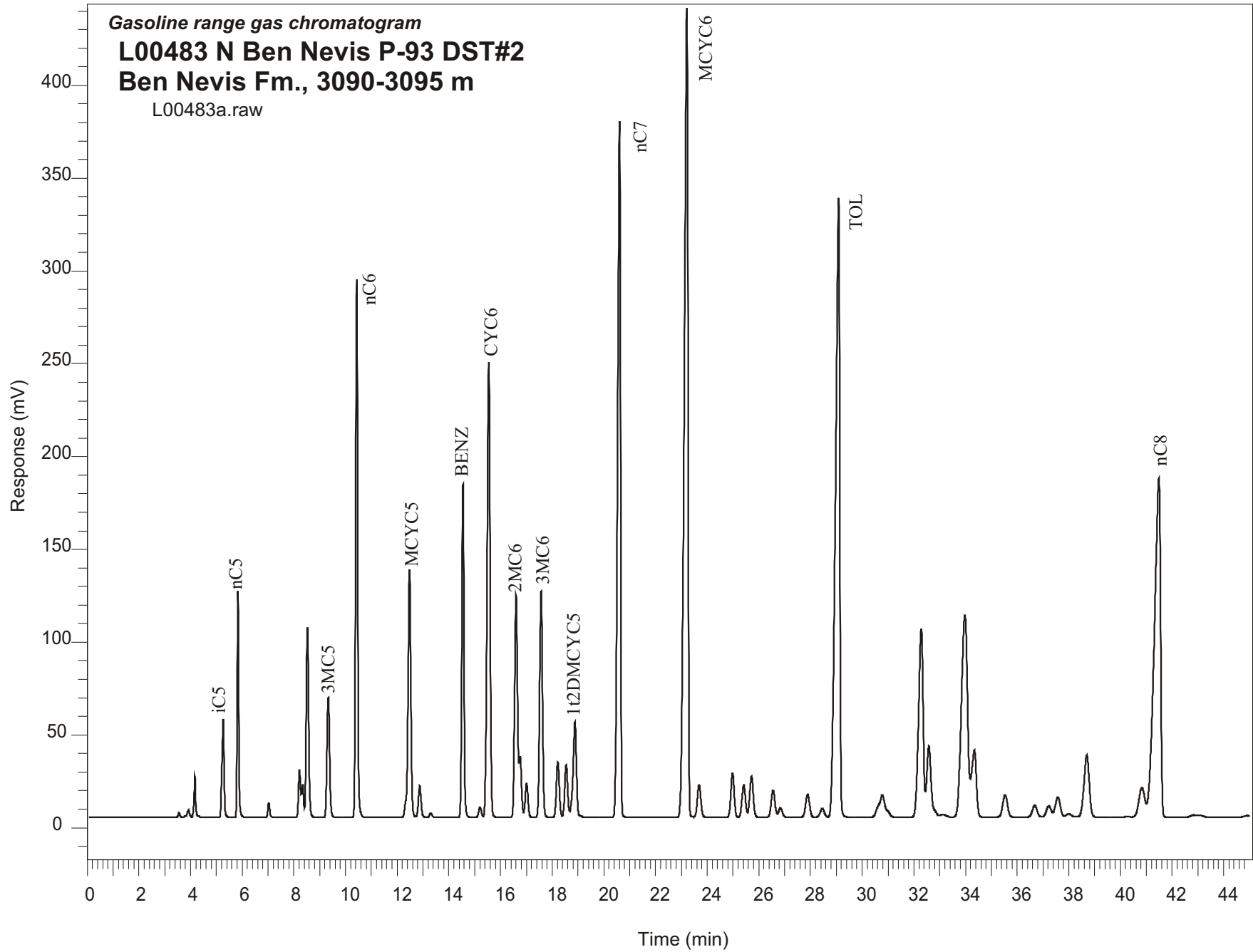


Gasoline range gas chromatogram
L00483 N Ben Nevis P-93 DST#2
Ben Nevis Fm., 3090-3095 m
L00483a.raw



Sample Name: #483 N. Ben Nevis P-93 DST #2

GASOLINE RANGE ANALYSIS DATA

ORGANIC GEOCHEMISTRY LAB GSC CALGARY

Ret Time [min]	Compound	Area	Height [uV]
5.27	iC5	312157	52726
5.83	nC5	504735	121745
7.03	22DMC4	40414	7937
8.22	CYC5	147759	25465
8.34	23DMC4	94126	17582
8.52	2MC5	685800	102185
9.33	3MC5	459877	64754
10.43	nC6	1571206	290303
12.48	MCYC5	1016598	133546
12.87	24DMC5	124699	17065
13.3	223TMC4	15842	2263
14.55	Benzene	1060836	179869
15.21	33DMC5	41261	5587
15.55	CYC6	2000655	245411
16.6	2MC6	921162	119815
16.76	23DMC5	208626	33013
17.01	11DMCYC5	139816	18522
17.57	3MC6	937039	122018
18.22	1c3DMCYC5	237179	29810
18.54	1t3DMCYC5	227652	28314
18.88	1t2DMCYC5	476240	51691
20.61	nC7	2850302	375458
23.21	MCYC6	4362492	435960
23.69	22DMC6	166444	17599
24.98	ECYC5	210790	23781
25.42	25DMC6	167277	17488
25.72	24DMC6	214020	22078
26.55	223TMC5	148610	14691
28.46	234TMC5	54031	4697
29.09	Toluene	3825236	333626
32.58	2MC7	464646	38258
34.34	3MC7	465405	36197
40.83	1c4DMCYC6	254949	15928
41.49	nC8	3087385	182609