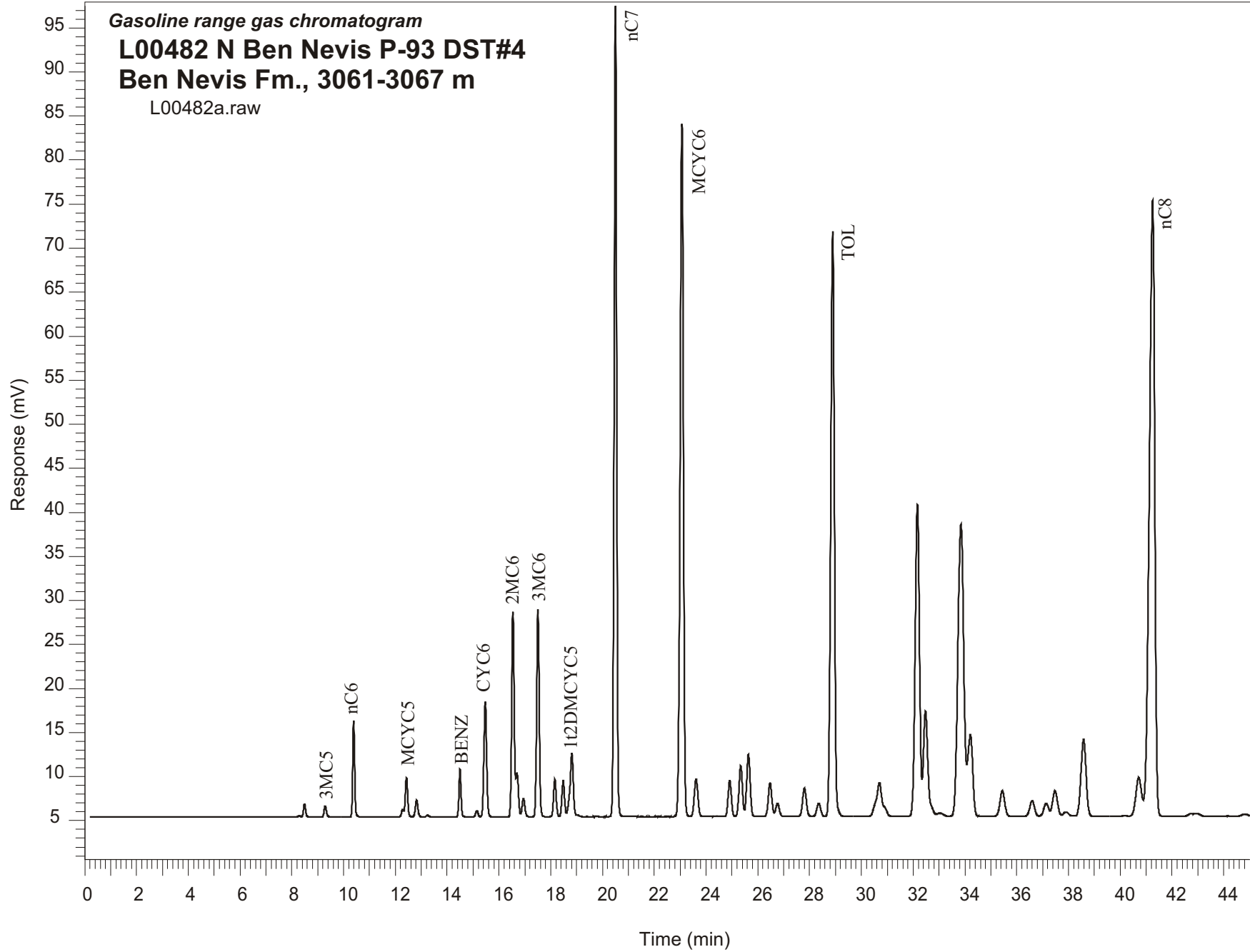


Gasoline range gas chromatogram
L00482 N Ben Nevis P-93 DST#4
Ben Nevis Fm., 3061-3067 m
L00482a.raw



Sample Name: #482 N. Ben Nevis P-93 DST #4

GASOLINE RANGE ANALYSIS DATA

ORGANIC GEOCHEMISTRY LAB GSC CALGARY

Ret Time [min]	Compound	Area	Height [uV]
5.17	iC5	113	31
8.29	23DMC4	817	132
8.49	2MC5	8480	1499
9.29	3MC5	7946	1269
10.39	nC6	55722	10962
12.28	22DMC5	4660	840
12.43	MCYC5	29087	4453
12.82	24DMC5	13512	1911
13.24	223TMC4	1484	217
14.49	Benzene	30834	5429
15.15	33DMC5	5105	723
15.47	CYC6	97168	13078
16.54	2MC6	161545	23285
16.69	23DMC5	32117	5030
16.95	11DMCYC5	15826	2086
17.51	3MC6	166483	23625
18.16	1c3DMCYC5	30909	4288
18.48	1t3DMCYC5	30085	4129
18.82	1t2DMCYC5	66721	7249
20.5	nC7	637437	92060
23.07	MCYC6	686283	78741
23.62	22DMC6	41656	4288
24.92	ECYC5	35482	4123
25.34	25DMC6	52545	5744
25.64	24DMC6	66096	7052
26.47	223TMC5	37364	3835
28.36	234TMC5	15715	1494
28.9	Toluene	637600	66388
32.17	2MC7	407769	35420
34.21	3MC7	121476	9250
40.72	1c4DMCYC6	67022	4393
41.25	nC8	1022718	69951