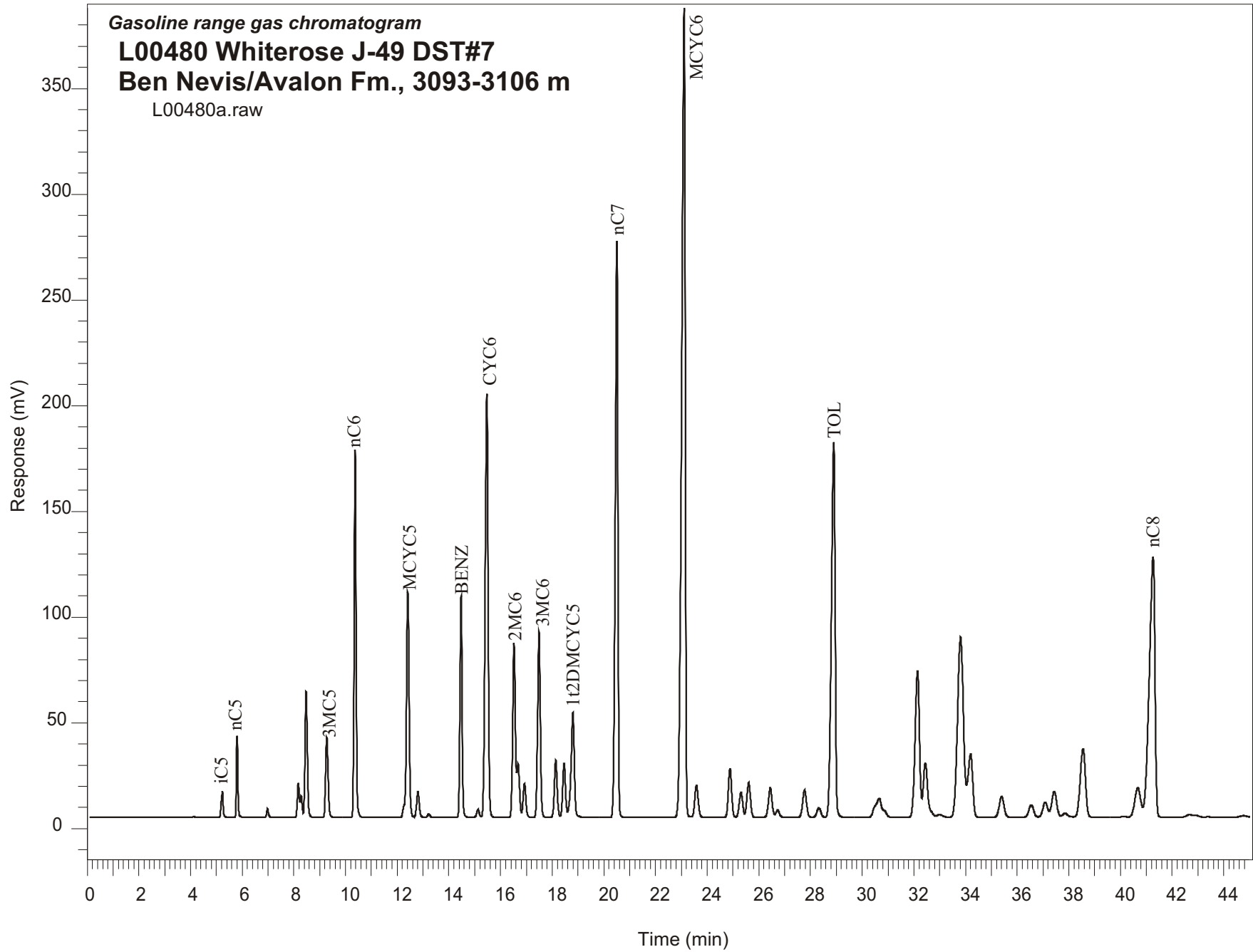


Gasoline range gas chromatogram  
**L00480 Whiterose J-49 DST#7**  
**Ben Nevis/Avalon Fm., 3093-3106 m**  
L00480a.raw



Sample Name: #480 Whiterose J-49 DST#4

-----  
GASOLINE RANGE ANALYSIS DATA  
-----

ORGANIC GEOCHEMISTRY LAB GSC CALGARY  
-----

Ret Time [min]	Compound	Area	Height [uV]
5.23	iC5	66405	12423
5.8	nC5	144612	38628
6.98	22DMC4	19978	4223
8.17	CYC5	85991	16318
8.28	23DMC4	55017	10406
8.47	2MC5	373066	59729
9.28	3MC5	255872	37895
10.37	nC6	901863	174054
12.41	MCYC5	764220	106741
12.8	24DMC5	87772	12133
13.22	223TMC4	11312	1682
14.47	Benzene	599836	104929
15.13	33DMC5	26694	3695
15.47	CYC6	1593561	200426
16.52	2MC6	599913	82354
16.68	23DMC5	171141	25626
16.93	11DMCYC5	120175	15947
17.49	3MC6	648209	88045
18.14	1c3DMCYC5	207729	27037
18.46	1t3DMCYC5	198480	25595
18.8	1t2DMCYC5	442121	49606
20.51	nC7	1960865	272536
23.11	MCYC6	3668583	382715
23.59	22DMC6	139182	15129
24.89	ECYC5	200629	23176
25.31	25DMC6	108978	11829
25.61	24DMC6	155045	16434
26.44	223TMC5	138070	13922
28.32	234TMC5	47439	4381
28.9	Toluene	1777482	177363
32.15	2MC7	818848	69133
34.2	3MC7	385318	30039
40.67	1c4DMCYC6	221815	14075
41.26	nC8	1900569	123188