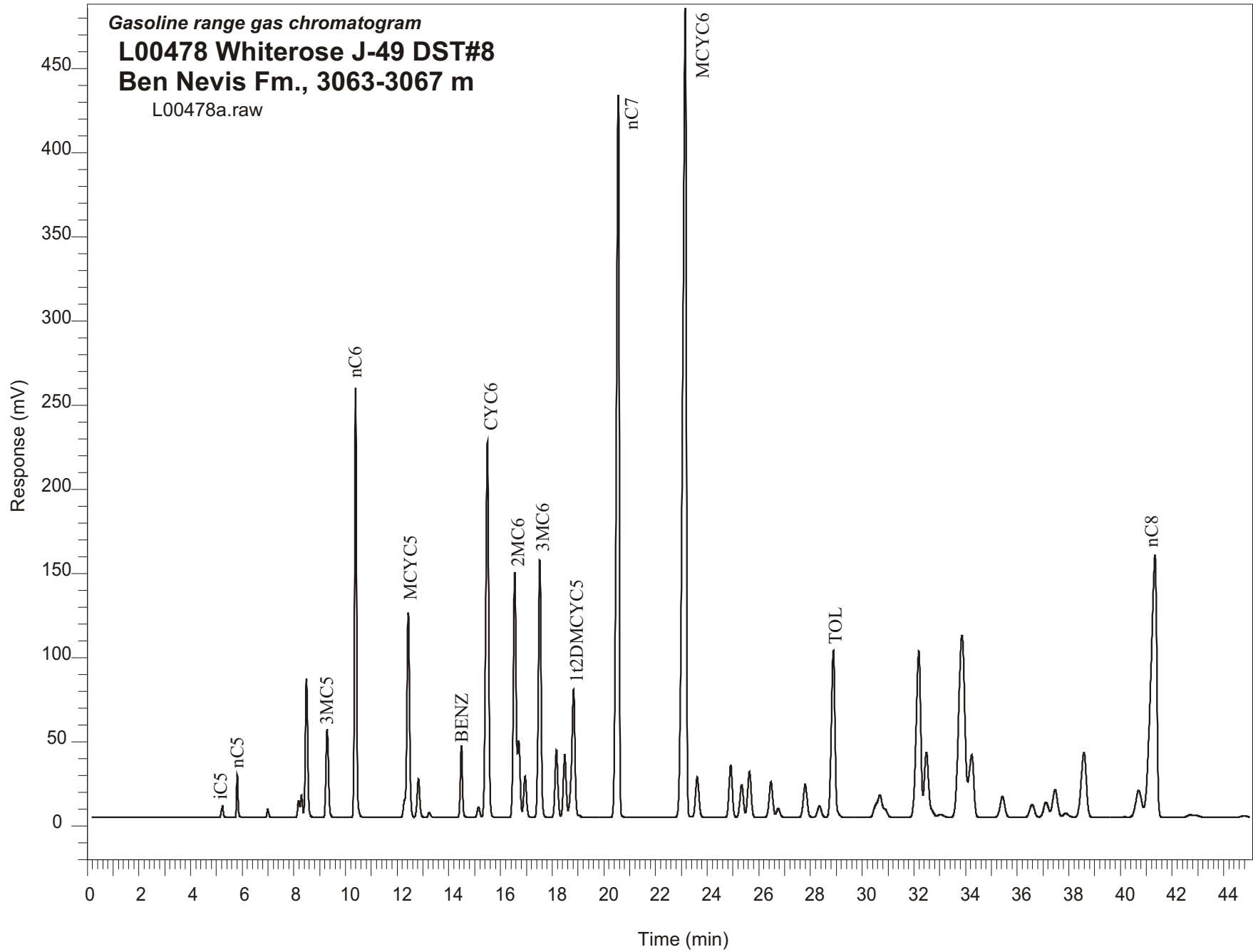


Gasoline range gas chromatogram
L00478 Whiterose J-49 DST#8
Ben Nevis Fm., 3063-3067 m
L00478a.raw



Sample Name: #478 Whiterose J-49 DST#8

GASOLINE RANGE ANALYSIS DATA

ORGANIC GEOCHEMISTRY LAB GSC CALGARY

Ret Time [min]	Compound	Area	Height [uV]
5.24	iC5	36946	6926
5.81	nC5	96205	25533
6.99	22DMC4	23435	4958
8.18	CYC5	50451	9939
8.3	23DMC4	73296	13198
8.49	2MC5	526762	82621
9.29	3MC5	358980	52565
10.39	nC6	1327020	255059
12.43	MCYC5	905841	121592
12.82	24DMC5	165320	22973
13.24	223TMC4	19165	2854
14.48	Benzene	244692	42747
15.15	33DMC5	45308	6211
15.49	CYC6	1795701	223218
16.55	2MC6	1092168	145399
16.7	23DMC5	295851	45629
16.95	11DMCYC5	182831	24482
17.52	3MC6	1143650	152848
18.16	1c3DMCYC5	312389	40215
18.49	1t3DMCYC5	293667	37421
18.83	1t2DMCYC5	687376	75978
20.56	nC7	3288771	429296
23.15	MCYC6	4770637	480499
23.61	22DMC6	216244	23981
24.91	ECYC5	270402	31218
25.34	25DMC6	178462	19270
25.64	24DMC6	254089	27061
26.47	223TMC5	208296	21110
28.35	234TMC5	72489	6775
28.89	Toluene	972250	99034
32.19	2MC7	1198343	98706
34.24	3MC7	481153	37249
40.7	1c4DMCYC6	256620	16034
41.34	nC8	2521862	155807