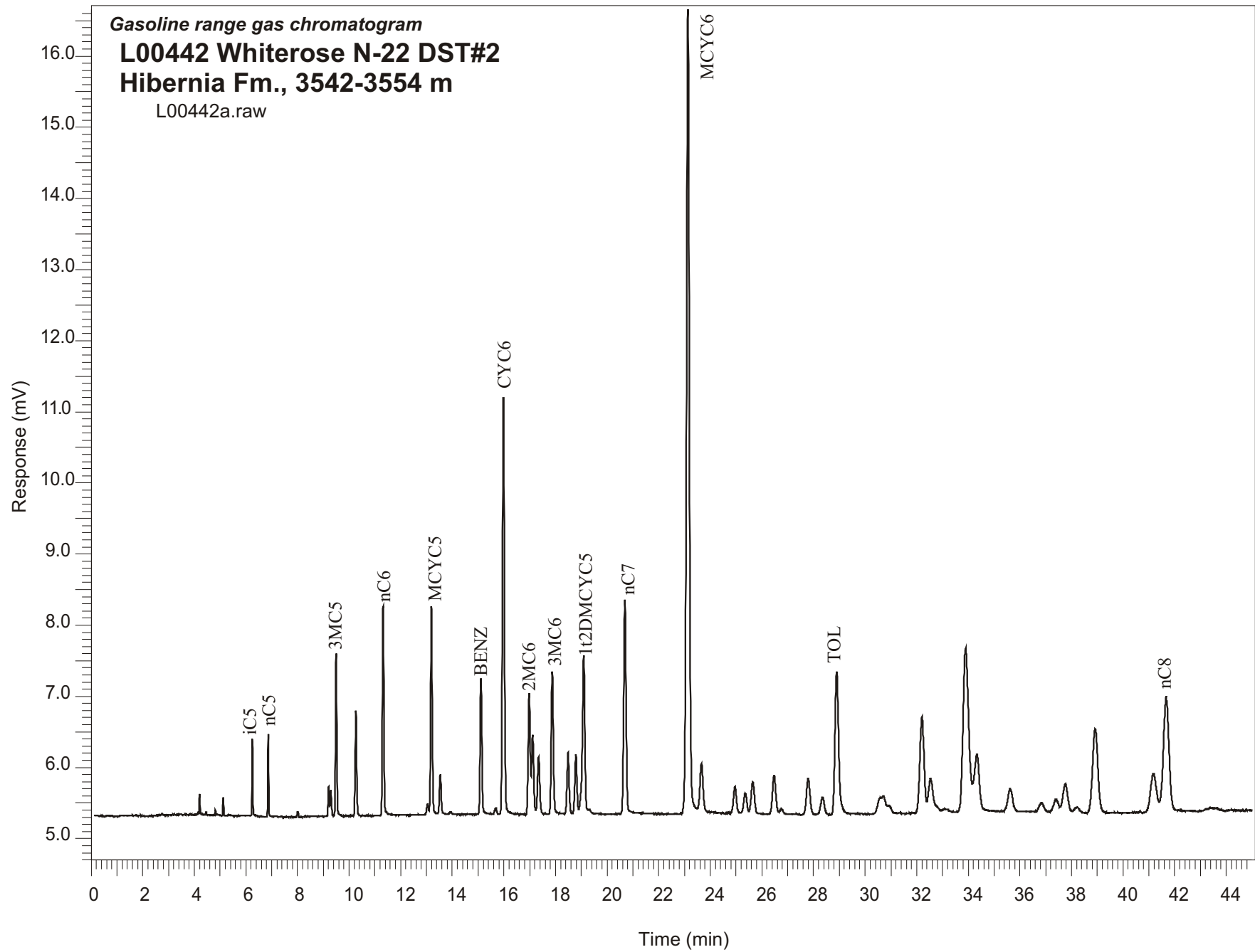


Gasoline range gas chromatogram
L00442 Whiterose N-22 DST#2
Hibernia Fm., 3542-3554 m
L00442a.raw



Sample Name: #442 Whiterose N-22 3542-3554m

GASOLINE RANGE ANALYSIS DATA

ORGANIC GEOCHEMISTRY LAB GSC CALGARY

Ret Time [min]	Compound	Area	Height [uV]
6.25	iC5	2413	1085
6.86	nC5	2747	1160
8.01	22DMC4	266	81
9.21	CYC5	1354	419
9.29	23DMC4	1283	363
9.5	2MC5	7958	2289
10.27	3MC5	5610	1483
11.32	nC6	11286	2931
13.04	22DMC5	681	150
13.19	MCYC5	13186	2922
13.54	24DMC5	2562	545
13.93	223TMC4	154	30
15.11	Benzene	8935	1900
15.68	33DMC5	485	89
15.98	CYC6	31000	5862
16.98	2MC6	9270	1705
17.11	23DMC5	6394	1118
17.35	11DMCYC5	4725	796
17.88	3MC6	11449	1998
18.49	1c3DMCYC5	4982	861
18.79	1t3DMCYC5	4733	822
19.09	1t2DMCYC5	14558	2186
20.69	nC7	18648	3001
23.13	MCYC6	88562	11298
23.66	22DMC6	5781	676
24.96	ECYC5	2887	368
25.36	25DMC6	2299	273
25.65	24DMC6	3720	437
26.47	223TMC5	4889	538
28.35	234TMC5	2293	233
28.9	Toluene	19461	1996
32.2	2MC7	15208	1340
34.34	3MC7	10627	779
41.18	1c4DMCYC6	8568	538
41.67	nC8	24375	1621