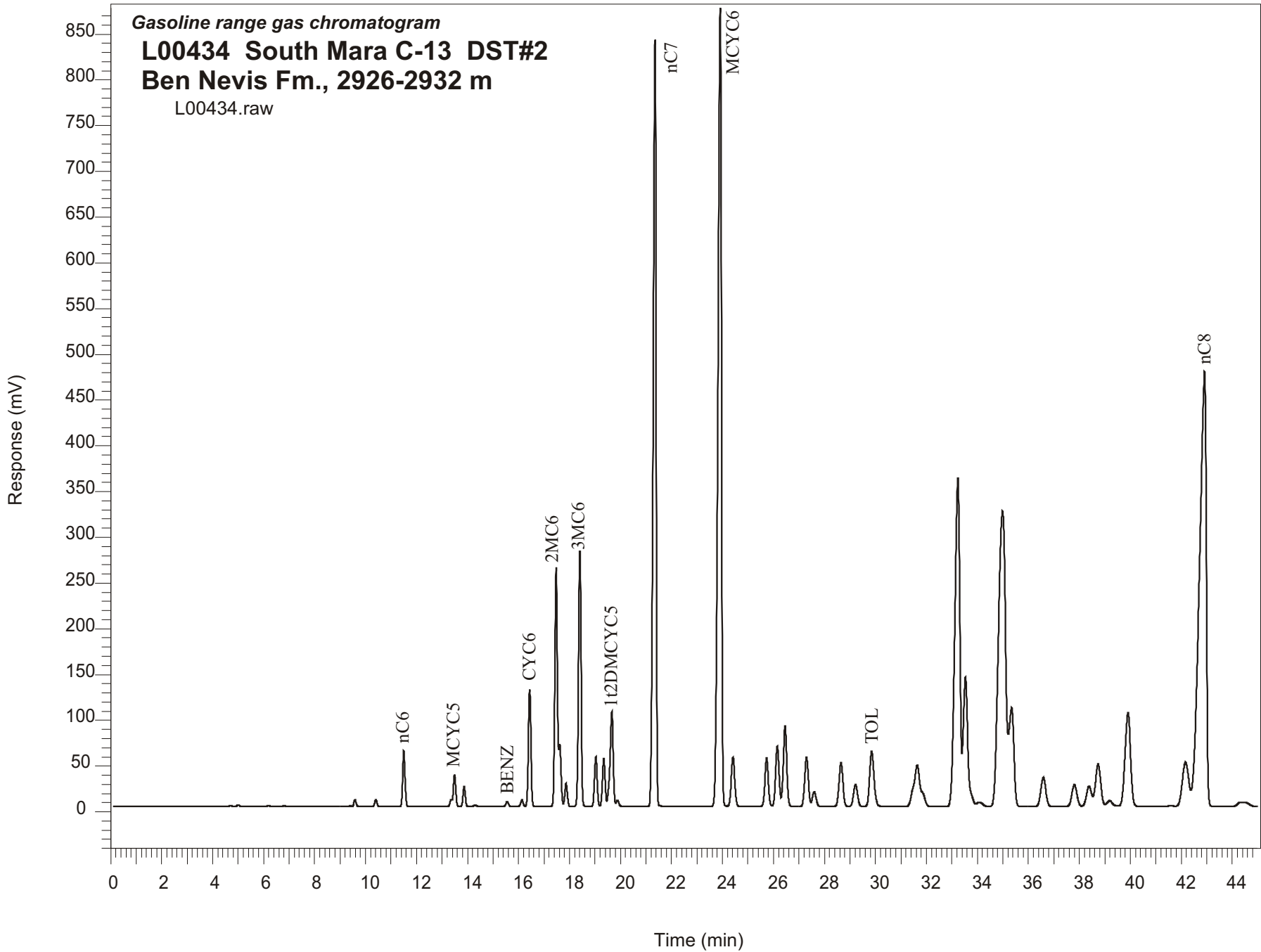


Gasoline range gas chromatogram  
**L00434 South Mara C-13 DST#2**  
**Ben Nevis Fm., 2926-2932 m**  
L00434.raw



Sample Name: #434 SOUTH MARA C-13 9600-9619m

-----  
GASOLINE RANGE ANALYSIS DATA  
-----

ORGANIC GEOCHEMISTRY LAB GSC CALGARY  
-----

Ret Time [min]	Compound	Area	Height [uV]
6.2	iC5	6502	949
6.8	nC5	5455	972
9.39	CYC5	5056	580
10.4	3MC5	46038	7390
11.5	nC6	395032	61342
13.36	22DMC5	39473	7741
13.49	MCYC5	237549	34847
13.87	24DMC5	140268	21760
14.3	223TMC4	11121	1672
15.56	Benzene	38384	5223
16.13	33DMC5	49037	7180
16.44	CYC6	890766	127687
17.48	2MC6	1890573	261845
17.62	23DMC5	389163	68380
17.86	11DMCYC5	177872	25141
18.41	3MC6	1970439	278940
19.03	1c3DMCYC5	387765	54277
19.34	1t3DMCYC5	379670	52463
19.66	1t2DMCYC5	895869	103691
21.35	nC7	6596786	837964
23.91	MCYC6	8104959	872213
24.41	22DMC6	512782	53832
25.73	ECYC5	480222	52678
26.15	25DMC6	627051	65858
26.46	24DMC6	840220	87739
27.3	223TMC5	534625	53451
29.22	234TMC5	263379	24015
29.85	Toluene	717294	60308
33.23	2MC7	4946443	359022
35.34	3MC7	1450305	108328
42.17	1c4DMCYC6	848163	48477
42.91	nC8	8931988	475883