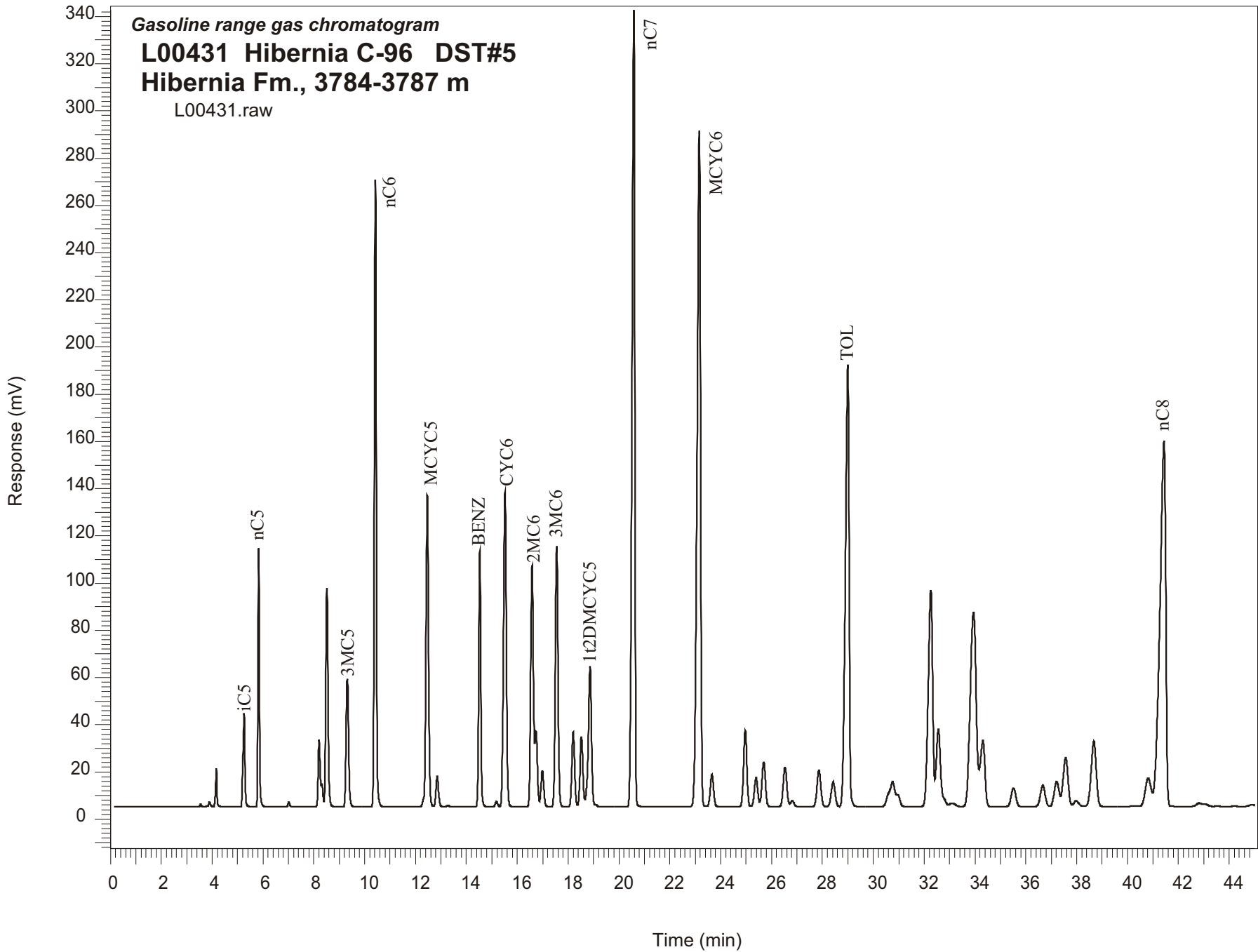


Gasoline range gas chromatogram
L00431 Hibernia C-96 DST#5
Hibernia Fm., 3784-3787 m
L00431.raw



Sample Name: #431 Hibernia C-96 DST#5

GASOLINE RANGE ANALYSIS DATA

ORGANIC GEOCHEMISTRY LAB GSC CALGARY

Ret Time [min]	Compound	Area	Height [uV]
5.26	iC5	217948	39604
5.83	nC5	425495	109750
7.02	22DMC4	9776	2063
8.21	CYC5	161537	28562
8.32	23DMC4	42704	9705
8.51	2MC5	589828	92757
9.32	3MC5	371161	54375
10.42	nC6	1395955	265972
12.46	MCYC5	935321	131926
12.85	24DMC5	93595	13010
13.28	223TMC4	3872	560
14.53	Benzene	620911	108310
15.18	33DMC5	15558	2185
15.52	CYC6	1067498	133333
16.58	2MC6	763939	102193
16.74	23DMC5	209765	31945
16.99	11DMCYC5	116921	15581
17.55	3MC6	826043	110247
18.2	1c3DMCYC5	246296	31667
18.52	1t3DMCYC5	234465	29853
18.86	1t2DMCYC5	528831	59487
20.58	nC7	2501670	337615
23.16	MCYC6	2715629	286416
23.66	22DMC6	123769	13639
24.97	ECYC5	286307	32351
25.39	25DMC6	115803	12300
25.69	24DMC6	182599	19061
26.53	223TMC5	168673	16857
28.42	234TMC5	114244	10479
29	Toluene	1893534	187099
32.26	2MC7	1111274	91859
34.31	3MC7	359739	28010
40.82	1c4DMCYC6	192917	12008
41.43	nC8	2510699	154759