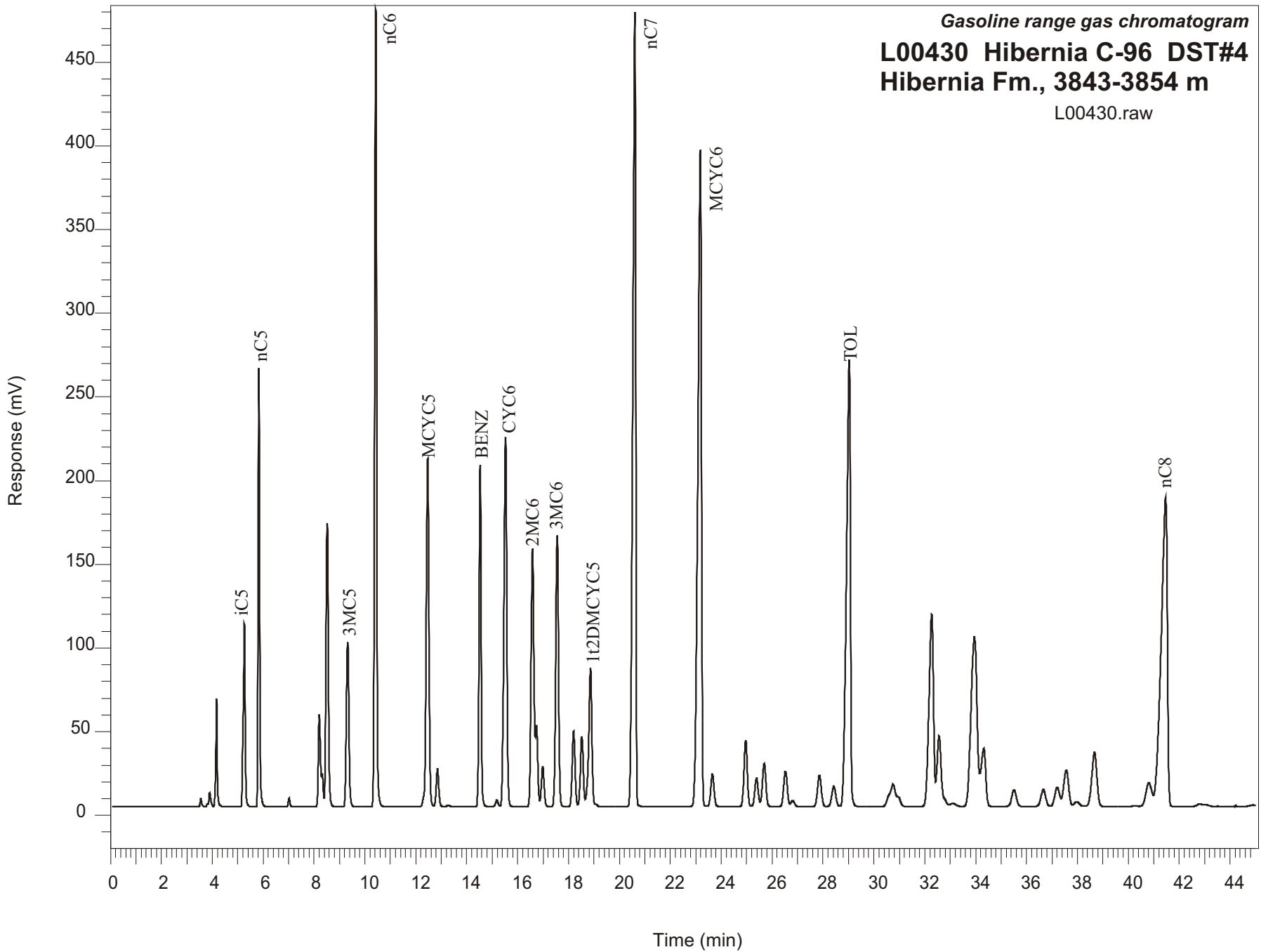


Gasoline range gas chromatogram
L00430 Hibernia C-96 DST#4
Hibernia Fm., 3843-3854 m
L00430.raw



Sample Name: #430 Hibernia C-96 DST#4

GASOLINE RANGE ANALYSIS DATA

ORGANIC GEOCHEMISTRY LAB GSC CALGARY

Ret Time [min]	Compound	Area	Height [uV]
5.27	iC5	595344	109407
5.83	nC5	1081315	262659
7.02	22DMC4	23770	5069
8.21	CYC5	331100	55063
8.32	23DMC4	83865	19486
8.52	2MC5	1136402	169338
9.32	3MC5	688973	98356
10.43	nC6	2569370	476686
12.46	MCYC5	1545294	208177
12.85	24DMC5	160745	22597
13.28	223TMC4	6732	1019
14.53	Benzene	1181852	204120
15.18	33DMC5	27723	3863
15.53	CYC6	1786101	221086
16.59	2MC6	1199844	154429
16.74	23DMC5	304608	48242
16.99	11DMCYC5	179923	24365
17.56	3MC6	1245341	161978
18.2	1c3DMCYC5	356478	45146
18.52	1t3DMCYC5	337976	42165
18.87	1t2DMCYC5	736219	82767
20.61	nC7	3724759	474812
23.18	MCYC6	3862230	392052
23.65	22DMC6	173381	19375
24.96	ECYC5	350898	39502
25.39	25DMC6	160872	16997
25.69	24DMC6	245876	25726
26.53	223TMC5	213058	21309
28.42	234TMC5	135874	12124
29.03	Toluene	2882541	266877
32.27	2MC7	1415493	114853
34.32	3MC7	442295	34855
40.81	1c4DMCYC6	226977	14067
41.46	nC8	3132417	184506