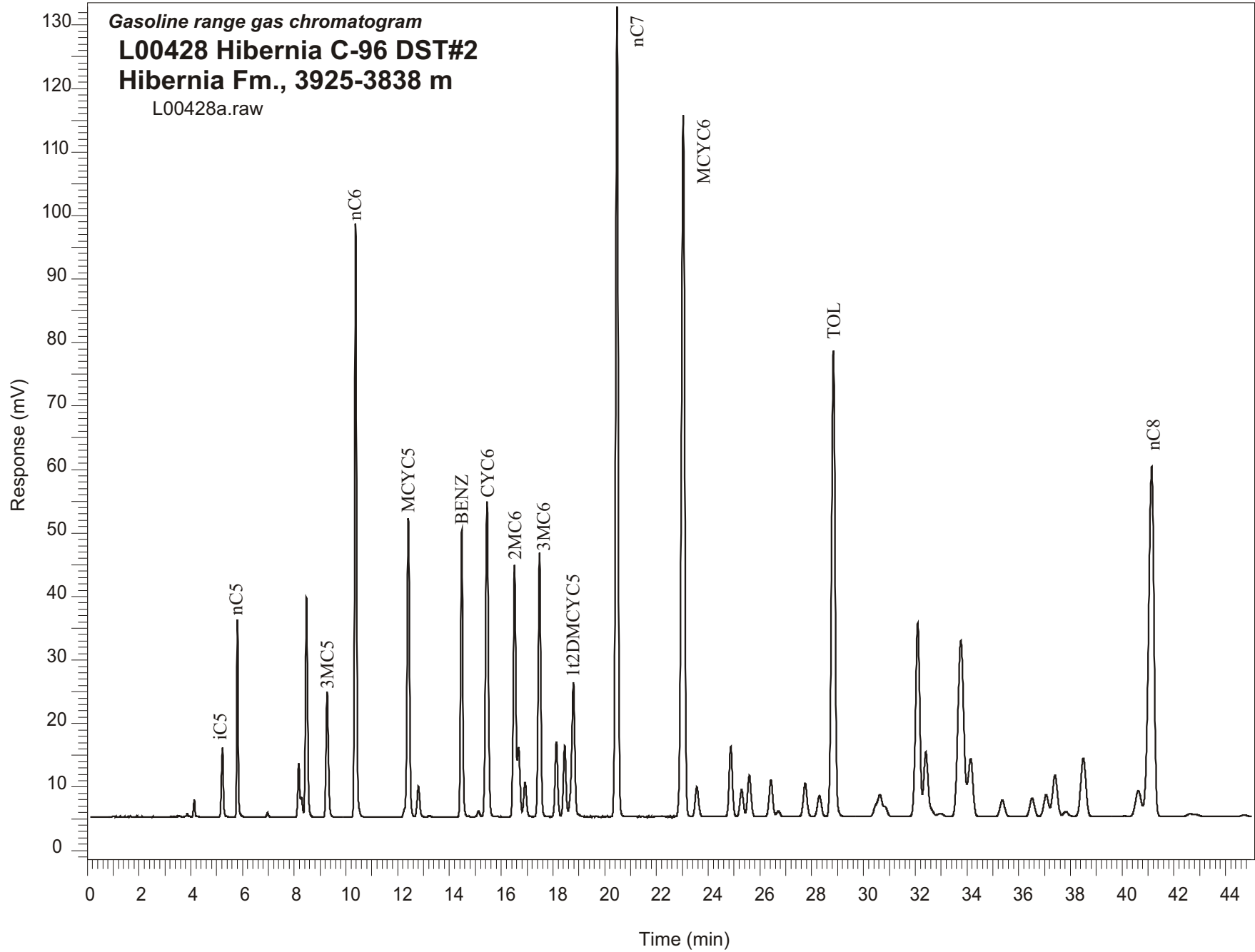


Gasoline range gas chromatogram
L00428 Hibernia C-96 DST#2
Hibernia Fm., 3925-3838 m
L00428a.raw



Sample Name: #428 Hibernia C-96 DST#2

GASOLINE RANGE ANALYSIS DATA

ORGANIC GEOCHEMISTRY LAB GSC CALGARY

Ret Time [min]	Compound	Area	Height [uV]
5.23	iC5	56894	10905
5.8	nC5	111905	31065
6.97	22DMC4	3466	728
8.17	CYC5	44019	8539
8.28	23DMC4	15471	3212
8.47	2MC5	199360	34659
9.27	3MC5	125552	19810
10.37	nC6	479078	93531
12.41	MCYC5	306749	46979
12.8	24DMC5	34925	4864
13.22	223TMC4	1446	219
14.47	Benzene	258894	45179
15.12	33DMC5	6114	862
15.45	CYC6	371377	49740
16.52	2MC6	275203	39634
16.67	23DMC5	73245	11049
16.92	11DMCYC5	41168	5421
17.48	3MC6	291448	41560
18.13	1c3DMCYC5	85484	11838
18.45	1t3DMCYC5	81117	11172
18.79	1t2DMCYC5	182815	21143
20.48	nC7	887607	127561
23.03	MCYC6	967538	110509
23.56	22DMC6	42976	4682
24.87	ECYC5	95851	11041
25.29	25DMC6	39324	4270
25.59	24DMC6	61003	6528
26.42	223TMC5	56808	5855
28.3	234TMC5	34957	3322
28.84	Toluene	704627	73381
32.1	2MC7	349792	30575
34.14	3MC7	118235	9137
40.63	1c4DMCYC6	62693	4086
41.14	nC8	794715	55086