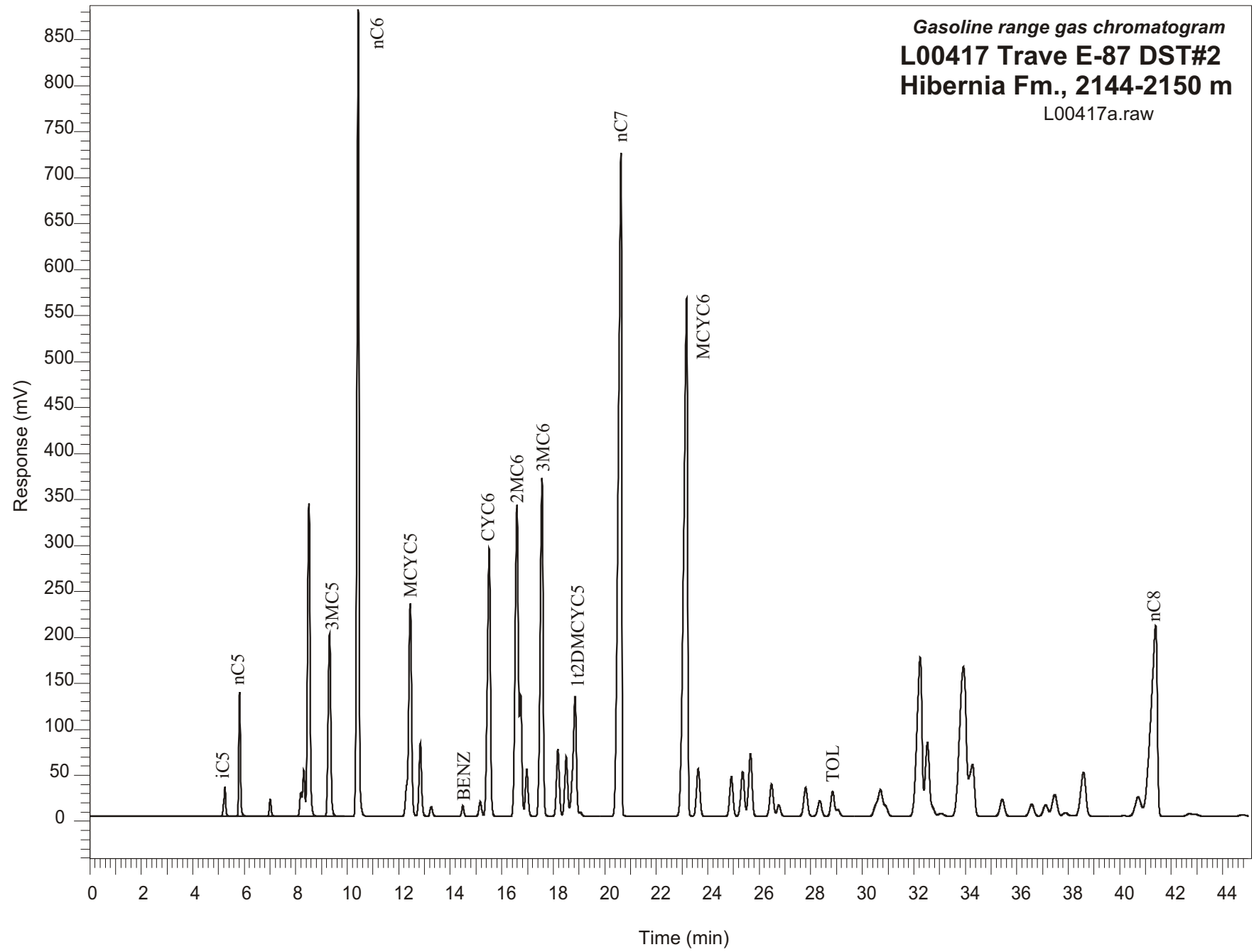


Gasoline range gas chromatogram
L00417 Trave E-87 DST#2
Hibernia Fm., 2144-2150 m
L00417a.raw



Sample Name: #417 Trave E-87 DST #2

GASOLINE RANGE ANALYSIS DATA

ORGANIC GEOCHEMISTRY LAB GSC CALGARY

Ret Time [min]	Compound	Area	Height [uV]
5.25	iC5	173523	32020
5.82	nC5	586070	134839
7.01	22DMC4	93112	19018
8.19	CYC5	141148	25755
8.32	23DMC4	284543	50242
8.51	2MC5	2349231	340482
9.31	3MC5	1408534	198874
10.42	nC6	4849728	877945
12.44	MCYC5	1919588	231047
12.84	24DMC5	551828	79616
13.26	223TMC4	72024	10668
14.49	Benzene	70388	12121
15.16	33DMC5	119681	16163
15.51	CYC6	2434392	291453
16.59	2MC6	2878568	339015
16.73	23DMC5	790800	132017
16.97	11DMCYC5	374037	51411
17.56	3MC6	2900670	367892
18.18	1c3DMCYC5	576146	72989
18.5	1t3DMCYC5	524848	65086
18.85	1t2DMCYC5	1223462	130332
20.63	nC7	6478949	724058
23.18	MCYC6	5897878	563534
23.63	22DMC6	470488	52036
24.92	ECYC5	381597	43394
25.36	25DMC6	460481	48135
25.66	24DMC6	635676	67674
26.48	223TMC5	347202	35324
28.35	234TMC5	178069	16893
28.85	Toluene	268284	27282
32.25	2MC7	2334357	173110
34.28	3MC7	749729	56112
40.72	1c4DMCYC6	344191	21013
41.4	nC8	3627299	207583