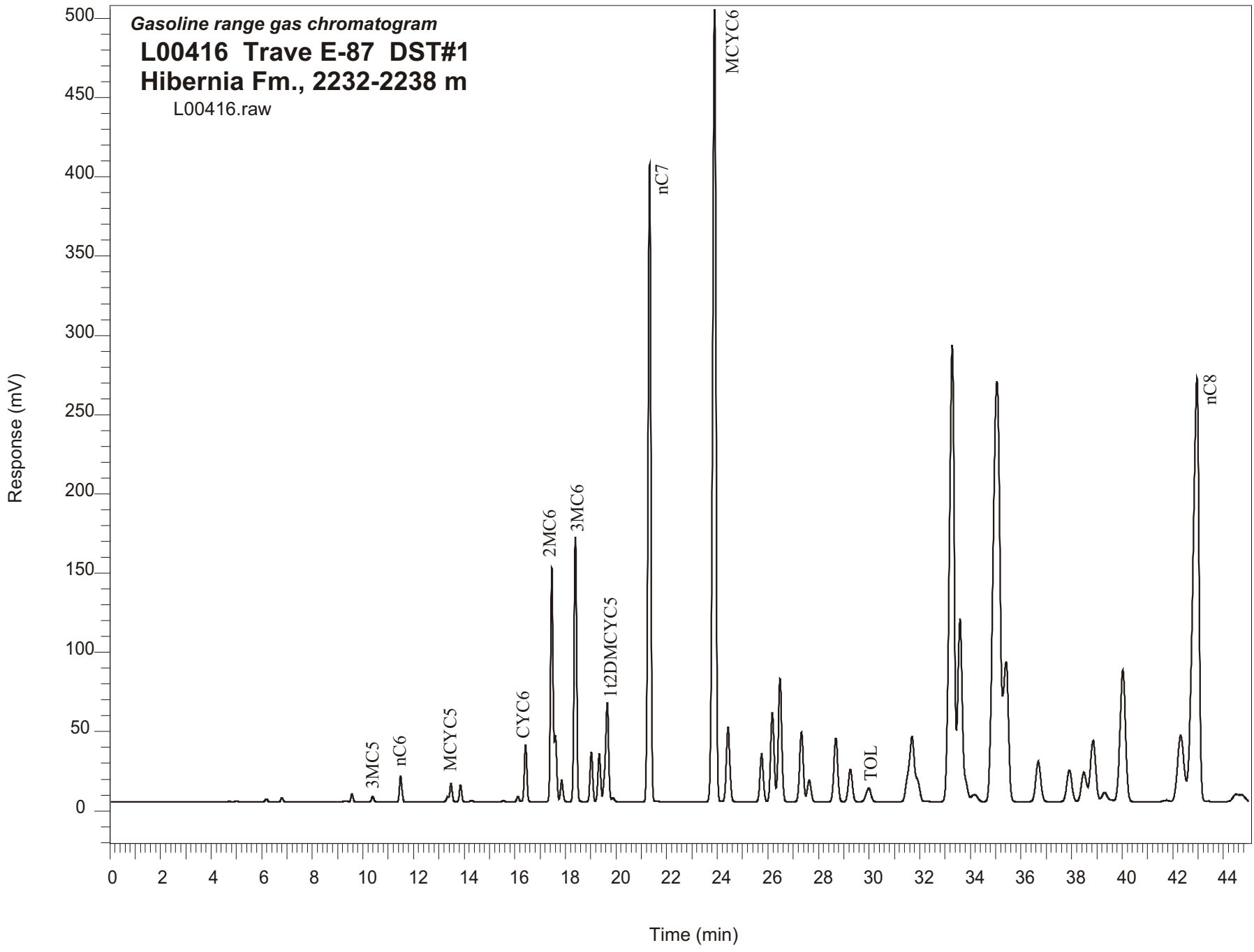


Gasoline range gas chromatogram
L00416 Trave E-87 DST#1
Hibernia Fm., 2232-2238 m
L00416.raw



Sample Name: #416 TRAVE E-87

GASOLINE RANGE ANALYSIS DATA

ORGANIC GEOCHEMISTRY LAB GSC CALGARY

Ret Time [min]	Compound	Area	Height [uV]
6.18	iC5	12586	1813
6.79	nC5	16018	2719
8.05	22DMC4	878	168
9.26	CYC5	2736	493
9.37	23DMC4	3642	535
9.56	2MC5	31865	5222
10.38	3MC5	22802	3632
11.49	nC6	111800	16652
13.34	22DMC5	16901	3132
13.48	MCYC5	79811	11501
13.86	24DMC5	69475	10705
14.29	223TMC4	5667	843
15.56	Benzene	4957	672
16.12	33DMC5	22304	3275
16.43	CYC6	248961	35541
17.46	2MC6	1060727	147639
17.6	23DMC5	246574	41957
17.85	11DMCYC5	97497	13669
18.39	3MC6	1186202	166957
19.02	1c3DMCYC5	225158	31374
19.34	1t3DMCYC5	221125	30519
19.65	1t2DMCYC5	554871	62394
21.33	nC7	3102143	402131
23.89	MCYC6	4540574	499620
24.43	22DMC6	455005	46961
25.75	ECYC5	281754	30220
26.18	25DMC6	544424	56250
26.48	24DMC6	752981	77885
27.33	223TMC5	443243	43914
29.26	234TMC5	225189	20431
29.98	Toluene	119649	8625
33.28	2MC7	3877009	288083
35.42	3MC7	1223974	88710
42.31	1c4DMCYC6	742474	42047
42.95	nC8	4527069	267523