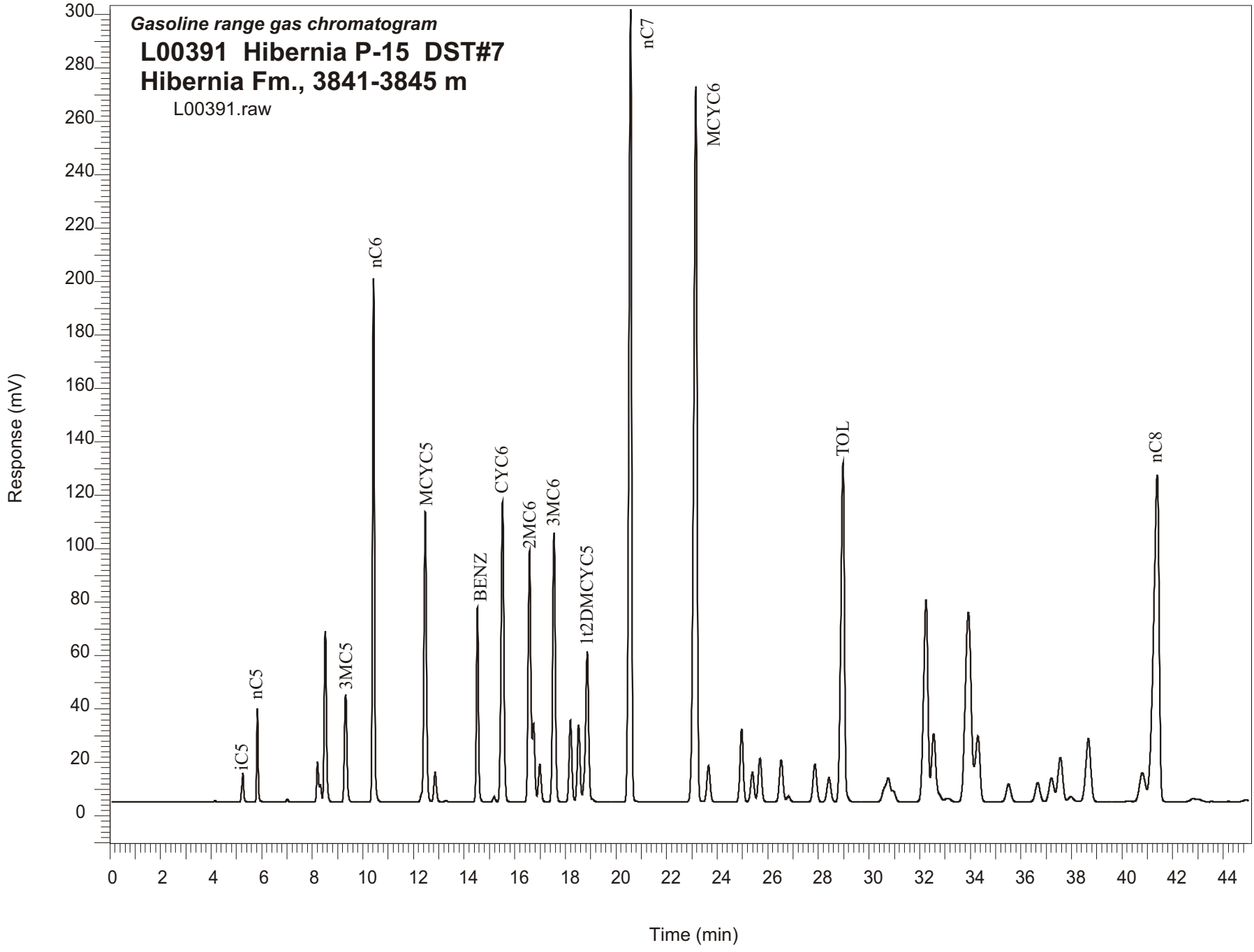


Gasoline range gas chromatogram
L00391 Hibernia P-15 DST#7
Hibernia Fm., 3841-3845 m
L00391.raw



Sample Name: #391 Hibernia P-15

GASOLINE RANGE ANALYSIS DATA

ORGANIC GEOCHEMISTRY LAB GSC CALGARY

Ret Time [min]	Compound	Area	Height [uV]
5.26	iC5	58033	10844
5.83	nC5	135955	35194
7.01	22DMC4	5366	1149
8.21	CYC5	84186	15156
8.32	23DMC4	30892	6459
8.51	2MC5	405788	63924
9.32	3MC5	274839	40278
10.42	nC6	1030278	196030
12.46	MCYC5	761355	108754
12.85	24DMC5	80825	11196
13.28	223TMC4	3755	541
14.53	Benzene	418060	72825
15.18	33DMC5	13558	1904
15.52	CYC6	888558	112415
16.59	2MC6	690666	93994
16.74	23DMC5	194619	29319
16.99	11DMCYC5	107091	14285
17.55	3MC6	746514	100788
18.2	1c3DMCYC5	234268	30538
18.53	1t3DMCYC5	224191	28884
18.87	1t2DMCYC5	497742	56368
20.58	nC7	2172575	296810
23.16	MCYC6	2507037	267688
23.66	22DMC6	120448	13451
24.97	ECYC5	239595	27383
25.39	25DMC6	103551	11102
25.69	24DMC6	156065	16423
26.53	223TMC5	157359	15840
28.42	234TMC5	97264	9033
28.97	Toluene	1253604	127040
32.25	2MC7	900593	75645
34.3	3MC7	316331	24605
40.8	1c4DMCYC6	173445	10885
41.39	nC8	1894572	122310