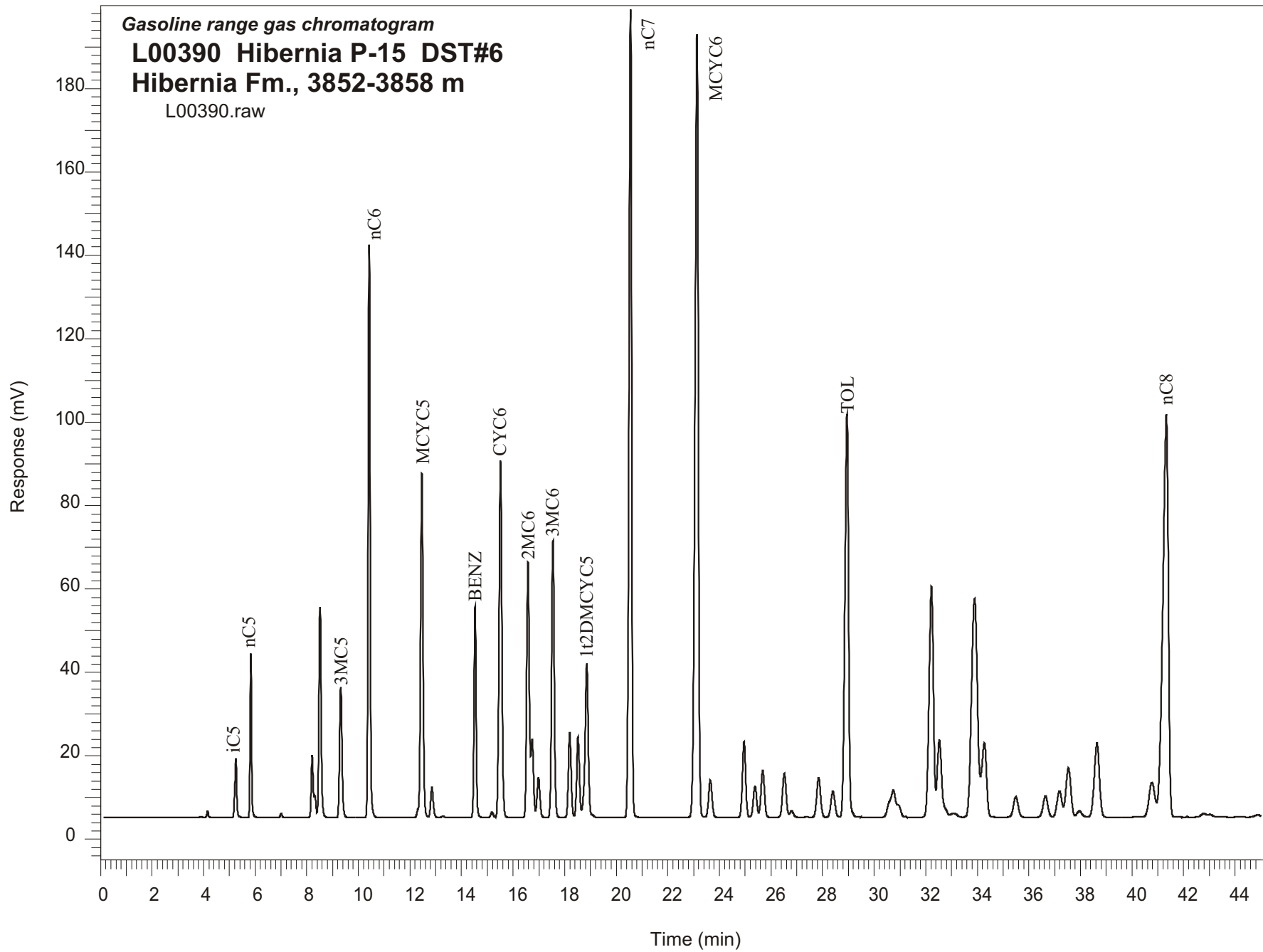


Gasoline range gas chromatogram
L00390 Hibernia P-15 DST#6
Hibernia Fm., 3852-3858 m
L00390.raw



Sample Name: #390 Hibernia P-15 DST#6

GASOLINE RANGE ANALYSIS DATA

ORGANIC GEOCHEMISTRY LAB GSC CALGARY

Ret Time [min]	Compound	Area	Height [uV]
5.25	iC5	75234	14234
5.83	nC5	152434	39352
7.01	22DMC4	4824	986
8.21	CYC5	81290	14987
8.31	23DMC4	23978	5308
8.51	2MC5	309103	50572
9.32	3MC5	205712	31298
10.42	nC6	722226	137224
12.46	MCYC5	561111	82695
12.85	24DMC5	52874	7291
13.28	223TMC4	2315	351
14.53	Benzene	293956	50586
15.18	33DMC5	9261	1291
15.51	CYC6	664044	85556
16.58	2MC6	436217	61361
16.74	23DMC5	127339	18702
16.98	11DMCYC5	74152	9752
17.55	3MC6	478579	66463
18.2	1c3DMCYC5	152513	20342
18.52	1t3DMCYC5	146639	19359
18.86	1t2DMCYC5	326030	36870
20.56	nC7	1385226	193643
23.13	MCYC6	1719962	187704
23.65	22DMC6	82407	8927
24.96	ECYC5	157296	18104
25.38	25DMC6	69983	7491
25.68	24DMC6	106309	11196
26.52	223TMC5	105059	10544
28.4	234TMC5	68356	6334
28.95	Toluene	942531	96642
32.22	2MC7	646003	55344
34.27	3MC7	230597	17820
40.77	1c4DMCYC6	131329	8377
41.33	nC8	1449538	96602