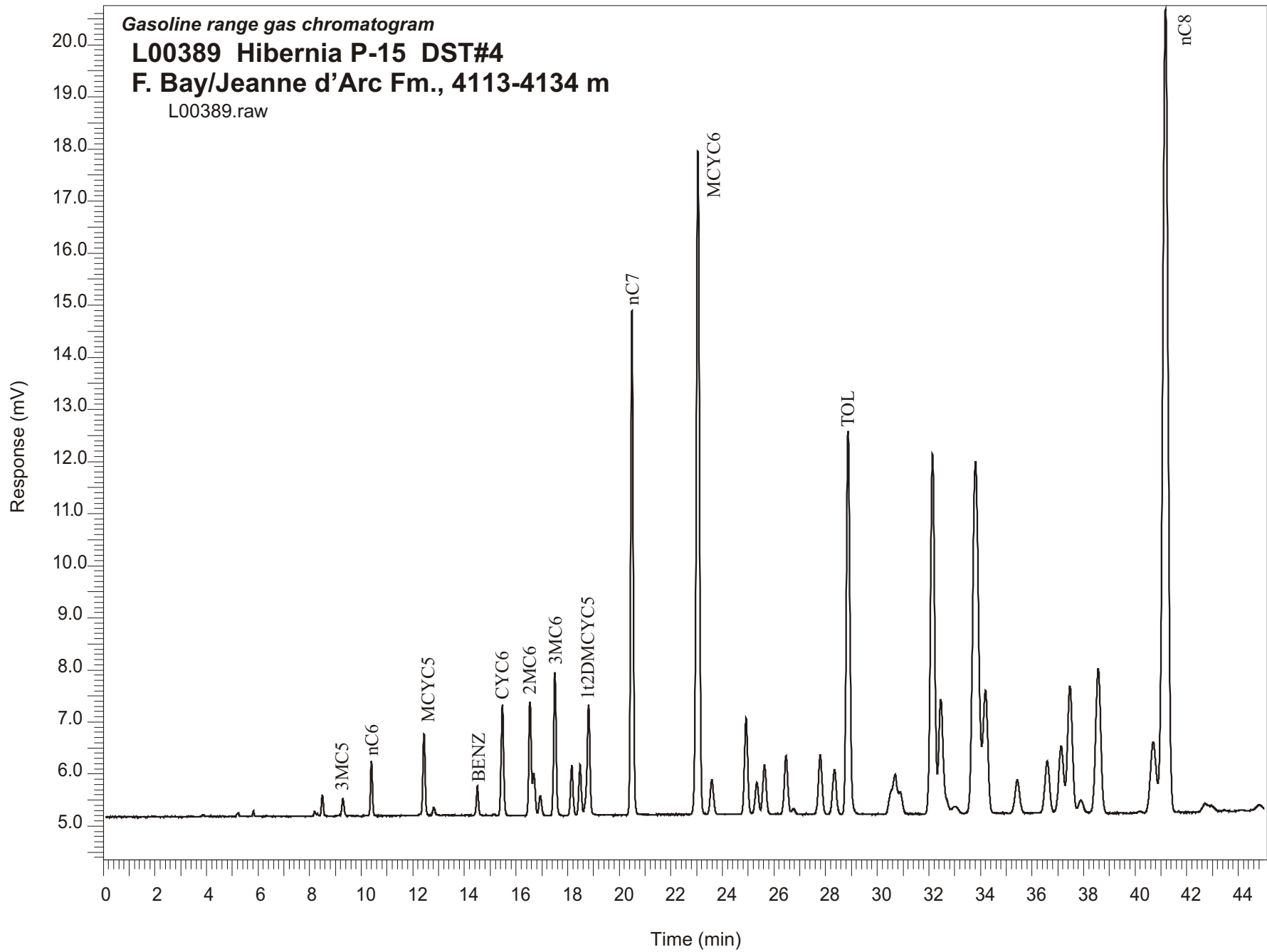


Gasoline range gas chromatogram  
**L00389 Hibernia P-15 DST#4**  
**F. Bay/Jeanne d'Arc Fm., 4113-4134 m**  
L00389.raw



Sample Name: #389 Hibernia P-15 DST#4

-----  
GASOLINE RANGE ANALYSIS DATA  
-----

ORGANIC GEOCHEMISTRY LAB GSC CALGARY  
-----

Ret Time [min]	Compound	Area	Height [uV]
5.23	iC5	431	72
5.82	nC5	351	110
8.19	CYC5	466	97
8.3	23DMC4	217	43
8.49	2MC5	2148	410
9.29	3MC5	1751	323
10.39	nC6	5225	1046
12.43	MCYC5	9349	1552
12.81	24DMC5	976	149
14.5	Benzene	3096	553
15.47	CYC6	14684	2128
16.54	2MC6	14796	2184
16.69	23DMC5	5258	808
16.94	11DMCYC5	2713	373
17.51	3MC6	18899	2749
18.16	1c3DMCYC5	6605	960
18.48	1t3DMCYC5	6683	967
18.81	1t2DMCYC5	16733	2111
20.49	nC7	66772	9685
23.05	MCYC6	108524	12732
23.59	22DMC6	5848	658
24.92	ECYC5	15871	1845
25.33	25DMC6	5494	607
25.63	24DMC6	8710	941
26.46	223TMC5	10679	1119
28.34	234TMC5	8789	854
28.87	Toluene	70369	7350
32.15	2MC7	77483	6889
34.2	3MC7	30536	2358
40.7	1c4DMCYC6	20454	1341
41.18	nC8	220627	15402