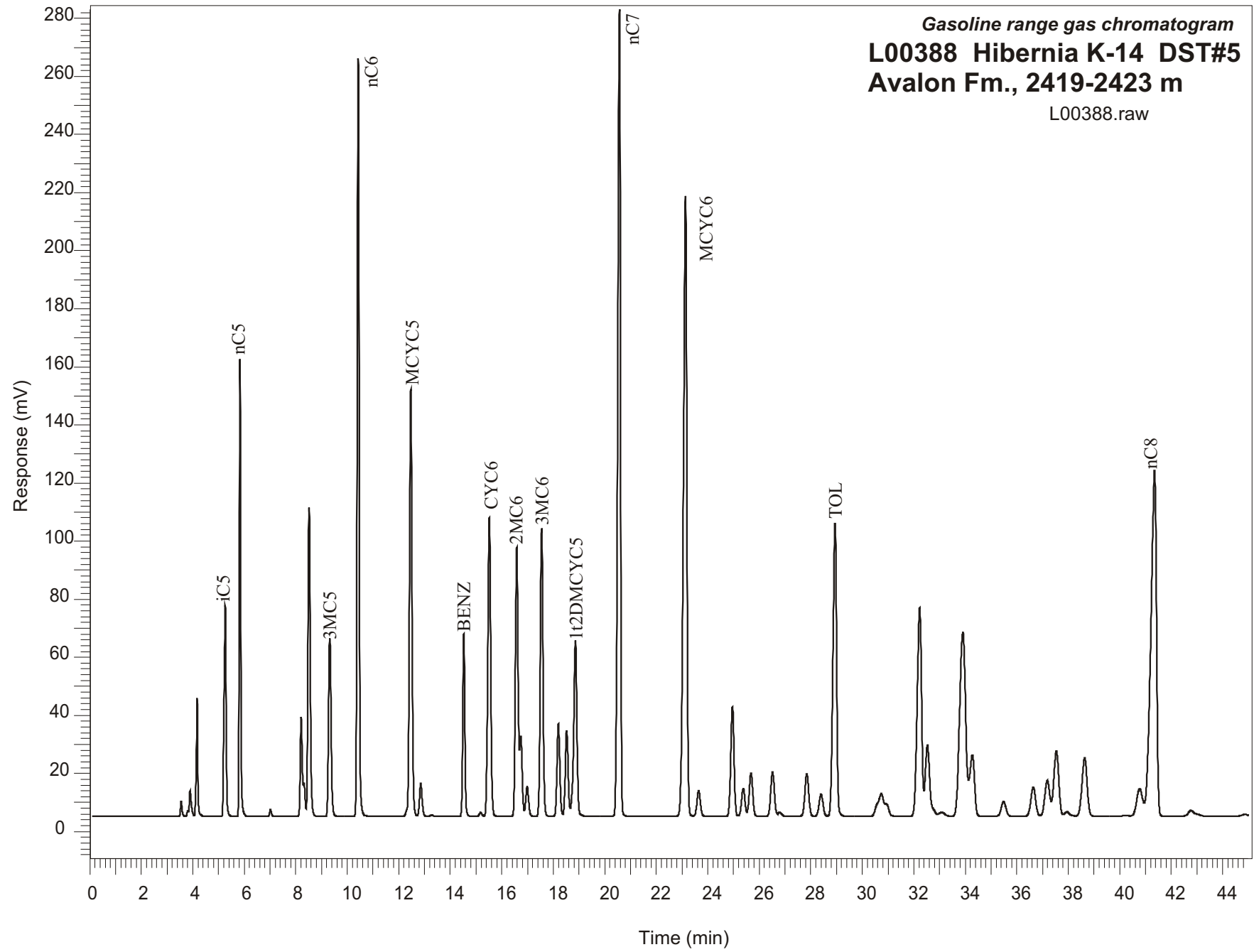


Gasoline range gas chromatogram
L00388 Hibernia K-14 DST#5
Avalon Fm., 2419-2423 m
L00388.raw



Sample Name: #388 Hibernia K-14 DST#5

GASOLINE RANGE ANALYSIS DATA

ORGANIC GEOCHEMISTRY LAB GSC CALGARY

Ret Time [min]	Compound	Area	Height [uV]
5.26	iC5	419904	72555
5.83	nC5	607310	157367
7.02	22DMC4	10984	2321
8.21	CYC5	192976	34278
8.32	23DMC4	49252	11292
8.51	2MC5	673001	106299
9.32	3MC5	418412	61352
10.42	nC6	1358256	260978
12.46	MCYC5	1018734	147046
12.86	24DMC5	82112	11356
13.28	223TMC4	3433	494
14.53	Benzene	361308	62947
15.18	33DMC5	10244	1429
15.52	CYC6	817353	103011
16.58	2MC6	675737	92726
16.74	23DMC5	184346	27664
16.99	11DMCYC5	78648	10344
17.55	3MC6	729330	99286
18.2	1c3DMCYC5	244243	31795
18.52	1t3DMCYC5	229417	29633
18.86	1t2DMCYC5	527568	60447
20.57	nC7	2011057	277708
23.13	MCYC6	1995138	213638
23.64	22DMC6	80668	8807
24.96	ECYC5	331641	37726
25.38	25DMC6	89347	9589
25.68	24DMC6	141796	14871
26.52	223TMC5	154954	15332
28.4	234TMC5	82892	7688
28.94	Toluene	976000	100843
32.23	2MC7	851446	71950
34.28	3MC7	270990	21099
40.77	1c4DMCYC6	151784	9446
41.35	nC8	1837757	119097