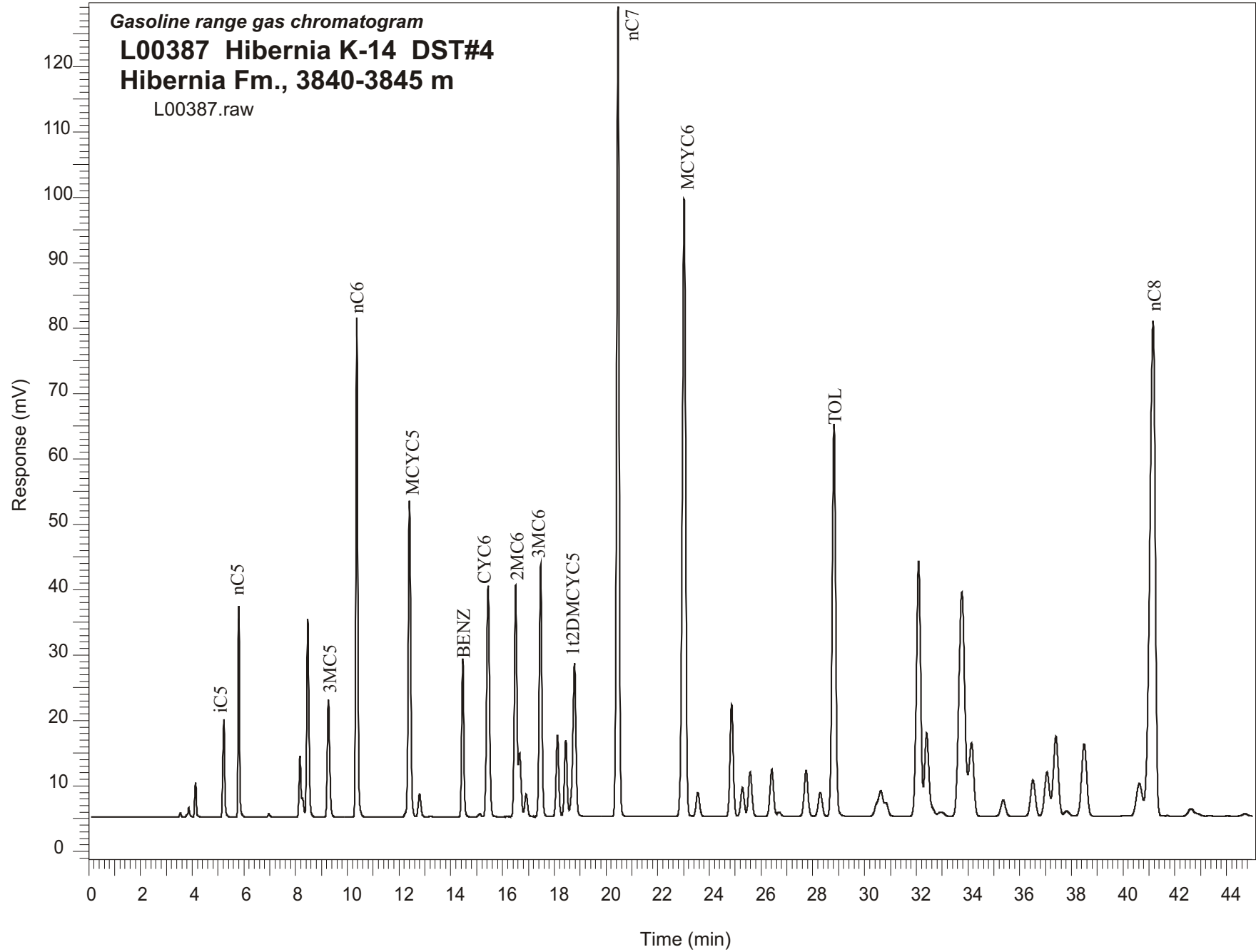


Gasoline range gas chromatogram
L00387 Hibernia K-14 DST#4
Hibernia Fm., 3840-3845 m
L00387.raw



Sample Name: #387 Hibernia K-14 DST#4

GASOLINE RANGE ANALYSIS DATA

ORGANIC GEOCHEMISTRY LAB GSC CALGARY

Ret Time [min]	Compound	Area	Height [uV]
5.22	iC5	78600	15002
5.8	nC5	119097	32377
6.97	22DMC4	2368	499
8.17	CYC5	49257	9356
8.27	23DMC4	12775	2878
8.47	2MC5	177746	30354
9.27	3MC5	115786	17979
10.37	nC6	392235	76478
12.4	MCYC5	317116	48382
12.79	24DMC5	25831	3567
13.21	223TMC4	810	135
14.46	Benzene	138498	24183
15.12	33DMC5	3224	455
15.44	CYC6	269927	35339
16.51	2MC6	248288	35434
16.66	23DMC5	65033	9709
16.91	11DMCYC5	26565	3452
17.47	3MC6	272955	38586
18.12	1c3DMCYC5	91060	12440
18.45	1t3DMCYC5	86406	11723
18.78	1t2DMCYC5	201127	23416
20.47	nC7	860347	123705
23.02	MCYC6	841082	94483
23.55	22DMC6	33527	3656
24.86	ECYC5	148332	17099
25.28	25DMC6	40289	4392
25.58	24DMC6	63897	6800
26.42	223TMC5	71261	7187
28.29	234TMC5	37993	3607
28.82	Toluene	572374	59970
32.1	2MC7	449407	38982
34.14	3MC7	145099	11262
40.63	1c4DMCYC6	78621	5012
41.16	nC8	1113066	75644