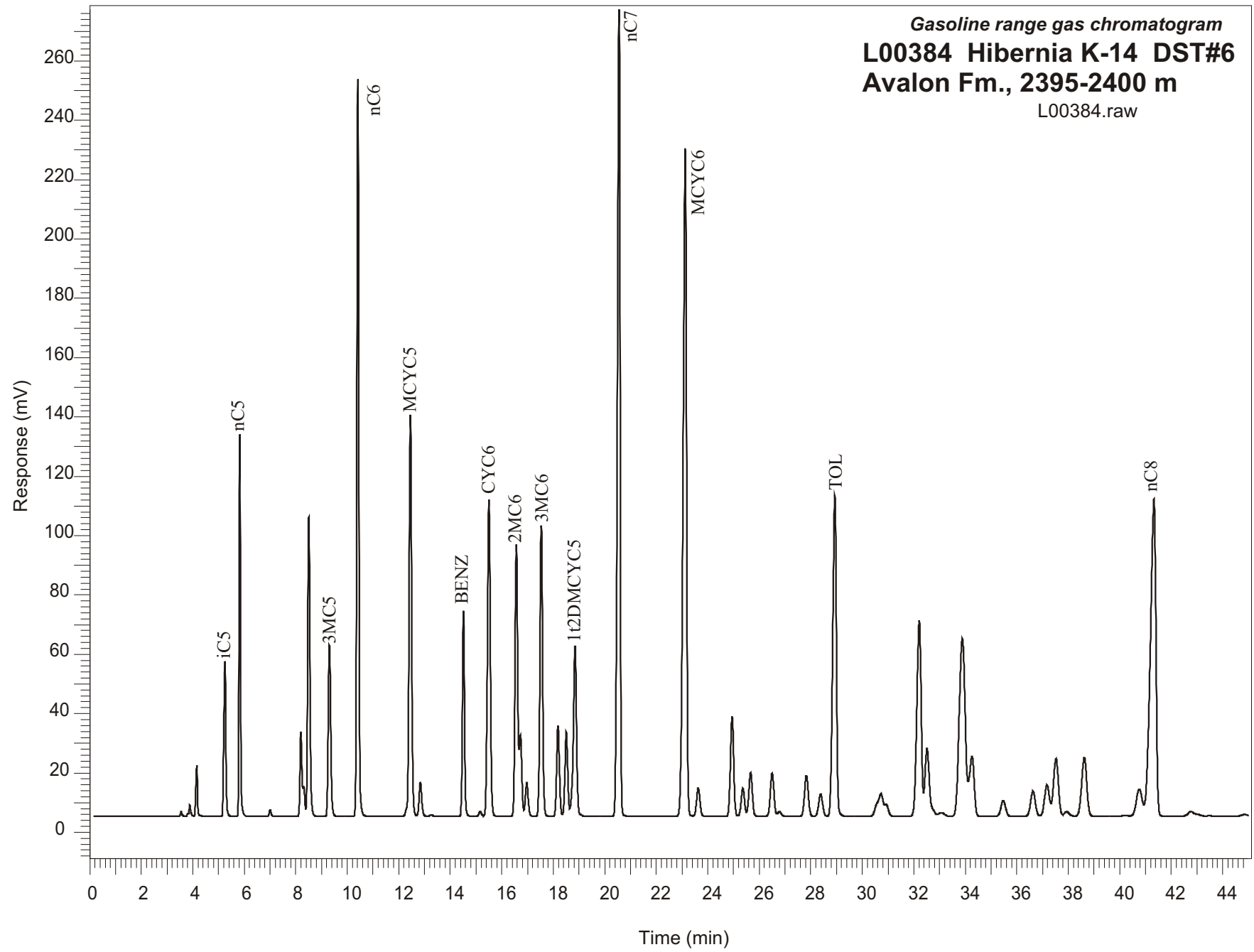


Gasoline range gas chromatogram  
L00384 Hibernia K-14 DST#6  
Avalon Fm., 2395-2400 m  
L00384.raw



Sample Name: #384 Hibernia K-14 DST#6

-----  
GASOLINE RANGE ANALYSIS DATA  
-----

ORGANIC GEOCHEMISTRY LAB GSC CALGARY  
-----

Ret Time [min]	Compound	Area	Height [uV]
5.25	iC5	297136	52422
5.82	nC5	484608	129430
7	22DMC4	11002	2324
8.2	CYC5	153936	28580
8.31	23DMC4	48458	10247
8.5	2MC5	619277	101057
9.31	3MC5	384994	57781
10.41	nC6	1298247	248626
12.45	MCYC5	923843	135358
12.84	24DMC5	83425	11460
13.26	223TMC4	3660	536
14.51	Benzene	399106	69279
15.17	33DMC5	12024	1679
15.5	CYC6	843439	106799
16.57	2MC6	661483	91714
16.72	23DMC5	183156	27405
16.97	11DMCYC5	86981	11408
17.54	3MC6	713277	98056
18.18	1c3DMCYC5	230453	30503
18.51	1t3DMCYC5	217186	28408
18.85	1t2DMCYC5	501113	57233
20.56	nC7	1964650	272007
23.12	MCYC6	2083477	225236
23.63	22DMC6	87005	9557
24.95	ECYC5	294439	33637
25.36	25DMC6	87074	9419
25.66	24DMC6	138253	14713
26.5	223TMC5	144436	14588
28.38	234TMC5	81100	7536
28.94	Toluene	1053259	108248
32.21	2MC7	777956	66078
34.26	3MC7	260775	20237
40.76	1c4DMCYC6	145225	9115
41.33	nC8	1628335	106907