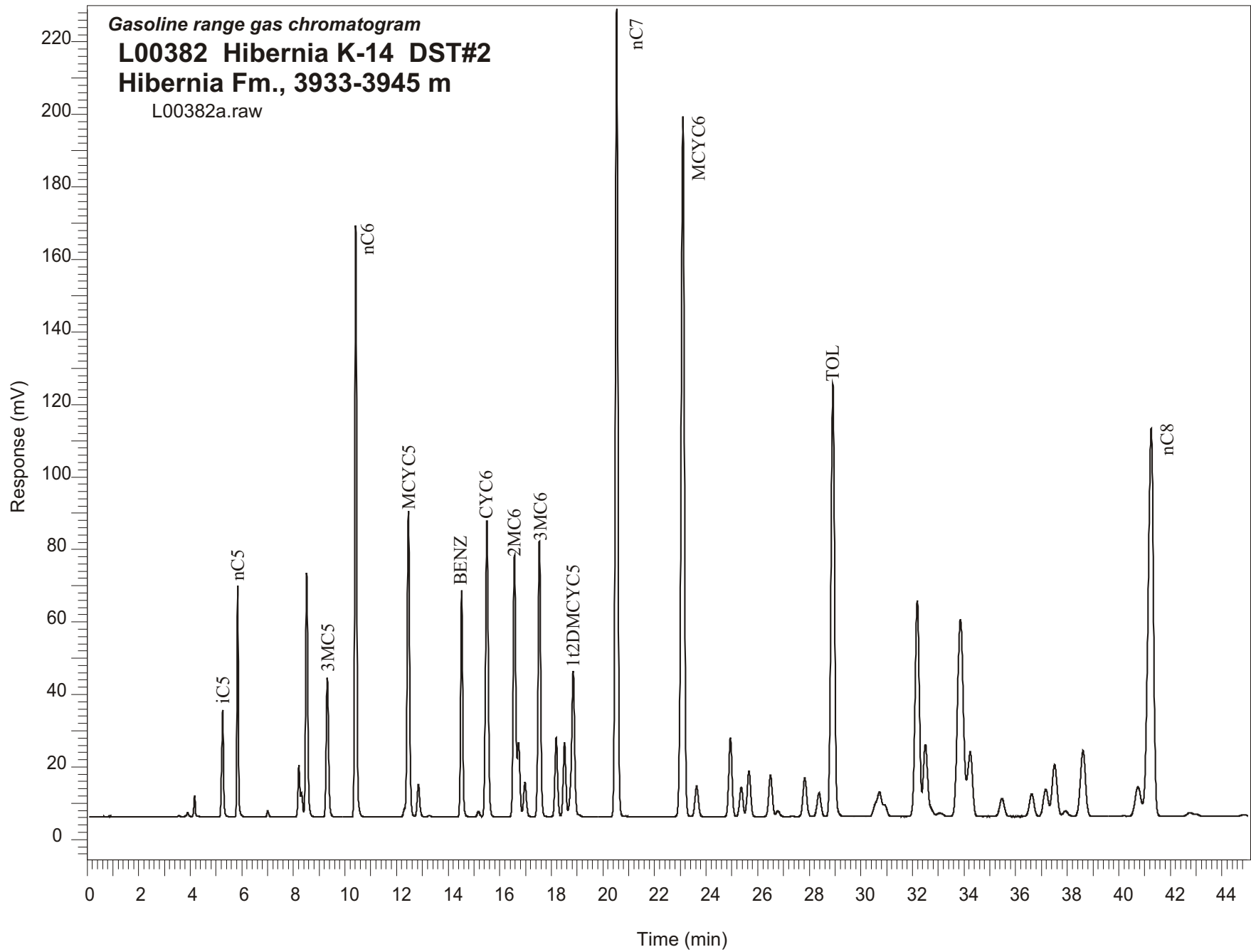


Gasoline range gas chromatogram  
**L00382 Hibernia K-14 DST#2**  
**Hibernia Fm., 3933-3945 m**  
L00382a.raw



Sample Name: #382 Hibernia K-14 DST#2

-----  
GASOLINE RANGE ANALYSIS DATA  
-----

ORGANIC GEOCHEMISTRY LAB GSC CALGARY  
-----

Ret Time [min]	Compound	Area	Height [uV]
5.24	iC5	73424	14275
5.82	nC5	113901	30853
6.99	22DMC4	4028	850
8.2	CYC5	35859	6911
8.3	23DMC4	15850	3234
8.5	2MC5	188312	32478
9.3	3MC5	117126	18583
10.4	nC6	404882	78838
12.44	MCYC5	267138	40816
12.83	24DMC5	30804	4334
13.26	223TMC4	1452	215
14.51	Benzene	172344	30207
15.16	33DMC5	5126	736
15.49	CYC6	295371	39474
16.56	2MC6	241285	34873
16.71	23DMC5	65686	9878
16.96	11DMCYC5	34562	4595
17.52	3MC6	257846	36770
18.18	1c3DMCYC5	76392	10577
18.5	1t3DMCYC5	71998	9884
18.83	1t2DMCYC5	167613	19430
20.52	nC7	750321	107642
23.09	MCYC6	819551	93402
23.62	22DMC6	37852	4118
24.94	ECYC5	91228	10545
25.36	25DMC6	36193	3948
25.66	24DMC6	56656	6054
26.49	223TMC5	54085	5566
28.37	234TMC5	33259	3150
28.91	Toluene	552304	57626
32.18	2MC7	329346	28830
34.23	3MC7	111652	8593
40.74	1c4DMCYC6	60424	3939
41.25	nC8	748394	51676