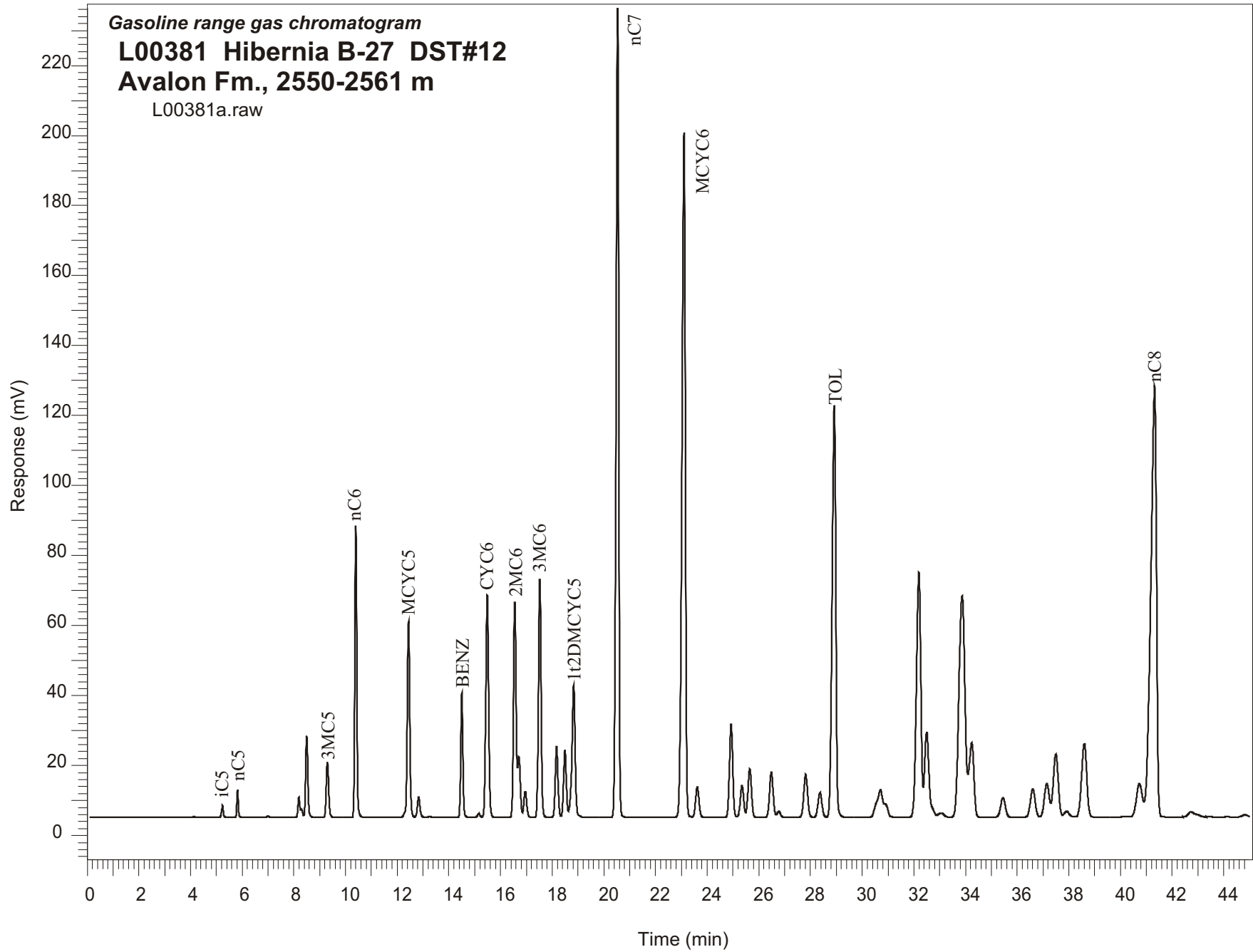


Gasoline range gas chromatogram
L00381 Hibernia B-27 DST#12
Avalon Fm., 2550-2561 m
L00381a.raw



Sample Name: #381 Hibernia B-27 DST#12

GASOLINE RANGE ANALYSIS DATA

ORGANIC GEOCHEMISTRY LAB GSC CALGARY

Ret Time [min]	Compound	Area	Height [uV]
5.24	iC5	16681	3399
5.82	nC5	29780	7842
6.99	22DMC4	2035	427
8.19	CYC5	30817	5823
8.3	23DMC4	11455	2382
8.5	2MC5	139935	23260
9.3	3MC5	103198	15816
10.4	nC6	437360	83242
12.44	MCYC5	375997	55879
12.83	24DMC5	41806	5717
13.25	223TMC4	1832	278
14.5	Benzene	204989	35564
15.16	33DMC5	7852	1103
15.49	CYC6	492863	63489
16.56	2MC6	440148	61559
16.71	23DMC5	116651	17368
16.96	11DMCYC5	57664	7539
17.52	3MC6	492389	68067
18.17	1c3DMCYC5	151303	20225
18.49	1t3DMCYC5	145924	19322
18.83	1t2DMCYC5	332588	37691
20.54	nC7	1656668	231499
23.1	MCYC6	1783203	195577
23.62	22DMC6	79420	8675
24.93	ECYC5	233089	26609
25.35	25DMC6	83907	9019
25.65	24DMC6	131524	13919
26.48	223TMC5	128567	12992
28.37	234TMC5	75969	7029
28.92	Toluene	1147905	117598
32.2	2MC7	829694	70007
34.24	3MC7	274388	21332
40.73	1c4DMCYC6	152828	9602
41.32	nC8	1906198	123017