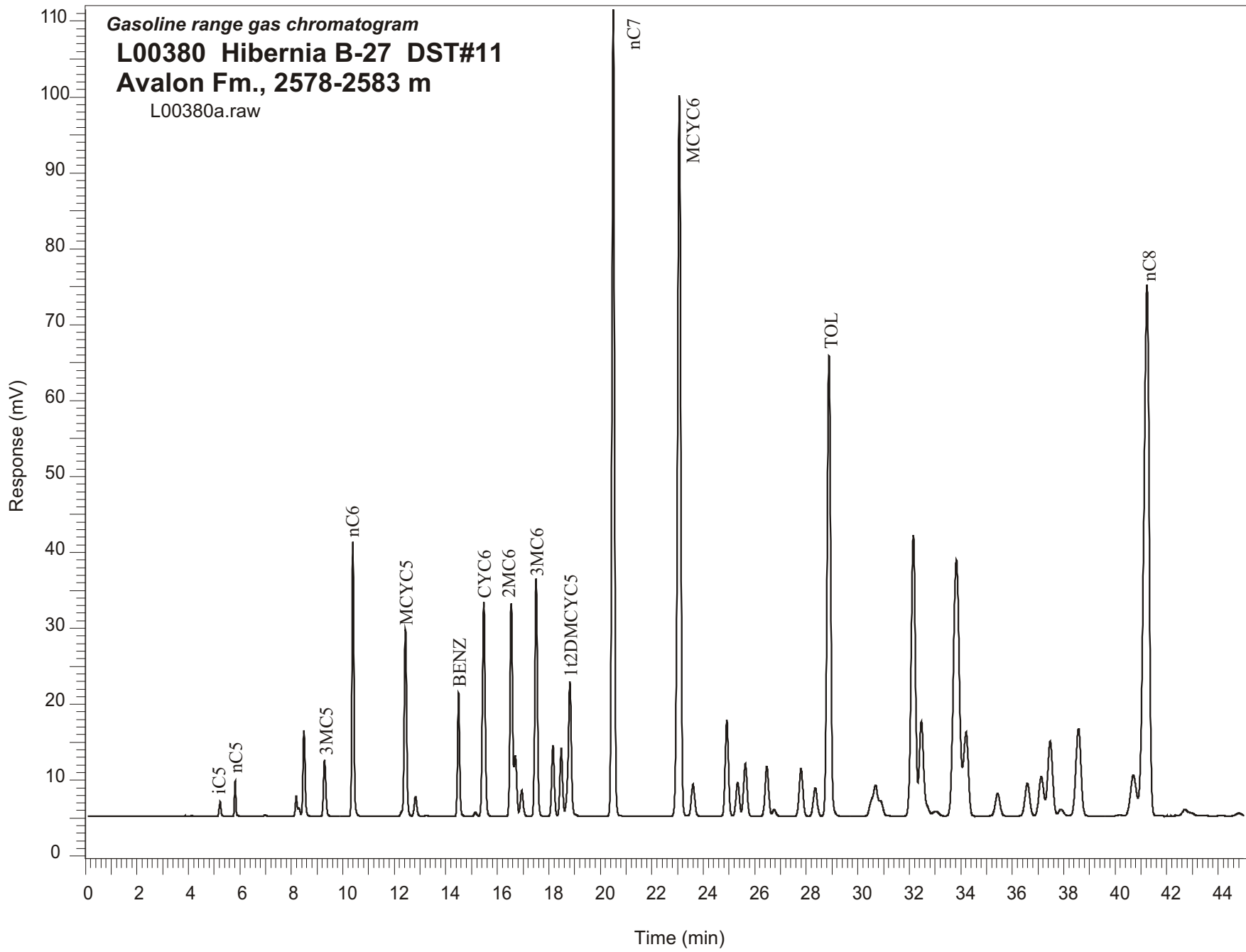


Gasoline range gas chromatogram
L00380 Hibernia B-27 DST#11
Avalon Fm., 2578-2583 m
L00380a.raw



Sample Name: #380 Hibernia B-27 DST#11

GASOLINE RANGE ANALYSIS DATA

ORGANIC GEOCHEMISTRY LAB GSC CALGARY

| Ret Time [min] | Compound | Area | Height [uV] |
|-------------------|-----------|---------|----------------|
| 5.23 | iC5 | 9869 | 1971 |
| 5.81 | nC5 | 16933 | 4656 |
| 6.98 | 22DMC4 | 1073 | 218 |
| 8.19 | CYC5 | 13777 | 2658 |
| 8.29 | 23DMC4 | 5493 | 1099 |
| 8.49 | 2MC5 | 65619 | 11314 |
| 9.29 | 3MC5 | 47338 | 7435 |
| 10.39 | nC6 | 186967 | 36187 |
| 12.43 | MCYC5 | 161435 | 24624 |
| 12.82 | 24DMC5 | 18982 | 2617 |
| 13.24 | 223TMC4 | 940 | 133 |
| 14.49 | Benzene | 93606 | 16299 |
| 15.15 | 33DMC5 | 3620 | 504 |
| 15.47 | CYC6 | 212228 | 28226 |
| 16.54 | 2MC6 | 196440 | 28083 |
| 16.7 | 23DMC5 | 53614 | 8016 |
| 16.95 | 11DMCYC5 | 26370 | 3436 |
| 17.51 | 3MC6 | 221359 | 31289 |
| 18.16 | 1c3DMCYC5 | 68169 | 9377 |
| 18.48 | 1t3DMCYC5 | 65654 | 8973 |
| 18.82 | 1t2DMCYC5 | 153275 | 17746 |
| 20.51 | nC7 | 742706 | 106234 |
| 23.07 | MCYC6 | 833908 | 94877 |
| 23.6 | 22DMC6 | 39002 | 4216 |
| 24.92 | ECYC5 | 110185 | 12710 |
| 25.33 | 25DMC6 | 41097 | 4472 |
| 25.63 | 24DMC6 | 65048 | 6945 |
| 26.47 | 223TMC5 | 64257 | 6606 |
| 28.35 | 234TMC5 | 39485 | 3715 |
| 28.89 | Toluene | 581708 | 60597 |
| 32.16 | 2MC7 | 427283 | 37056 |
| 34.21 | 3MC7 | 143154 | 11084 |
| 40.7 | 1c4DMCYC6 | 83425 | 5380 |
| 41.23 | nC8 | 1025601 | 69997 |