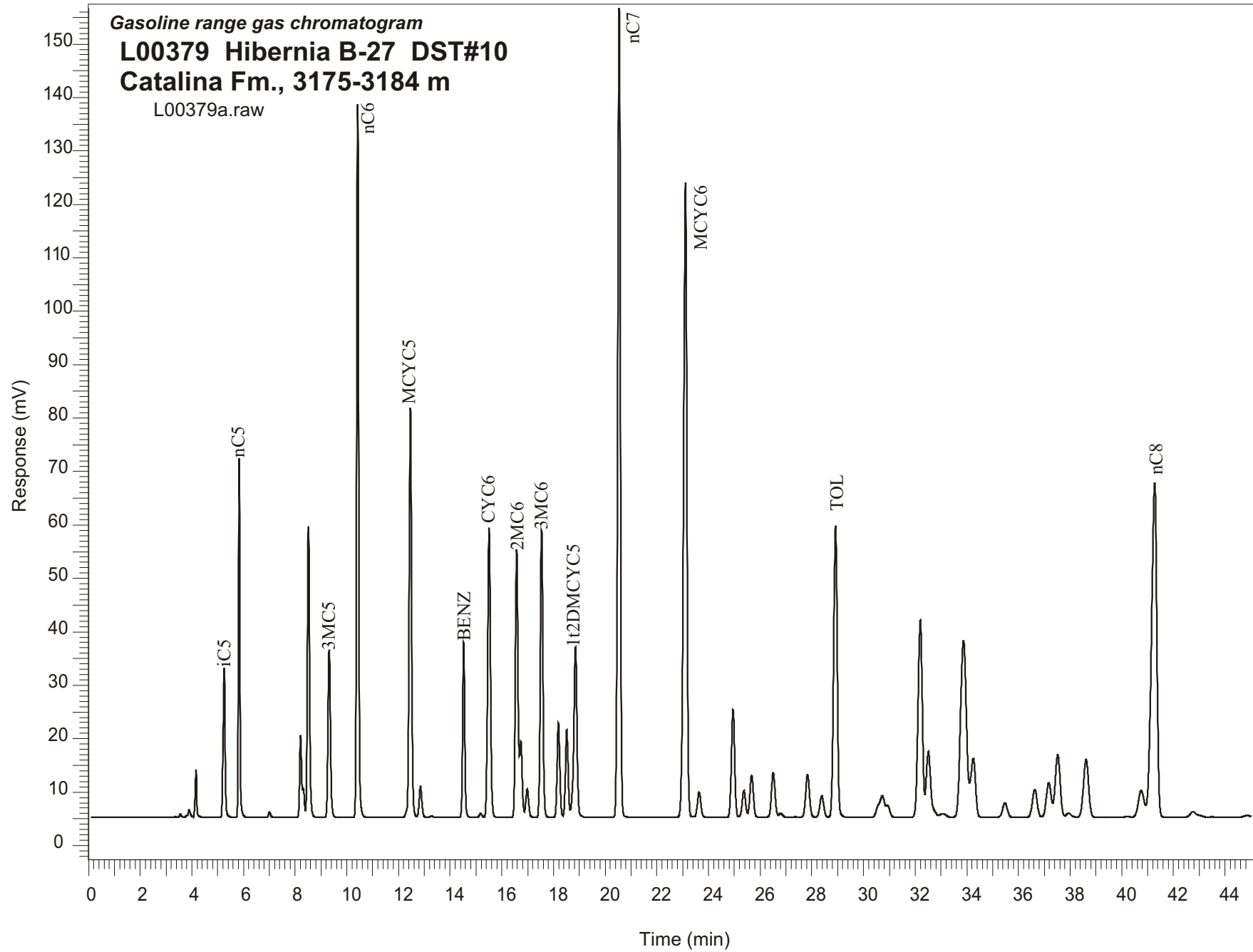


Gasoline range gas chromatogram
L00379 Hibernia B-27 DST#10
Catalina Fm., 3175-3184 m
L00379a.raw



Sample Name: #379 Hibernia B-27 DST#10

GASOLINE RANGE ANALYSIS DATA

ORGANIC GEOCHEMISTRY LAB GSC CALGARY

Ret Time [min]	Compound	Area	Height [uV]
5.25	iC5	156259	27914
5.83	nC5	257292	67414
7	22DMC4	5331	1063
8.21	CYC5	83977	15369
8.31	23DMC4	24828	5446
8.51	2MC5	329114	54445
9.32	3MC5	206379	31381
10.42	nC6	698090	133348
12.46	MCYC5	510534	76581
12.85	24DMC5	42740	5851
13.27	223TMC4	1648	255
14.52	Benzene	190434	32766
15.18	33DMC5	5485	767
15.51	CYC6	415993	54171
16.58	2MC6	354300	50122
16.73	23DMC5	96253	14253
16.98	11DMCYC5	41084	5354
17.54	3MC6	382167	53619
18.19	1c3DMCYC5	130085	17670
18.51	1t3DMCYC5	121368	16348
18.85	1t2DMCYC5	277274	31937
20.55	nC7	1070079	151420
23.11	MCYC6	1067033	118772
23.64	22DMC6	43302	4664
24.95	ECYC5	175207	20111
25.37	25DMC6	45921	4972
25.67	24DMC6	73675	7811
26.51	223TMC5	81984	8357
28.39	234TMC5	42615	4006
28.92	Toluene	522572	54501
32.2	2MC7	425151	36917
34.25	3MC7	143475	11050
40.75	1c4DMCYC6	77552	4964
41.27	nC8	912328	62455