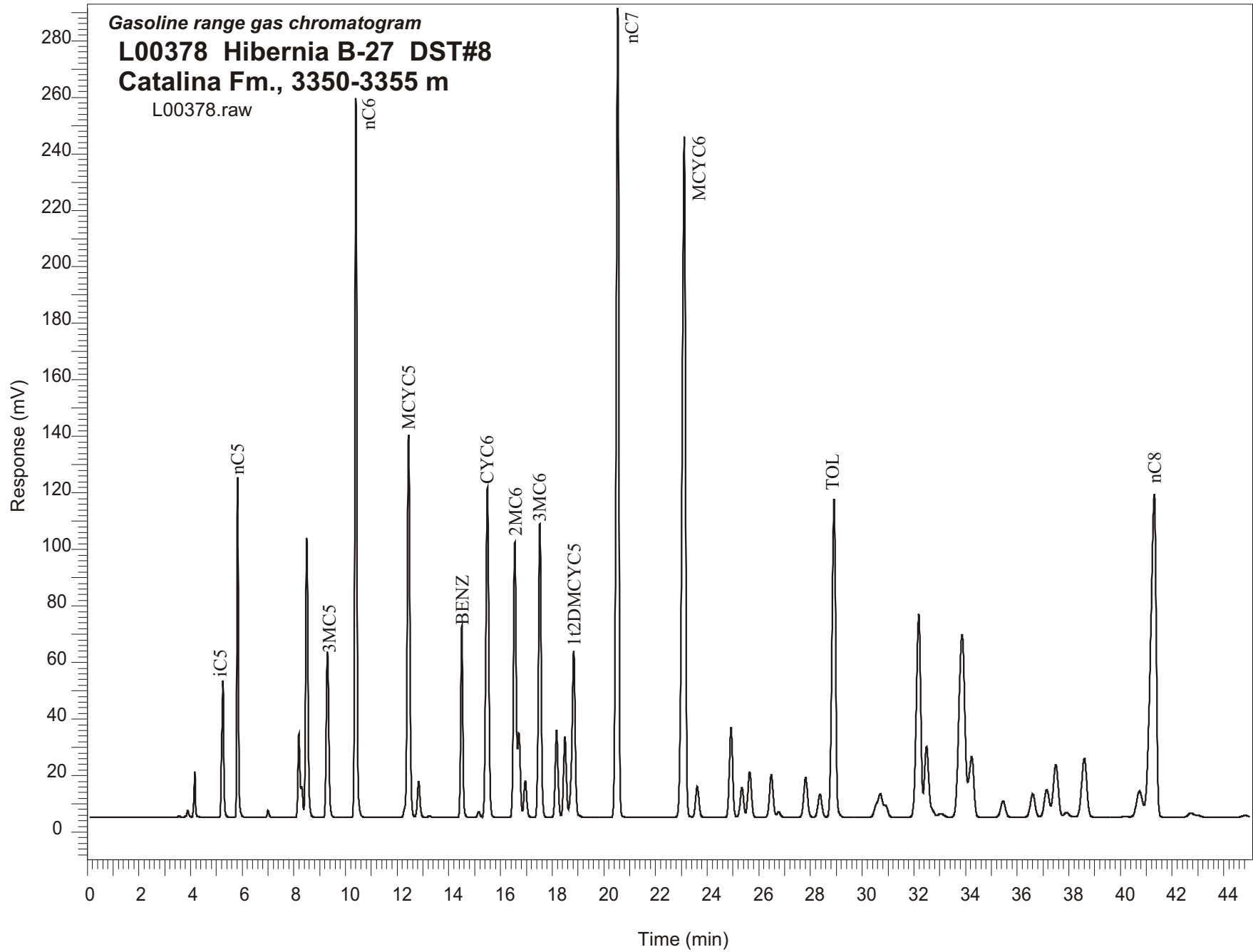


Gasoline range gas chromatogram
L00378 Hibernia B-27 DST#8
Catalina Fm., 3350-3355 m
L00378.raw



Sample Name: #378 Hibernia B-27 DST#8

GASOLINE RANGE ANALYSIS DATA

ORGANIC GEOCHEMISTRY LAB GSC CALGARY

Ret Time [min]	Compound	Area	Height [uV]
5.26	iC5	272559	48426
5.82	nC5	464625	120200
7	22DMC4	12020	2529
8.19	CYC5	166020	29699
8.3	23DMC4	49819	10882
8.5	2MC5	629201	99050
9.3	3MC5	399537	58567
10.4	nC6	1327412	254374
12.44	MCYC5	951311	135608
12.83	24DMC5	92321	12755
13.25	223TMC4	4056	601
14.5	Benzene	390771	67858
15.16	33DMC5	14504	2028
15.49	CYC6	940244	116897
16.56	2MC6	712454	97361
16.71	23DMC5	199178	29859
16.96	11DMCYC5	98359	13015
17.52	3MC6	766144	103880
18.17	1c3DMCYC5	236993	30790
18.49	1t3DMCYC5	222367	28537
18.83	1t2DMCYC5	518631	58814
20.54	nC7	2074762	286420
23.11	MCYC6	2253261	241093
23.62	22DMC6	99470	10892
24.93	ECYC5	278084	31811
25.35	25DMC6	97907	10494
25.65	24DMC6	153555	16141
26.48	223TMC5	150284	15119
28.37	234TMC5	87588	8164
28.91	Toluene	1093768	112479
32.19	2MC7	850834	71868
34.24	3MC7	276700	21449
40.73	1c4DMCYC6	146071	9184
41.31	nC8	1750011	114214