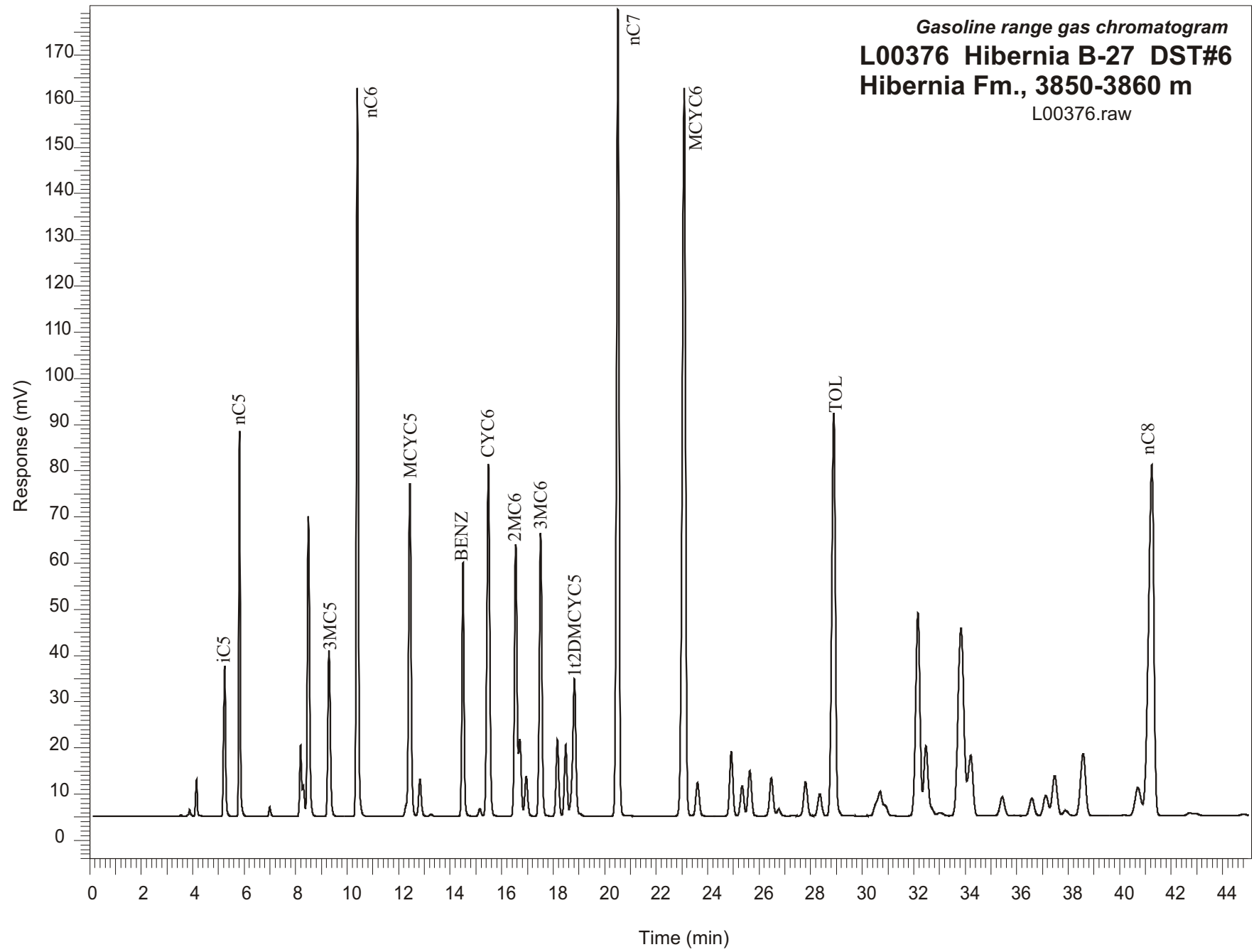


Gasoline range gas chromatogram
L00376 Hibernia B-27 DST#6
Hibernia Fm., 3850-3860 m
L00376.raw



Sample Name: #376 Hibernia B-27 3850 to 3860m

GASOLINE RANGE ANALYSIS DATA

ORGANIC GEOCHEMISTRY LAB GSC CALGARY

Ret Time [min]	Compound	Area	Height [uV]
5.25	iC5	185659	32640
5.82	nC5	311725	83556
6.99	22DMC4	10020	2034
8.19	CYC5	81565	15399
8.3	23DMC4	33737	6721
8.49	2MC5	394054	64947
9.3	3MC5	238821	35912
10.4	nC6	817773	157674
12.43	MCYC5	492697	72060
12.83	24DMC5	58869	8036
13.25	223TMC4	2934	427
14.5	Benzene	315597	54962
15.15	33DMC5	11157	1549
15.48	CYC6	593960	76266
16.55	2MC6	418483	58915
16.7	23DMC5	112756	16730
16.95	11DMCYC5	65661	8618
17.51	3MC6	438447	61175
18.17	1c3DMCYC5	123276	16588
18.49	1t3DMCYC5	116159	15465
18.82	1t2DMCYC5	264704	29727
20.52	nC7	1231727	174748
23.09	MCYC6	1417889	157599
23.61	22DMC6	66943	7223
25.34	25DMC6	60834	6551
25.64	24DMC6	92833	9843
26.47	223TMC5	81095	8278
28.35	234TMC5	51016	4780
28.9	Toluene	846176	87408
32.17	2MC7	509170	43914
34.22	3MC7	171355	13163
40.71	1c4DMCYC6	94494	6096
41.25	nC8	1115560	76019