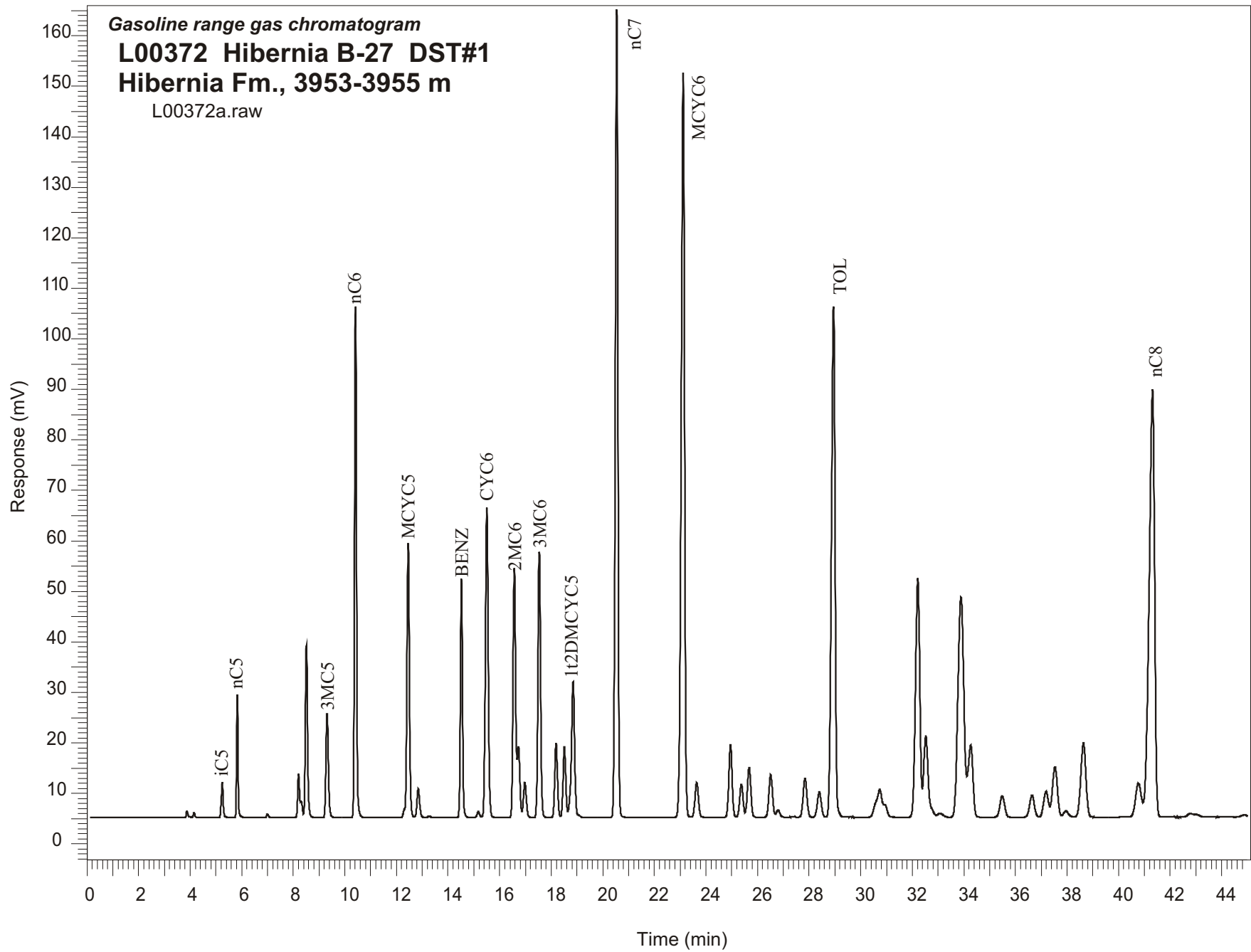


Gasoline range gas chromatogram
L00372 Hibernia B-27 DST#1
Hibernia Fm., 3953-3955 m
L00372a.raw



Sample Name: #372 Hibernia B-27 3953 to 3955m

GASOLINE RANGE ANALYSIS DATA

ORGANIC GEOCHEMISTRY LAB GSC CALGARY

Ret Time [min]	Compound	Area	Height [uV]
5.25	iC5	36523	6986
5.83	nC5	90400	24393
7	22DMC4	3125	654
8.21	CYC5	46139	8735
8.31	23DMC4	15374	3251
8.51	2MC5	203379	34037
9.31	3MC5	134622	20559
10.41	nC6	525626	101193
12.45	MCYC5	366176	54320
12.85	24DMC5	42189	5753
13.27	223TMC4	1971	289
14.52	Benzene	271379	47325
15.18	33DMC5	8244	1142
15.5	CYC6	476916	61450
16.57	2MC6	350182	49423
16.73	23DMC5	95895	14080
16.98	11DMCYC5	54267	7020
17.54	3MC6	377591	52668
18.19	1c3DMCYC5	109641	14787
18.51	1t3DMCYC5	104513	13968
18.85	1t2DMCYC5	239872	26886
20.54	nC7	1122320	159836
23.12	MCYC6	1326813	147624
23.64	22DMC6	63518	6844
24.95	ECYC5	125364	14348
25.38	25DMC6	60568	6514
25.67	24DMC6	93107	9846
26.51	223TMC5	83207	8430
28.4	234TMC5	53922	5035
28.95	Toluene	985776	101189
32.21	2MC7	548779	47283
34.27	3MC7	184934	14289
40.77	1c4DMCYC6	104975	6689
41.32	nC8	1258115	84657