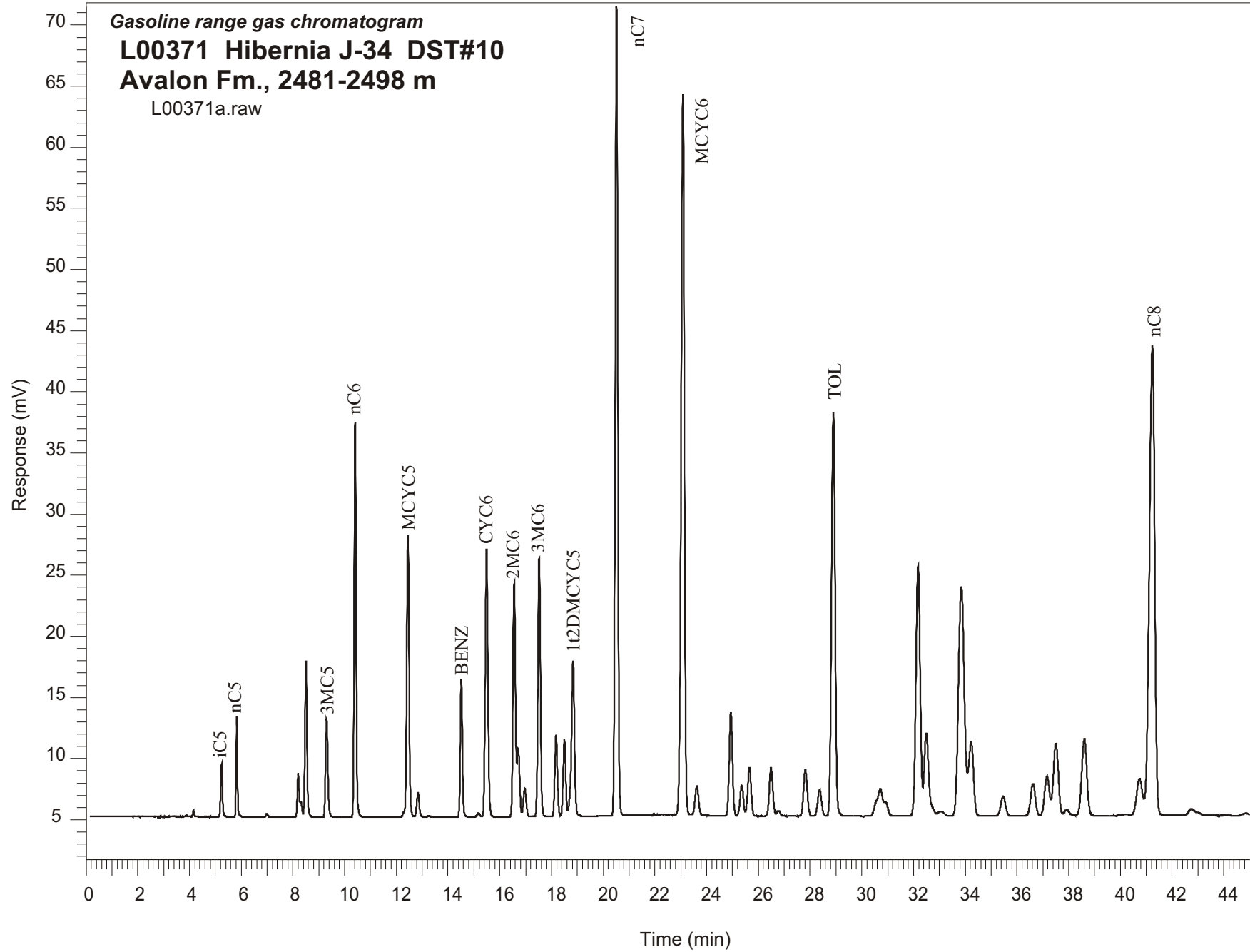


Gasoline range gas chromatogram
L00371 Hibernia J-34 DST#10
Avalon Fm., 2481-2498 m
L00371a.raw



Sample Name: #371 Hibernia J-34 2481 to 2498m

GASOLINE RANGE ANALYSIS DATA

ORGANIC GEOCHEMISTRY LAB GSC CALGARY

Ret Time [min]	Compound	Area	Height [uV]
5.25	iC5	21333	4345
5.83	nC5	29812	8225
7	22DMC4	1325	274
8.2	CYC5	18434	3600
8.31	23DMC4	6263	1312
8.5	2MC5	71599	12781
9.3	3MC5	49310	7998
10.41	nC6	165530	32330
12.45	MCYC5	148027	23078
12.84	24DMC5	14017	1992
13.26	223TMC4	623	96
14.51	Benzene	65209	11343
15.17	33DMC5	2388	334
15.49	CYC6	162630	21921
16.56	2MC6	131189	19170
16.71	23DMC5	37245	5589
16.97	11DMCYC5	17926	2340
17.52	3MC6	146856	21143
18.18	1c3DMCYC5	47589	6672
18.5	1t3DMCYC5	45393	6314
18.83	1t2DMCYC5	107349	12745
20.52	nC7	457853	66176
23.08	MCYC6	512895	58952
23.62	22DMC6	22097	2393
24.94	ECYC5	73148	8502
25.36	25DMC6	22345	2490
25.66	24DMC6	36259	3921
26.49	223TMC5	38318	3960
28.37	234TMC5	22588	2155
28.9	Toluene	315710	33027
32.18	2MC7	232048	20437
34.23	3MC7	79085	6081
40.74	1c4DMCYC6	45725	2975
41.24	nC8	551918	38422