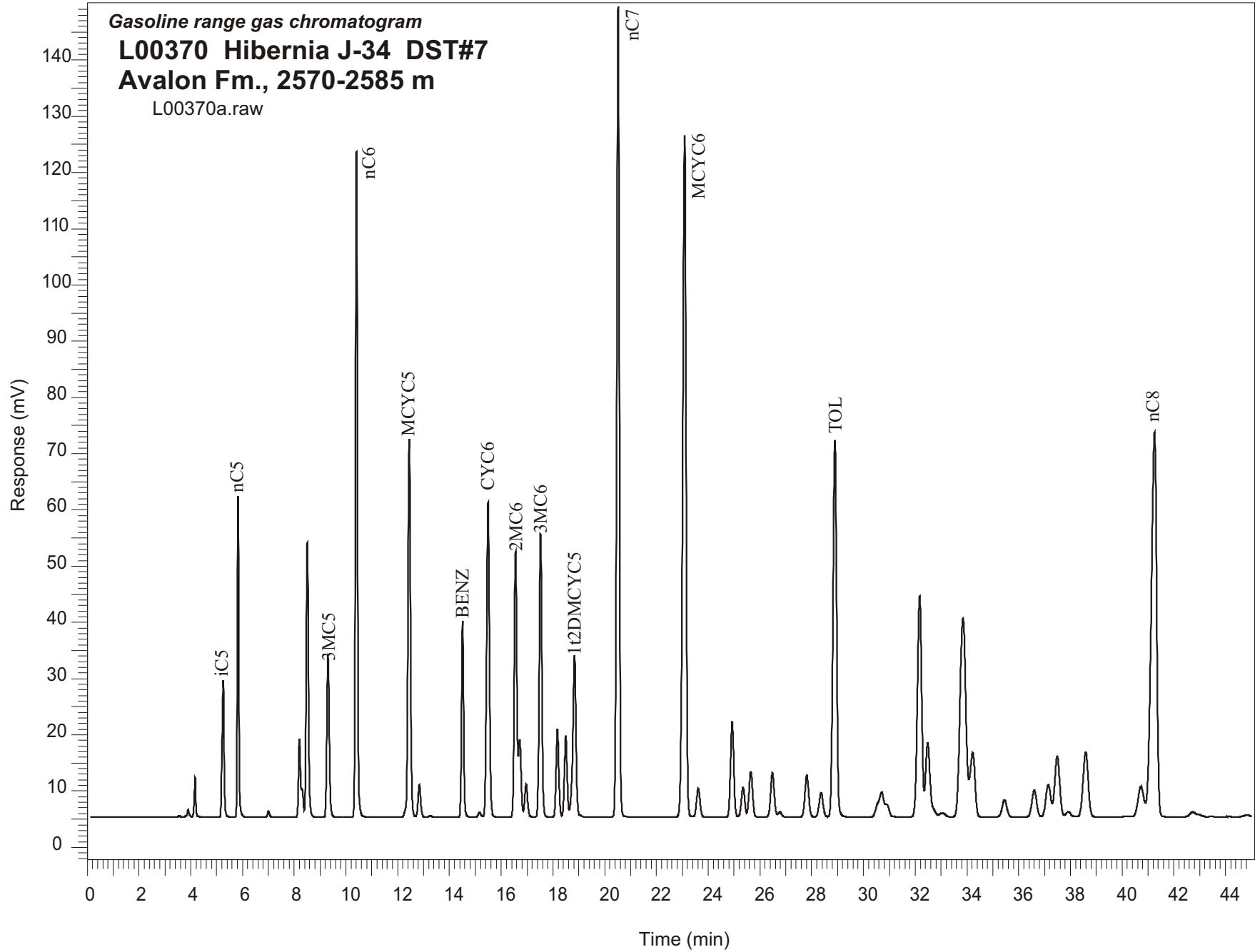


Gasoline range gas chromatogram  
**L00370 Hibernia J-34 DST#7**  
**Avalon Fm., 2570-2585 m**  
L00370a.raw



Sample Name: #370 Hibernia J-34 DST#7

-----  
GASOLINE RANGE ANALYSIS DATA  
-----

ORGANIC GEOCHEMISTRY LAB GSC CALGARY  
-----

| Ret Time<br>[min] | Compound  | Area    | Height<br>[uV] |
|-------------------|-----------|---------|----------------|
| 5.26              | iC5       | 135268  | 24449          |
| 5.83              | nC5       | 221217  | 57033          |
| 7                 | 22DMC4    | 5303    | 1116           |
| 8.2               | CYC5      | 76907   | 13951          |
| 8.3               | 23DMC4    | 22931   | 5106           |
| 8.5               | 2MC5      | 297284  | 48807          |
| 9.31              | 3MC5      | 186913  | 28390          |
| 10.4              | nC6       | 623633  | 118687         |
| 12.44             | MCYC5     | 453912  | 67349          |
| 12.84             | 24DMC5    | 41776   | 5743           |
| 13.26             | 223TMC4   | 1749    | 268            |
| 14.51             | Benzene   | 202089  | 34927          |
| 15.16             | 33DMC5    | 6176    | 875            |
| 15.49             | CYC6      | 431598  | 55998          |
| 16.56             | 2MC6      | 334195  | 47227          |
| 16.71             | 23DMC5    | 92910   | 13700          |
| 16.96             | 11DMCYC5  | 44790   | 5852           |
| 17.52             | 3MC6      | 361384  | 50346          |
| 18.17             | 1c3DMCYC5 | 114919  | 15576          |
| 18.5              | 1t3DMCYC5 | 108497  | 14520          |
| 18.83             | 1t2DMCYC5 | 250322  | 28727          |
| 20.52             | nC7       | 1011926 | 144101         |
| 23.09             | MCYC6     | 1087806 | 121318         |
| 23.62             | 22DMC6    | 47376   | 5121           |
| 24.93             | ECYC5     | 147765  | 16945          |
| 25.35             | 25DMC6    | 48533   | 5251           |
| 25.65             | 24DMC6    | 76787   | 8136           |
| 26.48             | 223TMC5   | 77401   | 7866           |
| 28.36             | 234TMC5   | 45332   | 4272           |
| 28.9              | Toluene   | 644098  | 66984          |
| 32.17             | 2MC7      | 452806  | 39279          |
| 34.22             | 3MC7      | 149509  | 11464          |
| 40.73             | 1c4DMCYC6 | 83689   | 5388           |
| 41.25             | nC8       | 1003946 | 68461          |