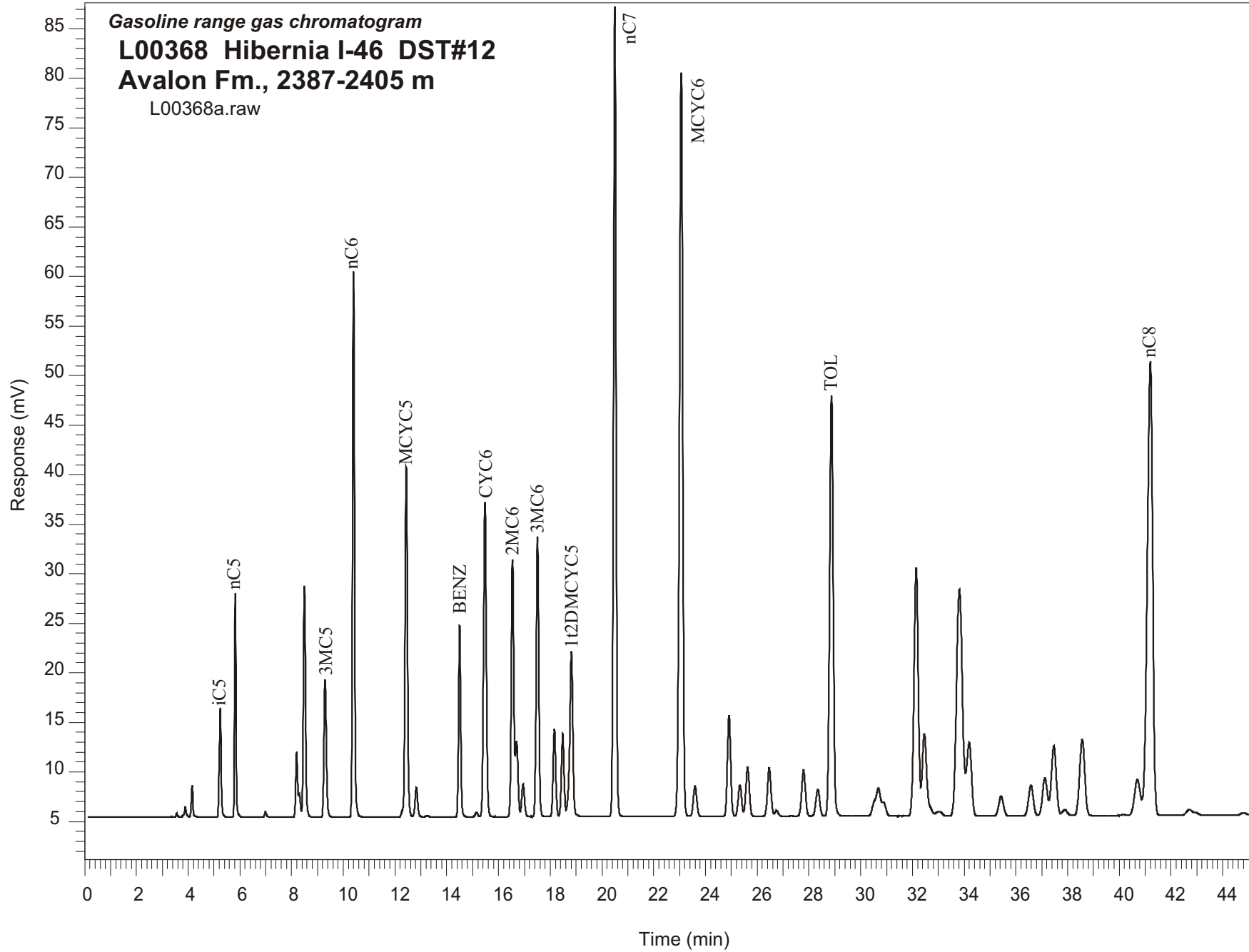


Gasoline range gas chromatogram
L00368 Hibernia I-46 DST#12
Avalon Fm., 2387-2405 m
L00368a.raw



Sample Name: #368 Hibernia I-46 DST#12

GASOLINE RANGE ANALYSIS DATA

ORGANIC GEOCHEMISTRY LAB GSC CALGARY

Ret Time [min]	Compound	Area	Height [uV]
5.25	iC5	58801	11073
5.82	nC5	85212	22613
6.99	22DMC4	2542	521
8.19	CYC5	35273	6592
8.3	23DMC4	11047	2361
8.49	2MC5	136436	23325
9.3	3MC5	88875	13870
10.39	nC6	288814	55161
12.43	MCYC5	231650	35294
12.82	24DMC5	21538	3002
13.25	223TMC4	908	139
14.5	Benzene	111881	19348
15.15	33DMC5	3454	483
15.47	CYC6	239108	31769
16.54	2MC6	181335	26007
16.7	23DMC5	51309	7661
16.95	11DMCYC5	25180	3284
17.51	3MC6	199626	28298
18.16	1c3DMCYC5	64245	8884
18.48	1t3DMCYC5	61228	8387
18.82	1t2DMCYC5	143453	16712
20.5	nC7	568878	81685
23.06	MCYC6	659121	75066
23.6	22DMC6	28454	3093
24.91	ECYC5	88960	10206
25.33	25DMC6	29133	3166
25.63	24DMC6	46224	4942
26.47	223TMC5	47416	4887
28.34	234TMC5	28281	2679
28.88	Toluene	406792	42453
32.15	2MC7	284409	24939
34.2	3MC7	96608	7424
40.7	1c4DMCYC6	56041	3627
41.2	nC8	659691	45759