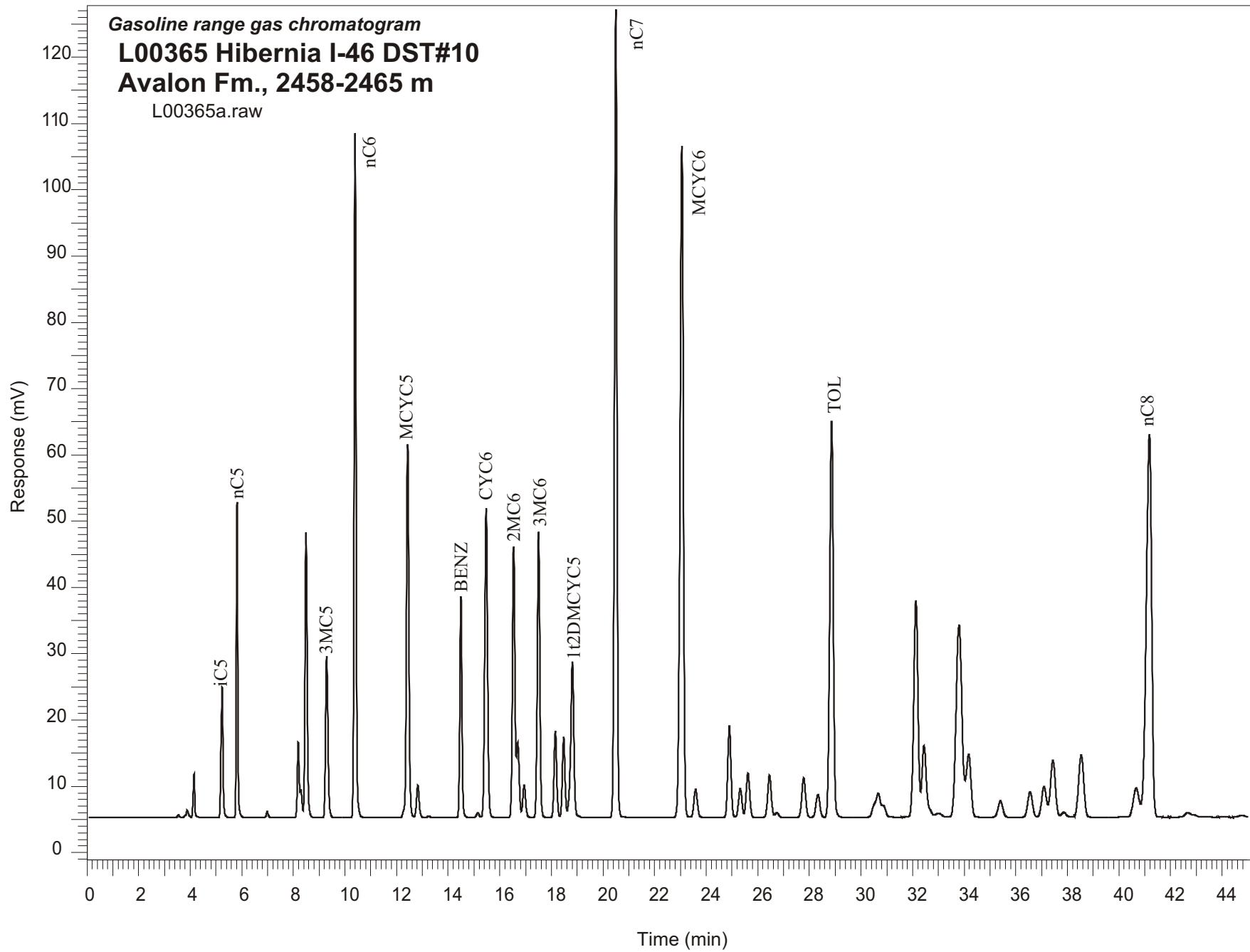


Gasoline range gas chromatogram
L00365 Hibernia I-46 DST#10
Avalon Fm., 2458-2465 m
L00365a.raw



Sample Name: #365 Hibernia I-46 DST#10

GASOLINE RANGE ANALYSIS DATA

ORGANIC GEOCHEMISTRY LAB GSC CALGARY

Ret Time [min]	Compound	Area	Height [uV]
5.24	iC5	109309	19695
5.81	nC5	178325	47658
6.98	22DMC4	4747	939
8.19	CYC5	60639	11363
8.29	23DMC4	19939	4221
8.49	2MC5	253781	42980
9.29	3MC5	157948	24370
10.39	nC6	535728	103250
12.43	MCYC5	373388	56319
12.82	24DMC5	35808	4864
13.24	223TMC4	1531	223
14.49	Benzene	193351	33471
15.15	33DMC5	5517	751
15.47	CYC6	359088	46684
16.54	2MC6	282910	40829
16.69	23DMC5	77755	11343
16.95	11DMCYC5	37760	4882
17.5	3MC6	303736	43041
18.15	1c3DMCYC5	95473	13058
18.48	1t3DMCYC5	89763	12170
18.81	1t2DMCYC5	206181	23551
20.5	nC7	850903	121823
23.06	MCYC6	903382	101284
23.59	22DMC6	39248	4214
24.9	ECYC5	119049	13797
25.32	25DMC6	40026	4350
25.62	24DMC6	63142	6723
26.45	223TMC5	62744	6378
28.33	234TMC5	36981	3464
28.86	Toluene	571408	59762
32.13	2MC7	373304	32676
34.18	3MC7	122548	9432
40.66	1c4DMCYC6	68188	4406
41.18	nC8	835847	57681