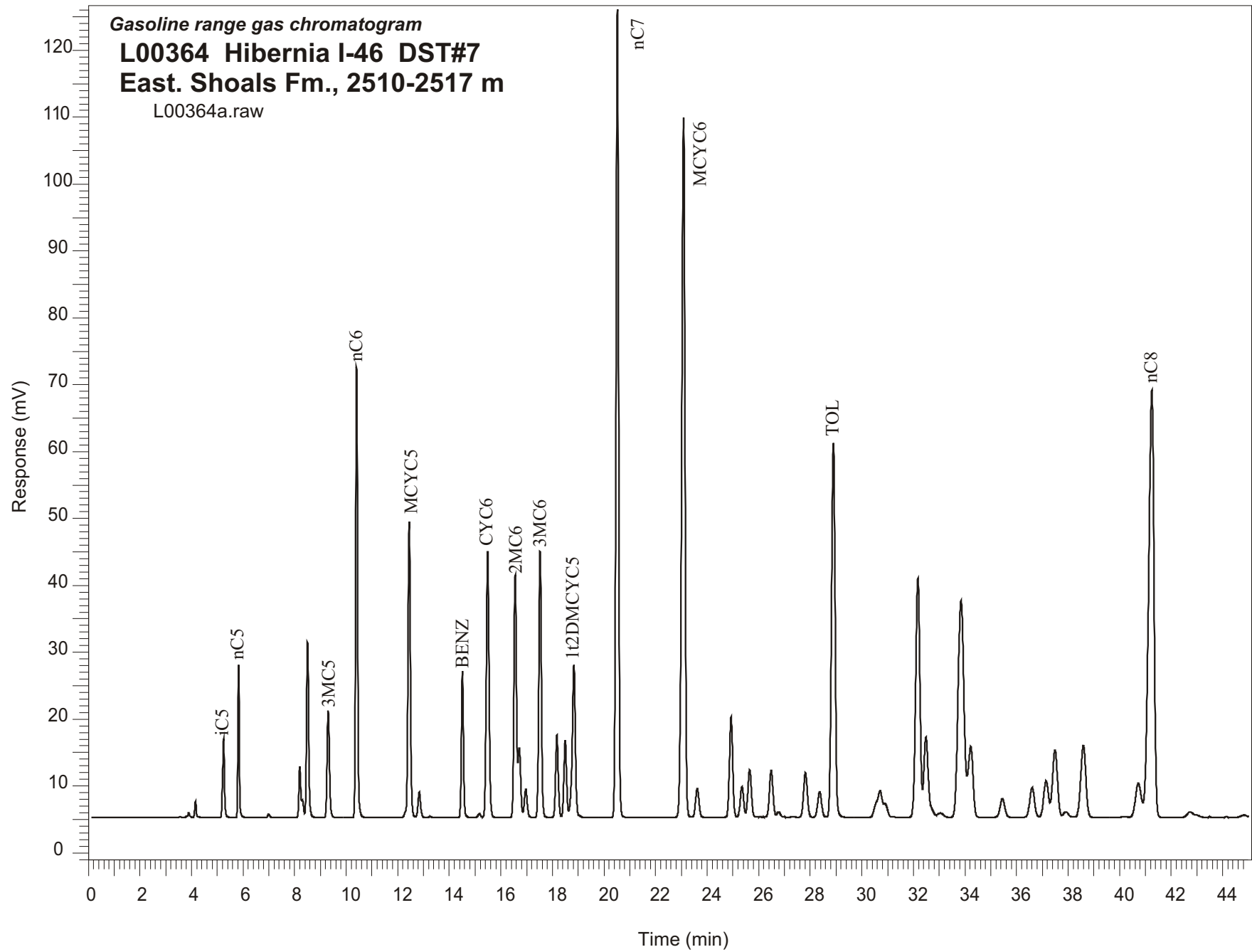


Gasoline range gas chromatogram
L00364 Hibernia I-46 DST#7
East. Shoals Fm., 2510-2517 m
L00364a.raw



Sample Name: #364 Hibernia I-46 2510 to 2517m DST#7

GASOLINE RANGE ANALYSIS DATA

ORGANIC GEOCHEMISTRY LAB GSC CALGARY

Ret Time [min]	Compound	Area	Height [uV]
5.25	iC5	61344	11804
5.82	nC5	84171	22782
6.99	22DMC4	2608	544
8.2	CYC5	40064	7687
8.3	23DMC4	12258	2629
8.5	2MC5	152223	26273
9.3	3MC5	101429	15947
10.4	nC6	348174	67424
12.44	MCYC5	287199	44202
12.83	24DMC5	27294	3791
13.26	223TMC4	1172	172
14.51	Benzene	126290	21937
15.16	33DMC5	4214	596
15.49	CYC6	300685	39756
16.56	2MC6	252346	36250
16.71	23DMC5	69936	10362
16.96	11DMCYC5	32710	4257
17.52	3MC6	280249	39788
18.17	1c3DMCYC5	89077	12308
18.5	1t3DMCYC5	84898	11593
18.83	1t2DMCYC5	196980	22778
20.52	nC7	843578	120730
23.09	MCYC6	927016	104609
23.62	22DMC6	39883	4342
24.93	ECYC5	129816	14994
25.35	25DMC6	41861	4552
25.65	24DMC6	66767	7119
26.48	223TMC5	68539	7019
28.36	234TMC5	40596	3812
28.9	Toluene	537879	55983
32.18	2MC7	411573	35752
34.22	3MC7	138567	10651
40.72	1c4DMCYC6	78565	5058
41.25	nC8	932414	63802