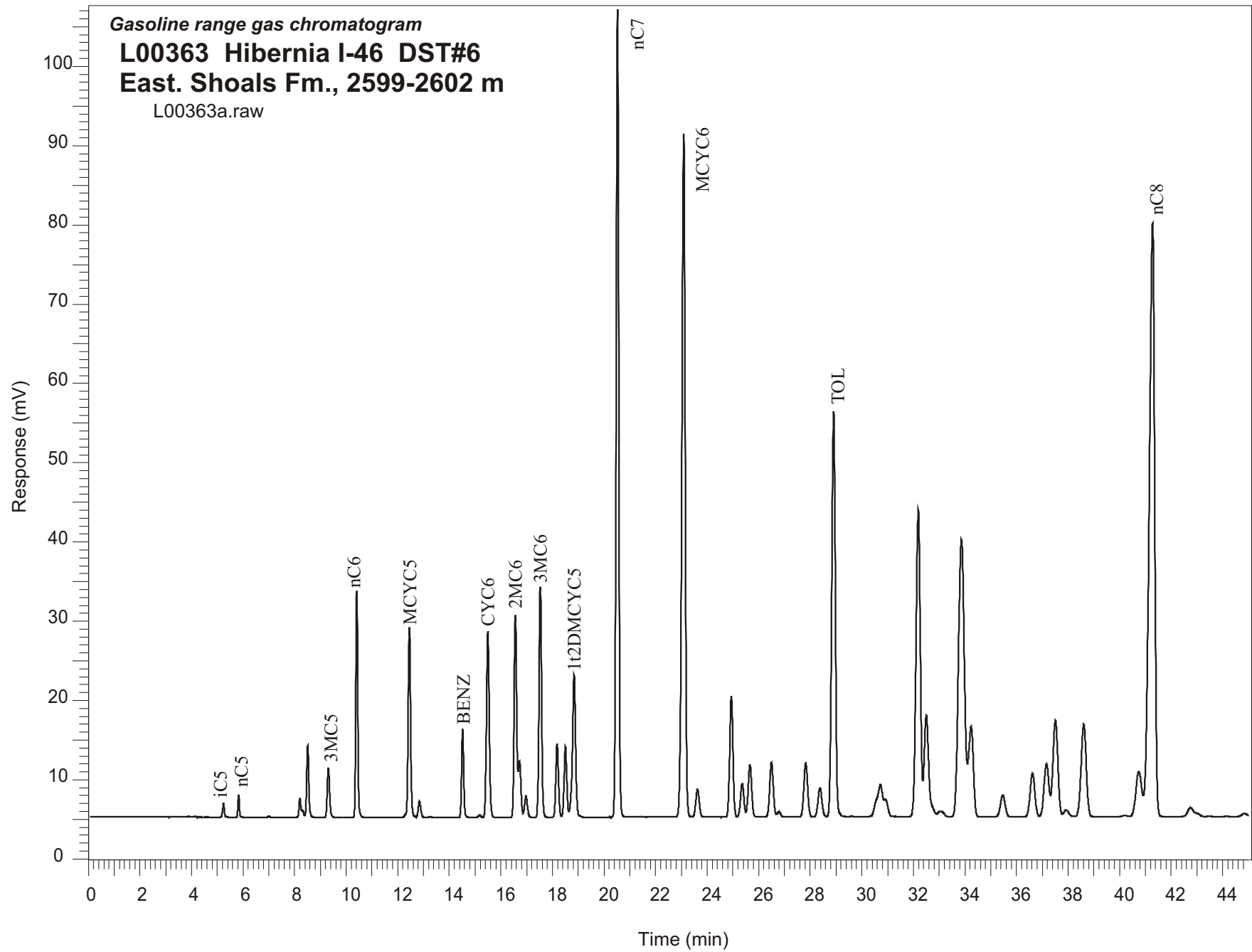


Gasoline range gas chromatogram
L00363 Hibernia I-46 DST#6
East. Shoals Fm., 2599-2602 m
L00363a.raw



Sample Name: #363 Hibernia I-46 DST#6

GASOLINE RANGE ANALYSIS DATA

ORGANIC GEOCHEMISTRY LAB GSC CALGARY

Ret Time [min]	Compound	Area	Height [uV]
5.24	iC5	8445	1752
5.83	nC5	10349	2839
7	22DMC4	695	150
8.2	CYC5	12727	2431
8.31	23DMC4	4313	910
8.5	2MC5	52087	9022
9.31	3MC5	39625	6205
10.41	nC6	147888	28578
12.45	MCYC5	156411	24016
12.84	24DMC5	14865	2034
13.27	223TMC4	580	90
14.52	Benzene	64915	11244
15.17	33DMC5	2429	343
15.49	CYC6	178765	23497
16.56	2MC6	177656	25567
16.72	23DMC5	48563	7128
16.97	11DMCYC5	20749	2688
17.53	3MC6	205994	29103
18.18	1c3DMCYC5	68175	9352
18.51	1t3DMCYC5	66178	8997
18.84	1t2DMCYC5	156012	17973
20.53	nC7	712025	101892
23.09	MCYC6	768438	86260
23.63	22DMC6	32813	3518
24.94	ECYC5	132557	15258
25.36	25DMC6	38907	4200
25.66	24DMC6	62477	6586
26.5	223TMC5	68868	6911
28.38	234TMC5	39133	3669
28.91	Toluene	491318	51135
32.19	2MC7	447084	38717
34.24	3MC7	148080	11436
40.74	1c4DMCYC6	89393	5690
41.28	nC8	1101457	74844