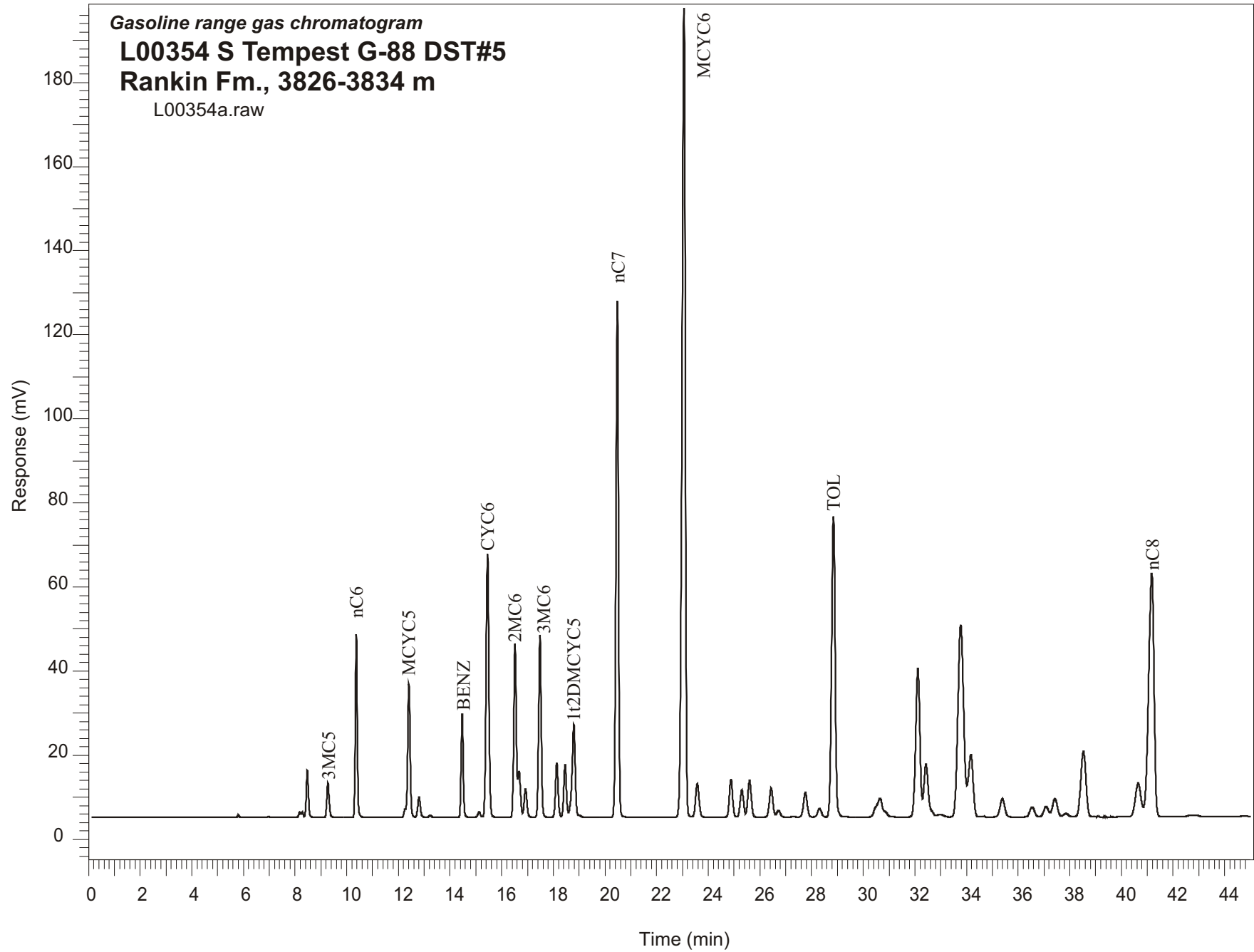


Gasoline range gas chromatogram
L00354 S Tempest G-88 DST#5
Rankin Fm., 3826-3834 m
L00354a.raw



Sample Name: #354 S. Tempest G-88 DST#5

GASOLINE RANGE ANALYSIS DATA

ORGANIC GEOCHEMISTRY LAB GSC CALGARY

| Ret Time [min] | Compound | Area | Height [uV] |
|-------------------|-----------|---------|----------------|
| 5.22 | iC5 | 270 | 48 |
| 5.8 | nC5 | 2315 | 640 |
| 6.96 | 22DMC4 | 937 | 203 |
| 8.17 | CYC5 | 6434 | 1317 |
| 8.28 | 23DMC4 | 7009 | 1289 |
| 8.47 | 2MC5 | 63991 | 11173 |
| 9.27 | 3MC5 | 51779 | 8256 |
| 10.37 | nC6 | 224101 | 43665 |
| 12.41 | MCYC5 | 213783 | 31719 |
| 12.8 | 24DMC5 | 34820 | 4865 |
| 13.22 | 223TMC4 | 3331 | 492 |
| 14.47 | Benzene | 139769 | 24479 |
| 15.12 | 33DMC5 | 8824 | 1255 |
| 15.45 | CYC6 | 471194 | 62512 |
| 16.52 | 2MC6 | 286199 | 41340 |
| 16.67 | 23DMC5 | 73478 | 11088 |
| 16.92 | 11DMCYC5 | 50294 | 6647 |
| 17.48 | 3MC6 | 305262 | 43426 |
| 18.13 | 1c3DMCYC5 | 93513 | 12891 |
| 18.46 | 1t3DMCYC5 | 91206 | 12452 |
| 18.79 | 1t2DMCYC5 | 194912 | 22118 |
| 20.48 | nC7 | 857169 | 122935 |
| 23.06 | MCYC6 | 1700218 | 192349 |
| 23.58 | 22DMC6 | 74029 | 7957 |
| 24.88 | ECYC5 | 77162 | 9002 |
| 25.3 | 25DMC6 | 58919 | 6474 |
| 25.6 | 24DMC6 | 80625 | 8698 |
| 26.44 | 223TMC5 | 67365 | 6937 |
| 28.31 | 234TMC5 | 20859 | 1975 |
| 28.85 | Toluene | 690365 | 71623 |
| 32.12 | 2MC7 | 404798 | 35304 |
| 34.17 | 3MC7 | 192037 | 14879 |
| 40.65 | 1c4DMCYC6 | 122107 | 8031 |
| 41.17 | nC8 | 839642 | 57985 |