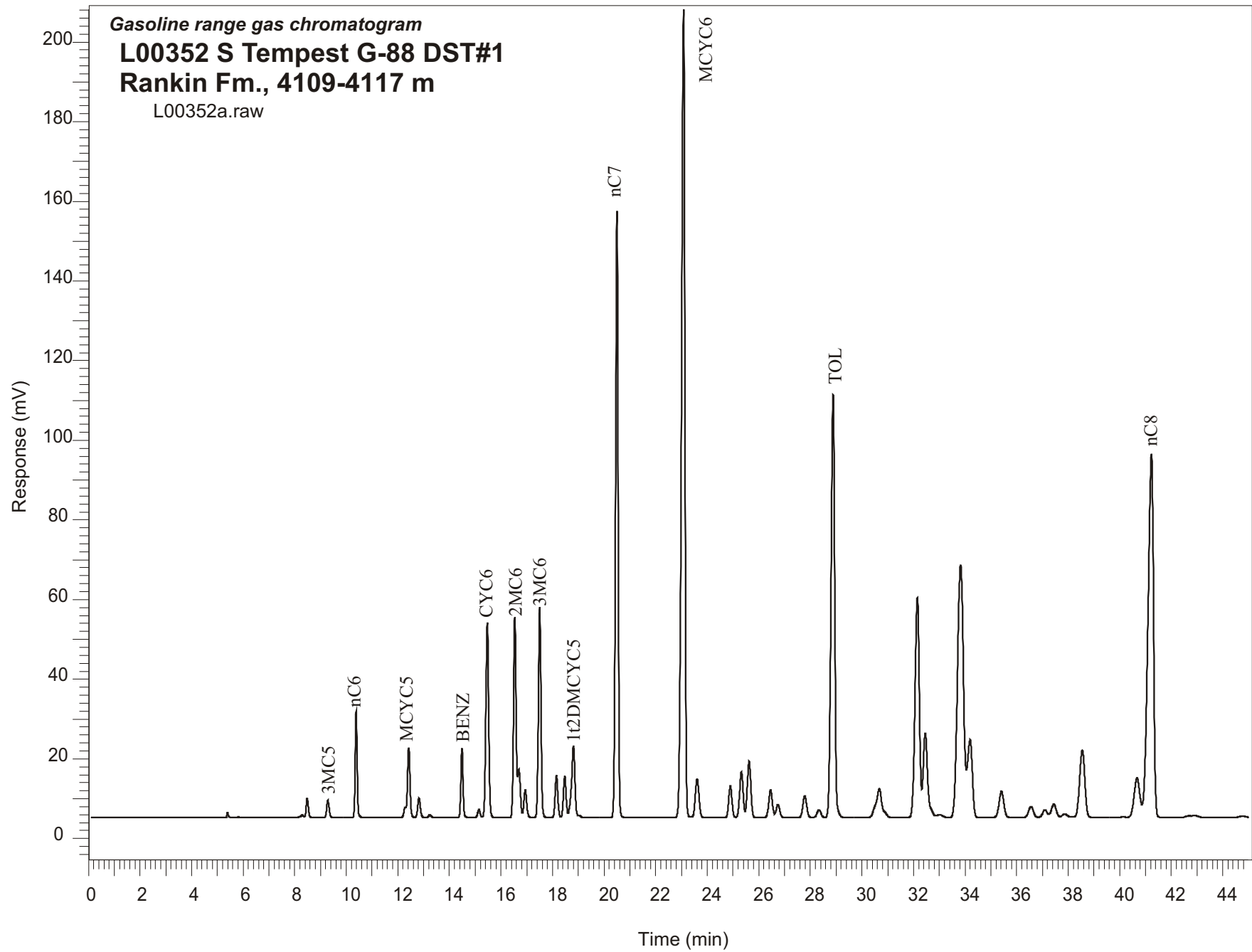


Gasoline range gas chromatogram
L00352 S Tempest G-88 DST#1
Rankin Fm., 4109-4117 m
L00352a.raw



Sample Name: #352 S. Tempest G-88 DST#1

GASOLINE RANGE ANALYSIS DATA

ORGANIC GEOCHEMISTRY LAB GSC CALGARY

Ret Time [min]	Compound	Area	Height [uV]
5.39	iC5	4296	1305
5.8	nC5	411	116
6.97	22DMC4	414	84
8.19	CYC5	1012	250
8.29	23DMC4	3819	633
8.48	2MC5	28906	4855
9.29	3MC5	28644	4372
10.38	nC6	139073	26772
12.29	22DMC5	12554	2581
12.42	MCYC5	119114	17562
12.82	24DMC5	35842	4934
13.24	223TMC4	4963	720
14.49	Benzene	101578	17516
15.14	33DMC5	14203	1970
15.47	CYC6	375673	48982
16.54	2MC6	354949	50371
16.69	23DMC5	81144	12159
16.94	11DMCYC5	52554	6889
17.5	3MC6	377606	52812
18.15	1c3DMCYC5	79082	10644
18.47	1t3DMCYC5	78852	10531
18.81	1t2DMCYC5	169840	18163
20.5	nC7	1072551	152344
23.08	MCYC6	1827753	202797
23.61	22DMC6	95899	9810
24.9	ECYC5	68623	7945
25.33	25DMC6	106160	11470
25.62	24DMC6	134026	14180
26.46	223TMC5	68700	6959
28.34	234TMC5	20441	1893
28.88	Toluene	1040968	106249
32.15	2MC7	642959	54994
34.2	3MC7	256549	19588
40.67	1c4DMCYC6	152603	9942
41.23	nC8	1359478	91330