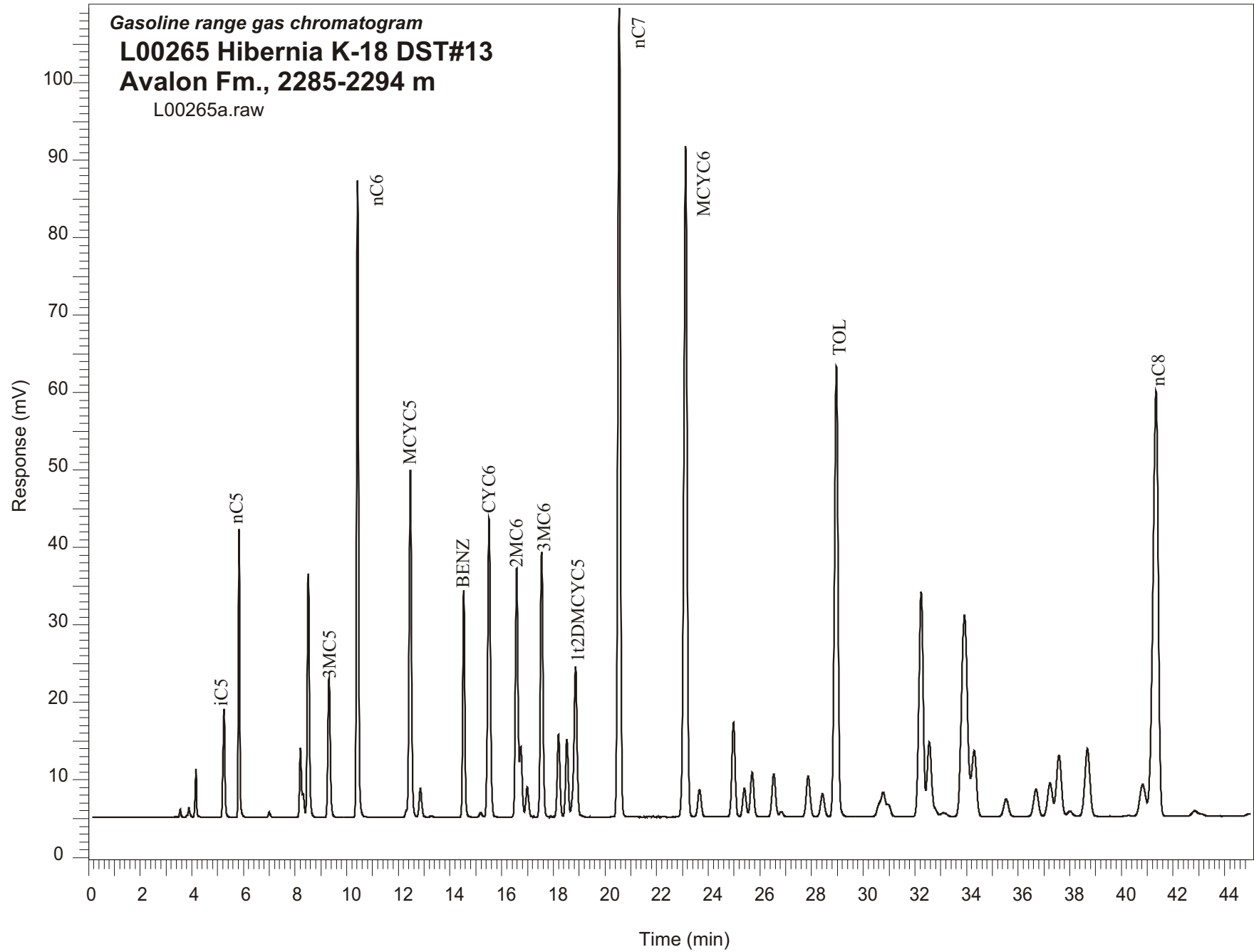


Gasoline range gas chromatogram
L00265 Hibernia K-18 DST#13
Avalon Fm., 2285-2294 m
L00265a.raw



Sample Name: #265 Hibernia K-18 DST #13

GASOLINE RANGE ANALYSIS DATA

ORGANIC GEOCHEMISTRY LAB GSC CALGARY

Ret Time [min]	Compound	Area	Height [uV]
5.25	iC5	75738	14061
5.83	nC5	136485	37301
7	22DMC4	3306	682
8.21	CYC5	47020	8932
8.31	23DMC4	13824	3099
8.51	2MC5	182153	31489
9.32	3MC5	113927	17987
10.42	nC6	421951	82190
12.46	MCYC5	292254	44847
12.85	24DMC5	26741	3759
13.28	223TMC4	1209	187
14.53	Benzene	166880	29234
15.18	33DMC5	4136	587
15.51	CYC6	289372	38614
16.58	2MC6	223059	32145
16.74	23DMC5	60723	9060
16.99	11DMCYC5	29393	3916
17.55	3MC6	241911	34277
18.2	1c3DMCYC5	77665	10685
18.53	1t3DMCYC5	73489	10025
18.86	1t2DMCYC5	166945	19478
20.55	nC7	726478	104412
23.12	MCYC6	765421	86647
23.66	22DMC6	32541	3536
24.98	ECYC5	105454	12166
25.4	25DMC6	34034	3698
25.7	24DMC6	53562	5723
26.54	223TMC5	53891	5523
28.42	234TMC5	31476	2962
28.96	Toluene	556989	58117
32.25	2MC7	332643	29013
34.3	3MC7	111231	8521
40.82	1c4DMCYC6	63854	4104
41.34	nC8	800400	54901