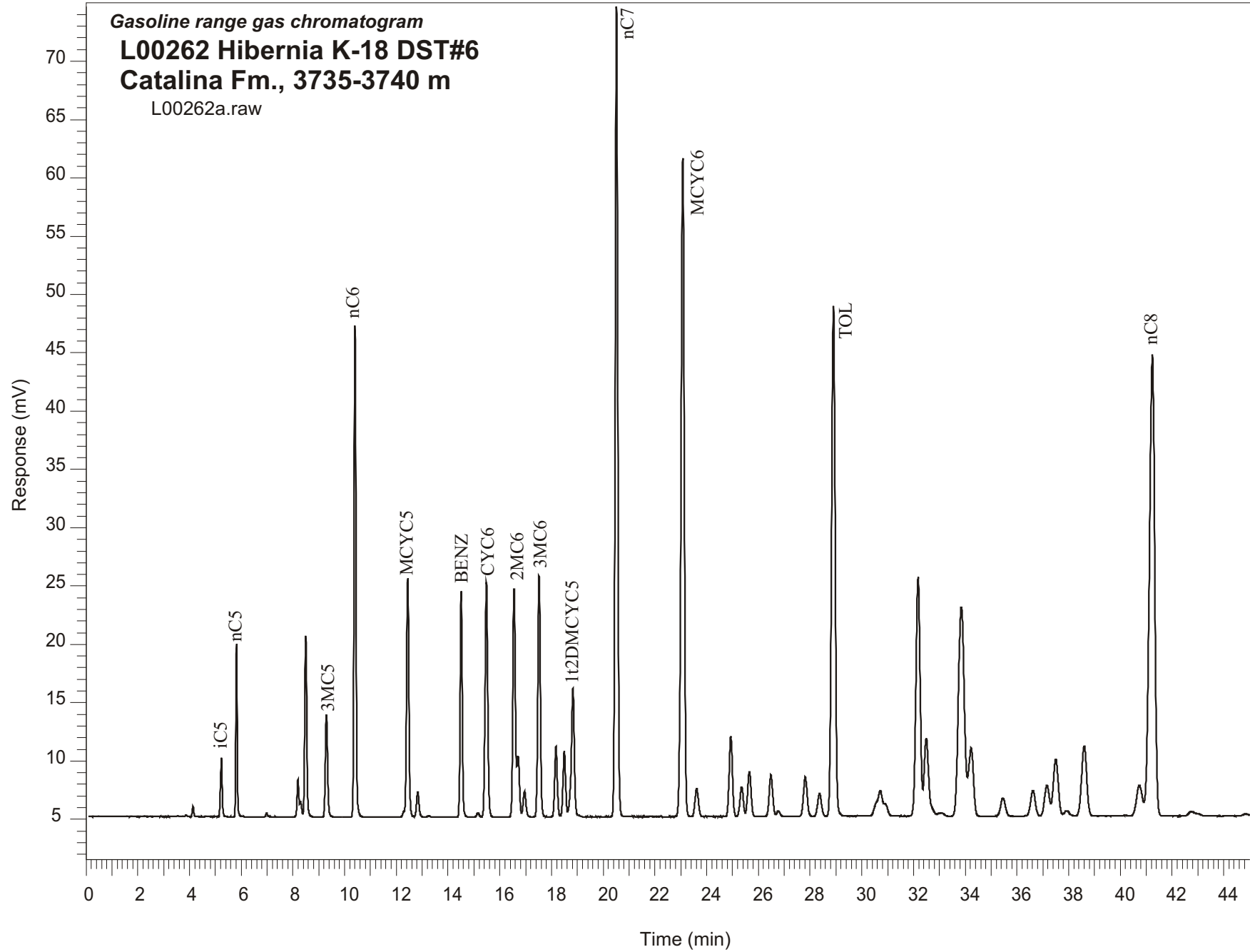


Gasoline range gas chromatogram
L00262 Hibernia K-18 DST#6
Catalina Fm., 3735-3740 m
L00262a.raw



Sample Name: #262 Hibernia K-18 DST#8

GASOLINE RANGE ANALYSIS DATA

ORGANIC GEOCHEMISTRY LAB GSC CALGARY

Ret Time [min]	Compound	Area	Height [uV]
5.23	iC5	24630	5059
5.82	nC5	53460	14876
6.99	22DMC4	1418	310
8.19	CYC5	16113	3213
8.3	23DMC4	6386	1314
8.49	2MC5	85848	15551
9.3	3MC5	52746	8786
10.4	nC6	216121	42263
12.44	MCYC5	130851	20486
12.83	24DMC5	14712	2132
13.25	223TMC4	629	95
14.51	Benzene	110693	19423
15.16	33DMC5	2533	362
15.48	CYC6	145157	20131
16.55	2MC6	134459	19576
16.7	23DMC5	33636	5256
16.96	11DMCYC5	16516	2202
17.52	3MC6	143703	20702
18.17	1c3DMCYC5	42602	6033
18.5	1t3DMCYC5	40475	5657
18.83	1t2DMCYC5	92536	10997
20.52	nC7	481493	69420
23.08	MCYC6	485420	56499
23.61	22DMC6	22367	2435
24.94	ECYC5	59739	6920
25.35	25DMC6	23209	2543
25.65	24DMC6	35877	3860
26.49	223TMC5	34310	3568
28.37	234TMC5	20410	1955
28.91	Toluene	417034	43732
32.18	2MC7	232066	20468
34.23	3MC7	75940	5856
40.73	1c4DMCYC6	40660	2634
41.24	nC8	567015	39539