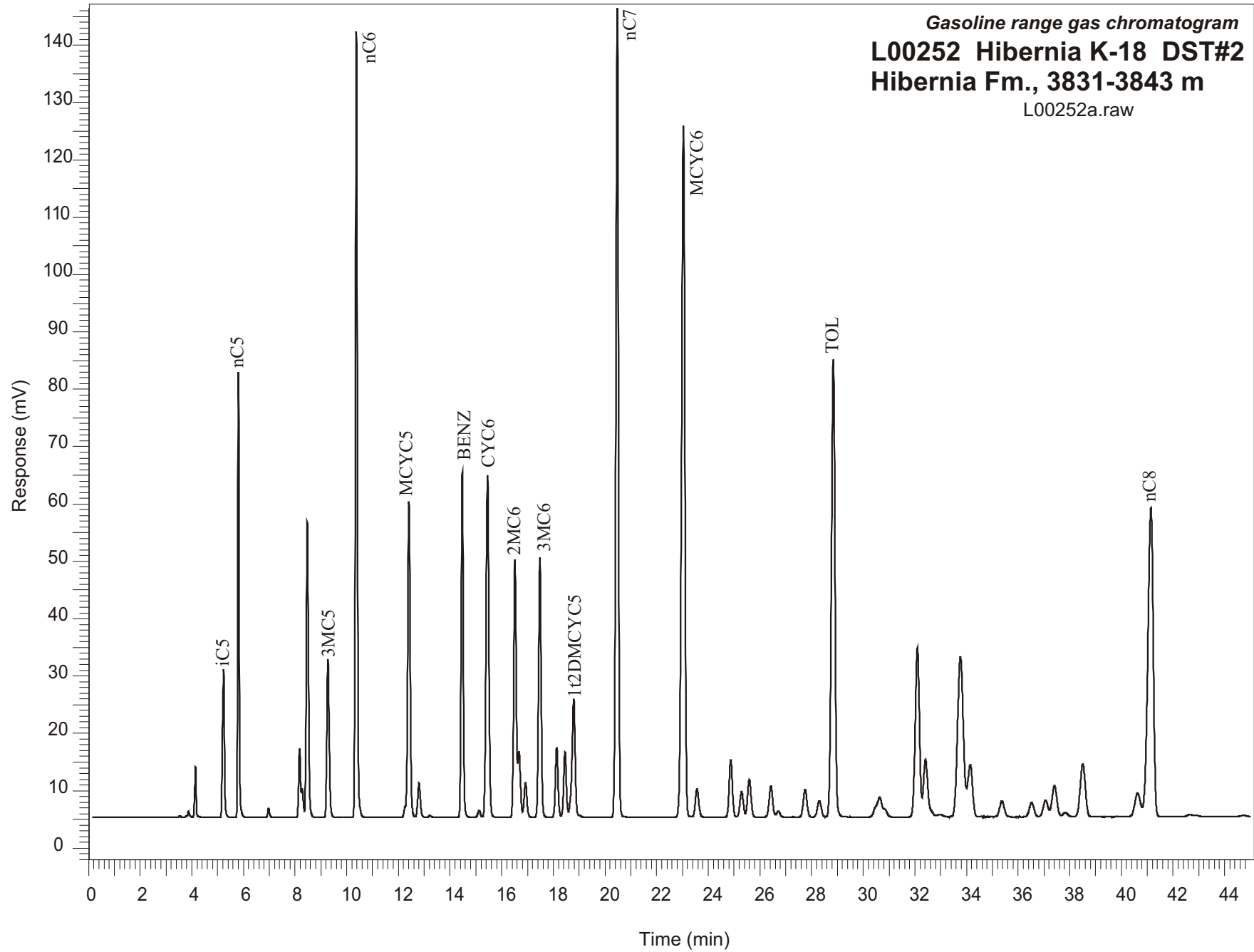


Gasoline range gas chromatogram
L00252 Hibernia K-18 DST#2
Hibernia Fm., 3831-3843 m
L00252a.raw



Sample Name: #252 Hibernia K-18 DST#2

GASOLINE RANGE ANALYSIS DATA

ORGANIC GEOCHEMISTRY LAB GSC CALGARY

Ret Time [min]	Compound	Area	Height [uV]
5.23	iC5	141024	25883
5.8	nC5	277828	77521
6.97	22DMC4	7794	1628
8.17	CYC5	61516	11965
8.28	23DMC4	24499	5029
8.47	2MC5	299573	51596
9.27	3MC5	176257	27621
10.37	nC6	695873	136982
12.41	MCYC5	364297	55102
12.8	24DMC5	42828	5963
13.22	223TMC4	2029	315
14.47	Benzene	341863	60208
15.12	33DMC5	8300	1168
15.45	CYC6	454040	59637
16.52	2MC6	311646	45028
16.67	23DMC5	76728	11545
16.92	11DMCYC5	45397	5977
17.48	3MC6	318257	45341
18.13	1c3DMCYC5	88782	12207
18.45	1t3DMCYC5	83535	11407
18.79	1t2DMCYC5	181507	20652
20.48	nC7	980183	141044
23.04	MCYC6	1059109	120517
23.57	22DMC6	45287	4896
24.87	ECYC5	85728	9974
25.29	25DMC6	40184	4441
25.59	24DMC6	60721	6532
26.43	223TMC5	53417	5496
28.3	234TMC5	29908	2826
28.85	Toluene	765072	79729
32.1	2MC7	337639	29540
34.15	3MC7	118890	9148
40.63	1c4DMCYC6	63318	4147
41.14	nC8	779074	53906