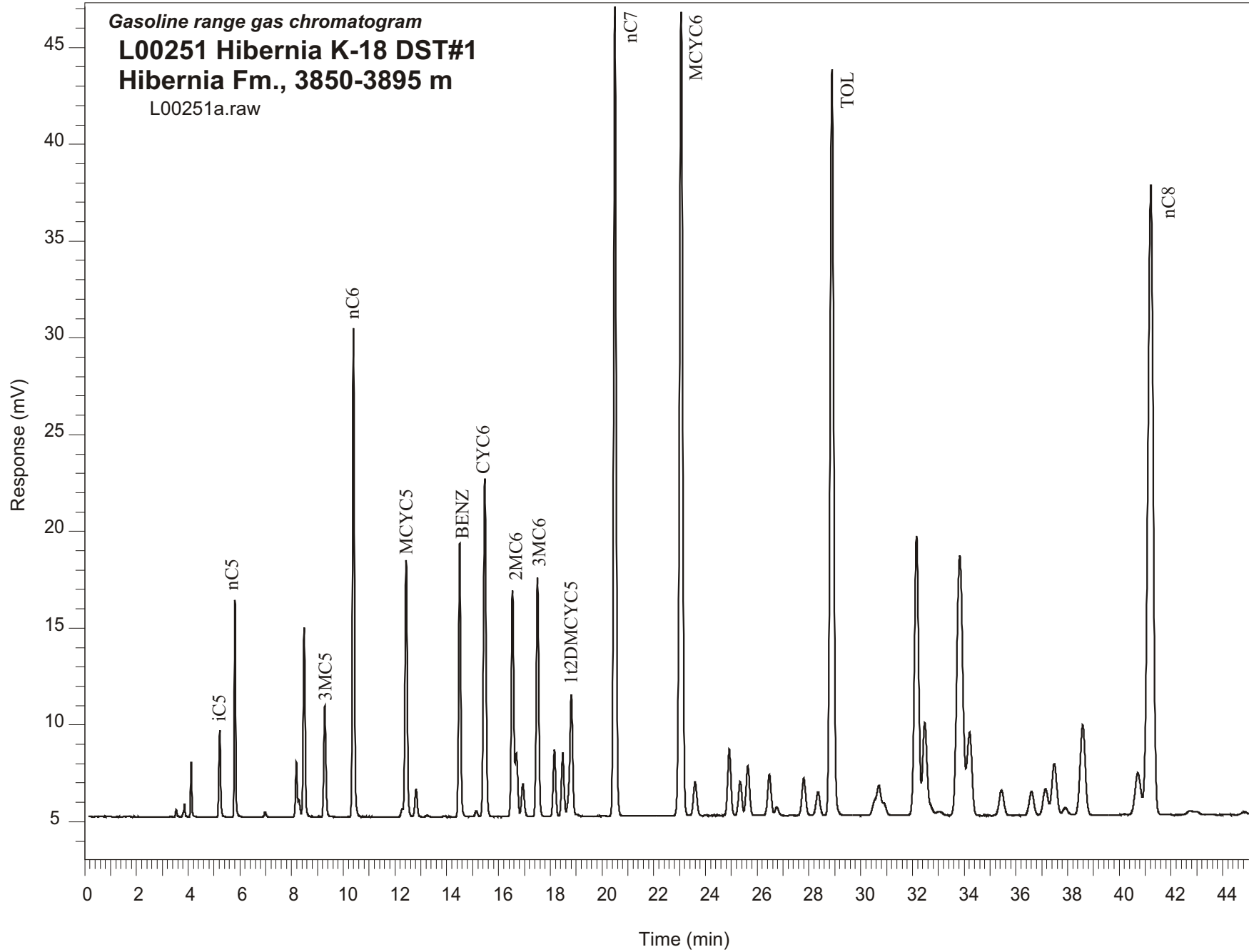


Gasoline range gas chromatogram
L00251 Hibernia K-18 DST#1
Hibernia Fm., 3850-3895 m
L00251a.raw



Sample Name: #251 Hibernia K-18 DST#1

GASOLINE RANGE ANALYSIS DATA

ORGANIC GEOCHEMISTRY LAB GSC CALGARY

Ret Time [min]	Compound	Area	Height [uV]
5.22	iC5	21095	4484
5.81	nC5	38663	11212
6.98	22DMC4	1243	276
8.18	CYC5	13624	2838
8.29	23DMC4	4237	896
8.48	2MC5	50496	9771
9.29	3MC5	32261	5730
10.39	nC6	126654	25229
12.27	22DMC5	1706	403
12.43	MCYC5	80834	13277
12.81	24DMC5	9626	1441
13.24	223TMC4	435	71
14.5	Benzene	80447	14149
15.14	33DMC5	2165	310
15.47	CYC6	120713	17483
16.54	2MC6	79315	11714
16.69	23DMC5	20323	3260
16.94	11DMCYC5	12358	1669
17.51	3MC6	84890	12336
18.16	1c3DMCYC5	23727	3437
18.48	1t3DMCYC5	22338	3232
18.81	1t2DMCYC5	49842	6216
20.5	nC7	287313	41790
23.06	MCYC6	351649	41533
23.6	22DMC6	16073	1739
24.92	ECYC5	29507	3426
25.34	25DMC6	15911	1744
25.64	24DMC6	23636	2549
26.47	223TMC5	20173	2108
28.35	234TMC5	12854	1220
28.89	Toluene	367603	38574
32.16	2MC7	163024	14425
34.21	3MC7	55938	4310
40.72	1c4DMCYC6	33066	2166
41.22	nC8	467770	32555