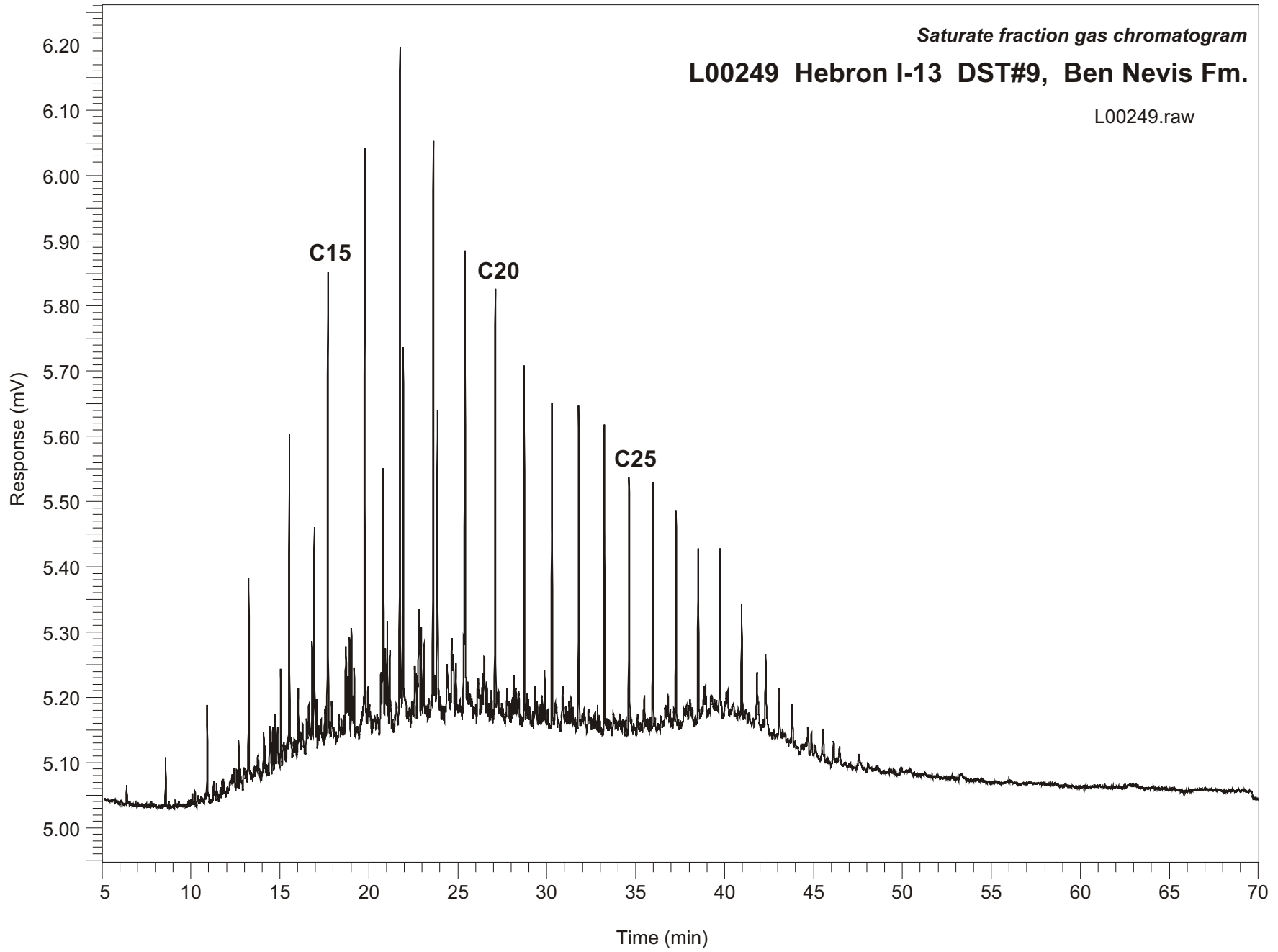


*Saturate fraction gas chromatogram*

**L00249 Hebron I-13 DST#9, Ben Nevis Fm.**

L00249.raw



Sample Name: #249 HEBRON I-13 DST#9 ZONE#10 1905-191

---

SATURATE FRACTION ANALYSIS DATA

---

ORGANIC GEOCHEMISTRY LAB GSC CALGARY

---

Ret Time [min]	Peak	Area [uV]	Height
-------------------	------	--------------	--------

---

8.58	C11	173	75
10.92	C12	320	142
13.25	C13	720	300
15.53	C14	1103	478
17.70	C15	1892	712
19.78	C16	2263	872
21.75	C17	2758	1007
21.93	Pr	1611	546
23.62	C18	2128	850
23.86	Ph	1380	441
25.41	C19	2390	711
27.11	C20	1696	653
28.73	C21	1501	545
30.30	C22	1320	493
31.80	C23	1298	493
33.24	C24	1238	474
34.63	C25	1160	393
35.97	C26	1012	374
37.27	C27	916	331
38.52	C28	748	260
39.73	C29	668	245
40.96	C30	613	174
42.31	C31	548	115
43.81	C32	281	64