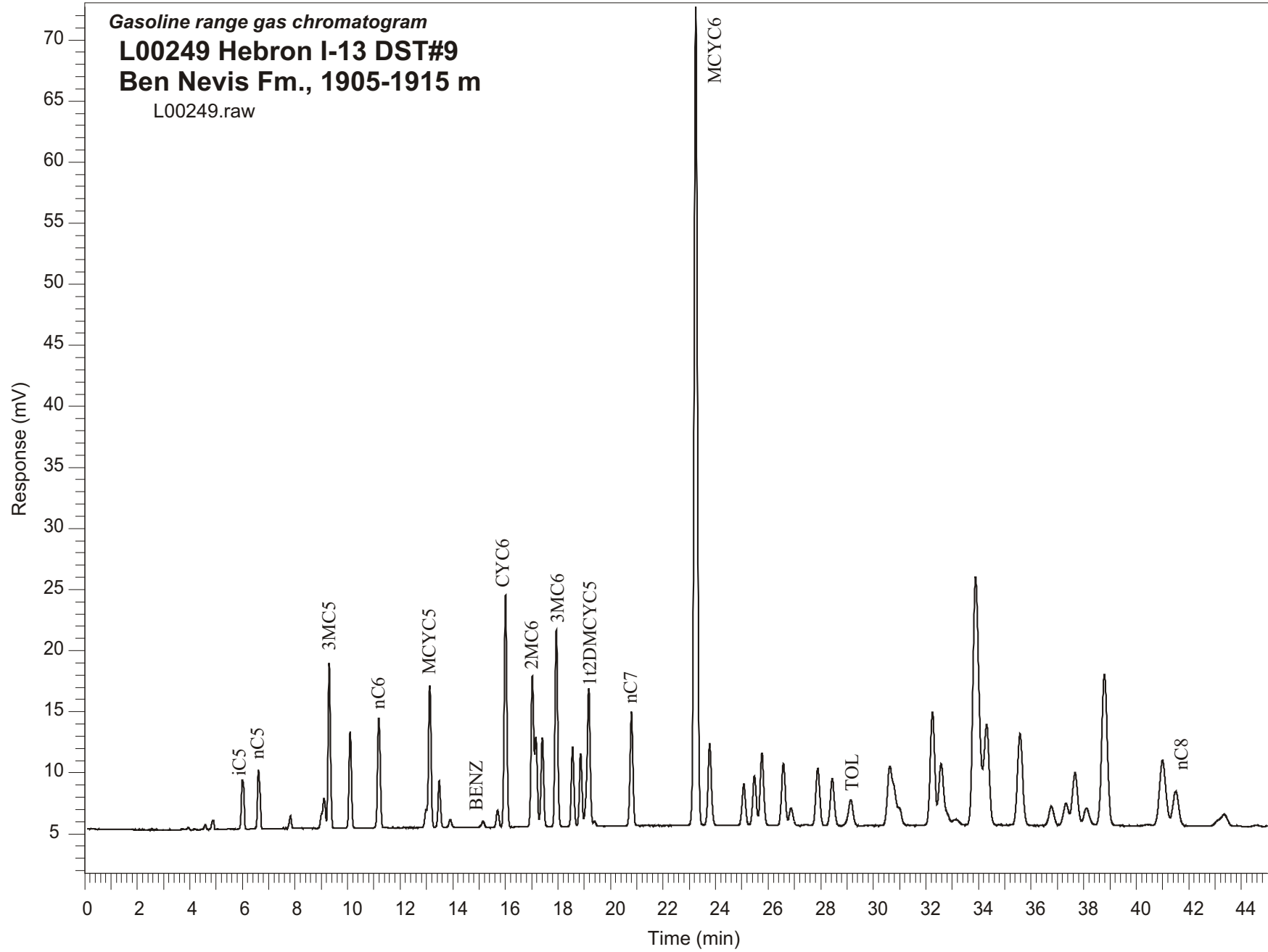


Gasoline range gas chromatogram  
**L00249 Hebron I-13 DST#9**  
**Ben Nevis Fm., 1905-1915 m**  
L00249.raw



Sample Name: #249 HEBRON I-13 1905-1915m

-----  
GASOLINE RANGE ANALYSIS DATA  
-----

ORGANIC GEOCHEMISTRY LAB GSC CALGARY  
-----

Ret Time [min]	Compound	Area	Height [uV]
6	iC5	28148	4007
6.61	nC5	32669	4833
7.83	22DMC4	5783	1032
9.1	23DMC4	22045	2436
9.3	2MC5	82121	13502
10.1	3MC5	49424	7903
11.19	nC6	65605	8948
12.98	22DMC5	6906	1453
13.12	MCYC5	79682	11603
13.49	24DMC5	24577	3815
13.91	223TMC4	4354	640
15.16	Benzene	3789	501
15.71	33DMC5	9843	1421
16.01	CYC6	130704	19012
17.03	2MC6	87117	12351
17.16	23DMC5	47846	7341
17.4	11DMCYC5	51584	7291
17.94	3MC6	113305	16117
18.56	1c3DMCYC5	46090	6511
18.87	1t3DMCYC5	42529	5978
19.17	1t2DMCYC5	94646	11268
20.8	nC7	71634	9365
23.24	MCYC6	578629	66965
23.77	22DMC6	61724	6686
25.07	ECYC5	30766	3393
25.48	25DMC6	37958	4056
25.77	24DMC6	56384	5927
26.58	223TMC5	49817	5087
28.44	234TMC5	40864	3847
29.14	Toluene	26768	2123
32.25	2MC7	109733	9219
34.31	3MC7	116936	8225
41	1c4DMCYC6	90634	5360
41.51	nC8	43789	2810