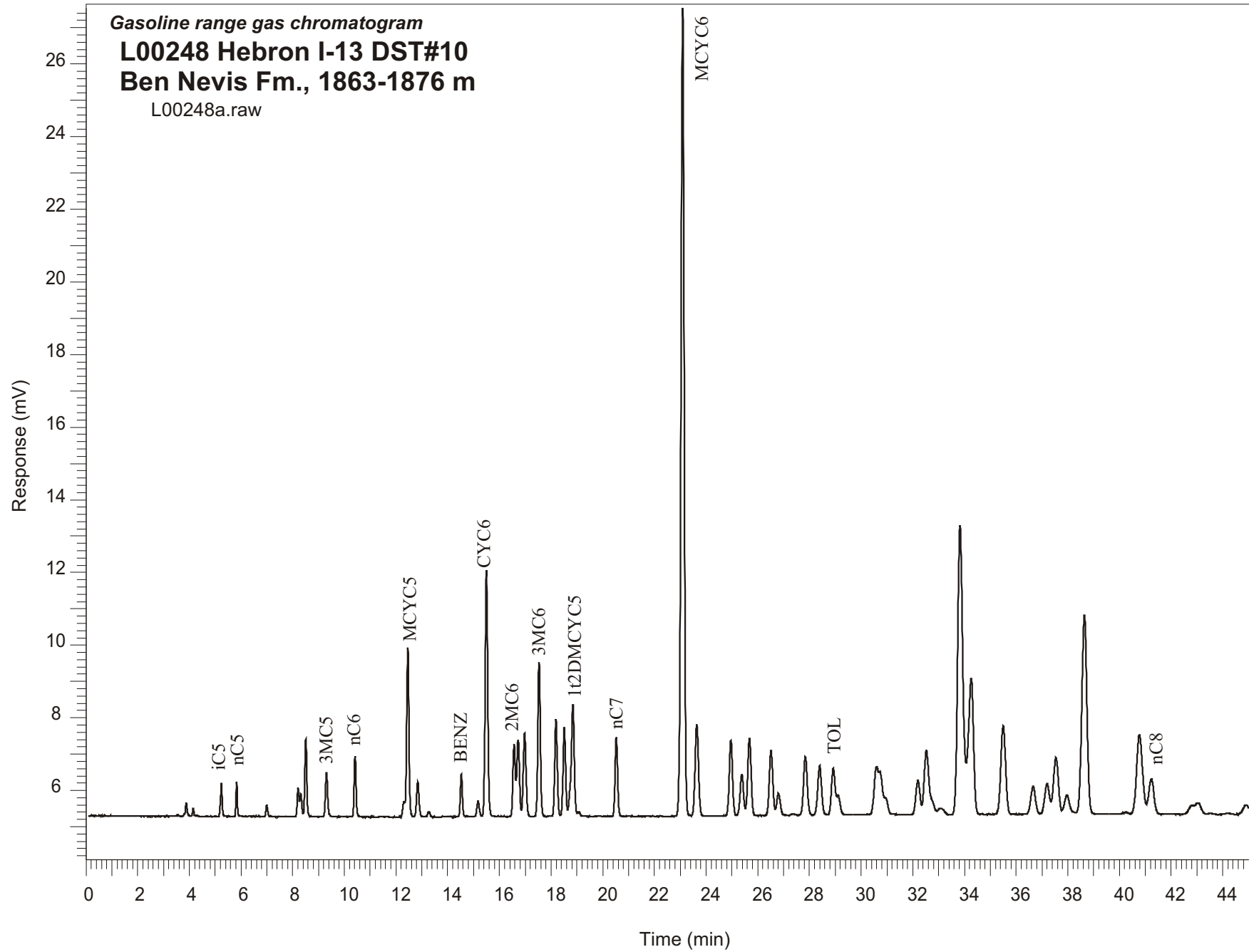


Gasoline range gas chromatogram  
**L00248 Hebron I-13 DST#10**  
**Ben Nevis Fm., 1863-1876 m**  
L00248a.raw



Sample Name: #248 Hebron I-13 DST #10

-----  
GASOLINE RANGE ANALYSIS DATA  
-----

ORGANIC GEOCHEMISTRY LAB GSC CALGARY  
-----

Ret Time [min]	Compound	Area	Height [uV]
5.24	iC5	4129	901
5.83	nC5	3364	967
7	22DMC4	1470	322
8.21	CYC5	3808	791
8.31	23DMC4	3372	632
8.51	2MC5	11287	2125
9.31	3MC5	7199	1209
10.41	nC6	8477	1664
12.31	22DMC5	2235	423
12.45	MCYC5	28819	4666
12.84	24DMC5	6334	952
13.27	223TMC4	941	145
14.53	Benzene	6466	1161
15.18	33DMC5	2879	423
15.5	CYC6	47970	6777
16.57	2MC6	13102	2003
16.72	23DMC5	15182	2112
16.98	11DMCYC5	17313	2309
17.54	3MC6	29005	4239
18.19	1c3DMCYC5	18336	2661
18.51	1t3DMCYC5	16842	2422
18.85	1t2DMCYC5	26766	3057
20.53	nC7	14814	2170
23.09	MCYC6	189256	22249
23.64	22DMC6	23057	2519
24.96	ECYC5	17921	2078
25.38	25DMC6	10491	1135
25.68	24DMC6	19707	2122
26.52	223TMC5	17143	1785
28.4	234TMC5	13923	1345
28.92	Toluene	12949	1288
32.2	2MC7	10538	950
34.26	3MC7	52639	3742
40.77	1c4DMCYC6	34668	2167
41.23	nC8	13570	964