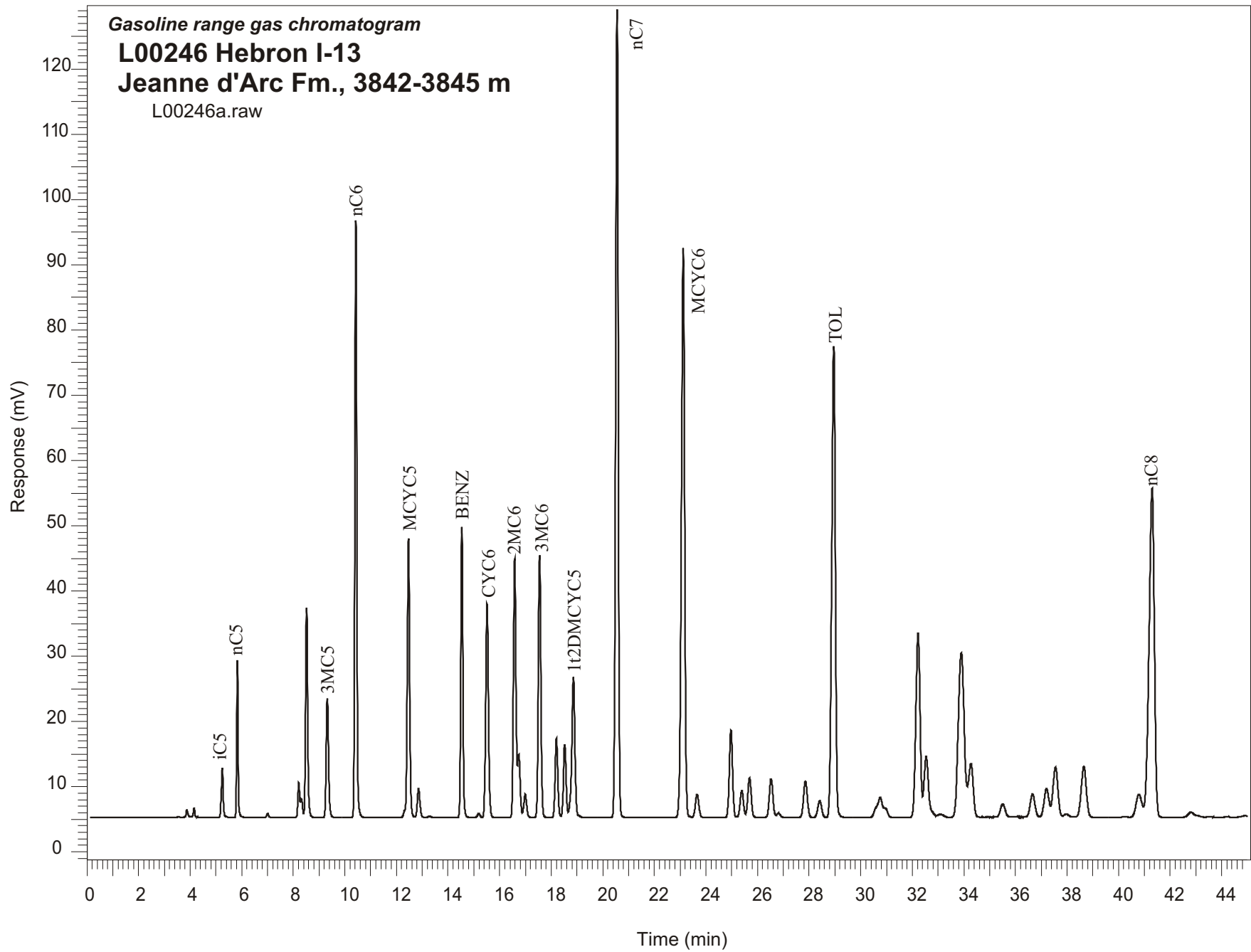


Gasoline range gas chromatogram  
**L00246 Hebron I-13**  
**Jeanne d'Arc Fm., 3842-3845 m**  
L00246a.raw



Sample Name: #246 Hebron I-13 3842-3 Jeanne d-Ard Fm.

-----  
GASOLINE RANGE ANALYSIS DATA  
-----

ORGANIC GEOCHEMISTRY LAB GSC CALGARY  
-----

Ret Time [min]	Compound	Area	Height [uV]
5.25	iC5	39448	7651
5.83	nC5	88318	24064
7	22DMC4	2987	638
8.21	CYC5	27283	5364
8.32	23DMC4	14432	2836
8.51	2MC5	183820	32125
9.32	3MC5	114459	18204
10.42	nC6	469403	91518
12.47	MCYC5	277211	42732
12.86	24DMC5	32202	4479
13.29	223TMC4	1372	210
14.54	Benzene	256145	44649
15.19	33DMC5	4761	664
15.51	CYC6	246453	32735
16.59	2MC6	272021	39742
16.74	23DMC5	64739	9697
16.99	11DMCYC5	27543	3606
17.55	3MC6	280234	40231
18.2	1c3DMCYC5	87278	12147
18.53	1t3DMCYC5	81938	11262
18.86	1t2DMCYC5	185041	21516
20.56	nC7	863868	123886
23.12	MCYC6	769089	87303
23.66	22DMC6	33303	3552
24.97	ECYC5	115552	13411
25.39	25DMC6	38054	4169
25.69	24DMC6	56672	6067
26.53	223TMC5	58237	5953
28.41	234TMC5	27714	2612
28.96	Toluene	692150	72211
32.23	2MC7	323064	28277
34.28	3MC7	106412	8238
40.79	1c4DMCYC6	54433	3511
41.3	nC8	729922	50472