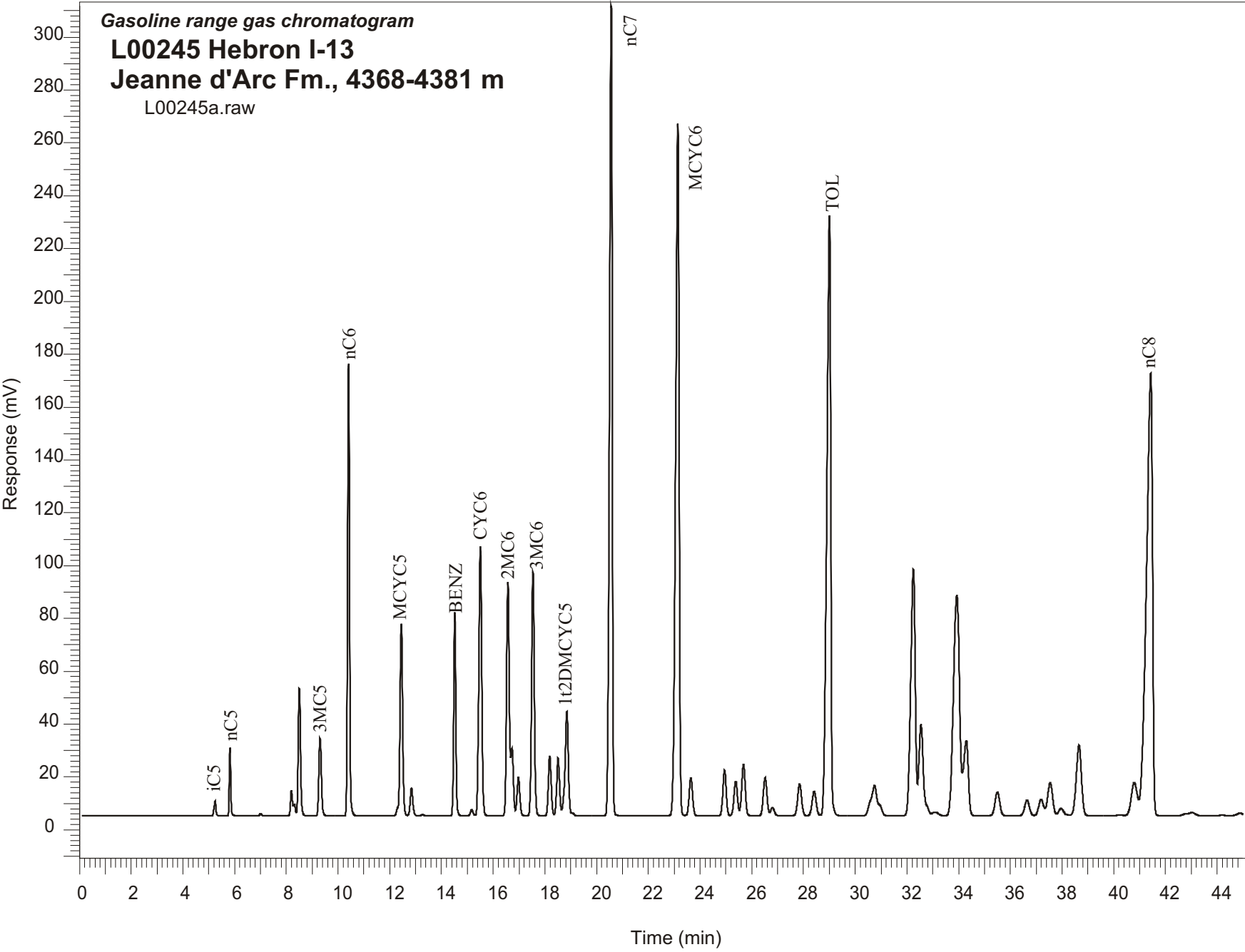


Gasoline range gas chromatogram  
**L00245 Hebron I-13**  
**Jeanne d'Arc Fm., 4368-4381 m**  
L00245a.raw



Sample Name: #245 Hebron I-13 4368-4

-----  
GASOLINE RANGE ANALYSIS DATA  
-----

ORGANIC GEOCHEMISTRY LAB GSC CALGARY  
-----

Ret Time [min]	Compound	Area	Height [uV]
5.25	iC5	30205	5755
5.82	nC5	97780	25786
7	22DMC4	4120	872
8.2	CYC5	52790	9719
8.31	23DMC4	22446	4531
8.5	2MC5	303872	48217
9.31	3MC5	198619	29242
10.41	nC6	890140	171075
12.45	MCYC5	515356	72622
12.84	24DMC5	76973	10601
13.27	223TMC4	2934	446
14.52	Benzene	439982	77161
15.17	33DMC5	16386	2295
15.5	CYC6	814066	102038
16.57	2MC6	657189	88523
16.72	23DMC5	167809	25605
16.98	11DMCYC5	109990	14570
17.54	3MC6	688900	92392
18.19	1c3DMCYC5	175979	22656
18.51	1t3DMCYC5	171056	21836
18.85	1t2DMCYC5	358830	39593
20.57	nC7	2251085	306431
23.14	MCYC6	2468039	261967
23.64	22DMC6	130088	14321
24.95	ECYC5	151564	17241
25.38	25DMC6	122657	13002
25.68	24DMC6	185856	19340
26.52	223TMC5	144885	14398
28.41	234TMC5	103202	9260
29	Toluene	2376857	227080
32.25	2MC7	1135520	93385
34.3	3MC7	365513	28413
40.79	1c4DMCYC6	200313	12481
41.43	nC8	2769290	167458