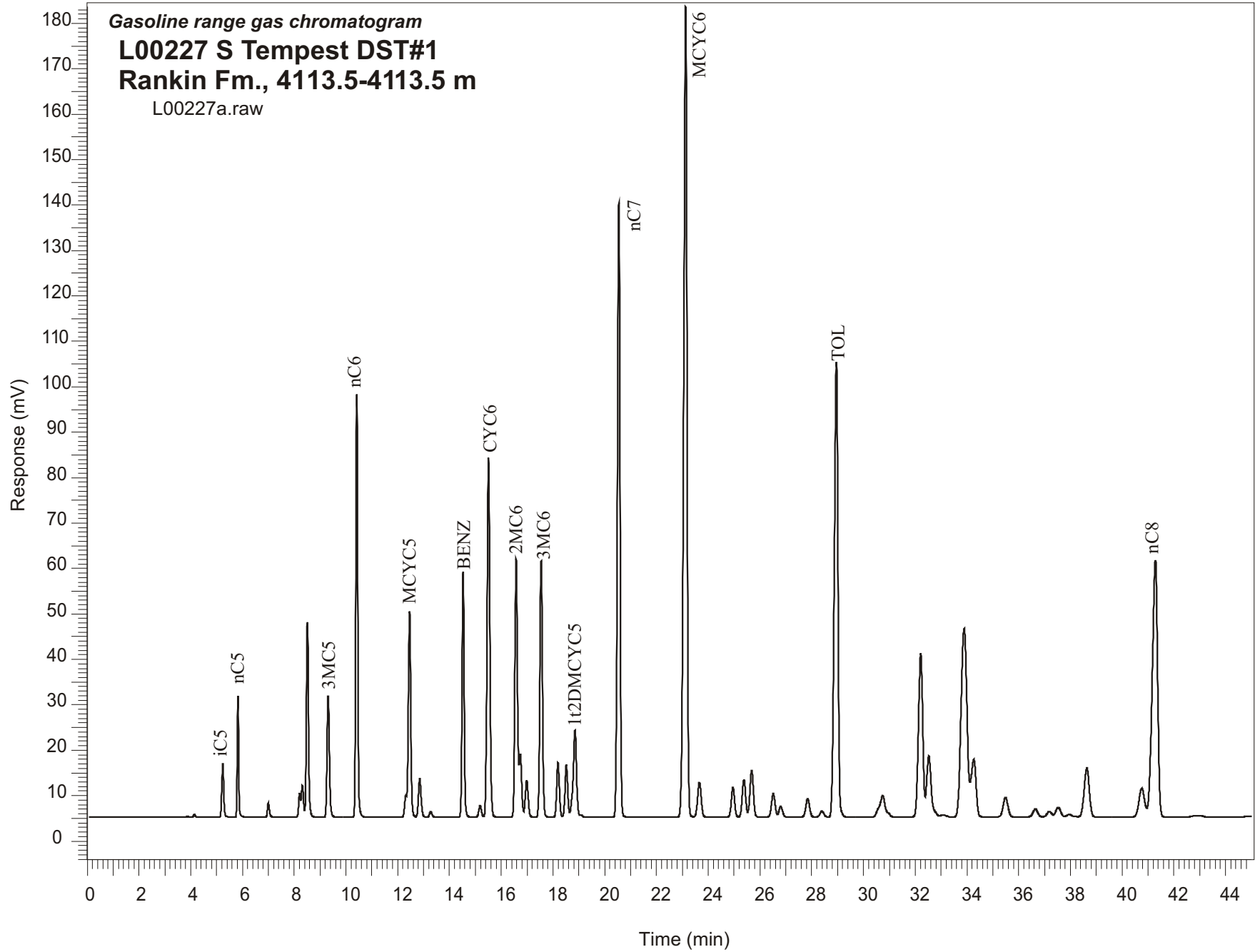


Gasoline range gas chromatogram  
**L00227 S Tempest DST#1**  
**Rankin Fm., 4113.5-4113.5 m**  
L00227a.raw



Sample Name: #227 Mobil et al South Tempest

-----  
GASOLINE RANGE ANALYSIS DATA  
-----

ORGANIC GEOCHEMISTRY LAB GSC CALGARY  
-----

Ret Time [min]	Compound	Area	Height [uV]
5.24	iC5	63884	11718
5.82	nC5	98643	26768
7	22DMC4	16152	3156
8.21	CYC5	25428	5292
8.32	23DMC4	40661	6992
8.51	2MC5	246338	42991
9.31	3MC5	168431	26659
10.42	nC6	480313	93189
12.32	22DMC5	21471	4737
12.46	MCYC5	299448	45390
12.85	24DMC5	62436	8476
13.28	223TMC4	8304	1211
14.53	Benzene	312992	54068
15.18	33DMC5	18945	2578
15.51	CYC6	598299	79043
16.58	2MC6	395564	56795
16.73	23DMC5	91988	13854
16.99	11DMCYC5	63186	8178
17.55	3MC6	397269	56422
18.2	1c3DMCYC5	86957	11997
18.52	1t3DMCYC5	84127	11526
18.85	1t2DMCYC5	176297	19191
20.55	nC7	945536	135271
23.13	MCYC6	1587084	178508
23.66	22DMC6	74395	7642
24.96	ECYC5	56249	6546
25.38	25DMC6	76206	8278
25.68	24DMC6	96227	10282
26.52	223TMC5	50687	5188
28.4	234TMC5	13917	1307
28.95	Toluene	974480	100143
32.21	2MC7	415262	36054
34.27	3MC7	166957	12659
40.76	1c4DMCYC6	95549	6309
41.29	nC8	819801	56566