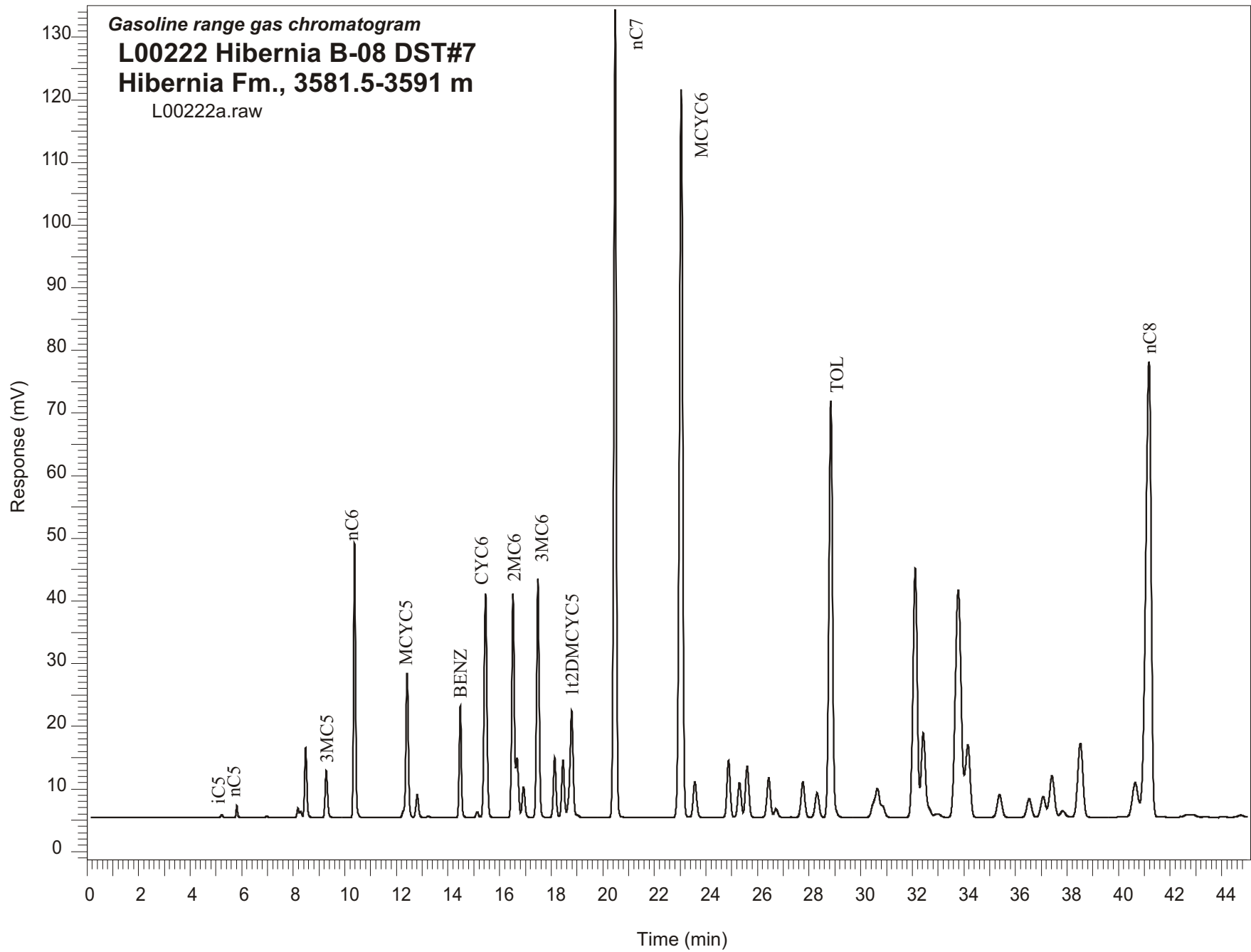


Gasoline range gas chromatogram  
**L00222 Hibernia B-08 DST#7**  
**Hibernia Fm., 3581.5-3591 m**  
L00222a.raw



Sample Name: #222 Hibernia B-08 DST #7

-----  
GASOLINE RANGE ANALYSIS DATA  
-----

ORGANIC GEOCHEMISTRY LAB GSC CALGARY  
-----

Ret Time [min]	Compound	Area	Height [uV]
5.23	iC5	2460	480
5.81	nC5	7104	1884
6.98	22DMC4	928	199
8.18	CYC5	7837	1504
8.29	23DMC4	5368	1018
8.48	2MC5	66629	11223
9.28	3MC5	48813	7533
10.38	nC6	229079	43849
12.41	MCYC5	156852	23031
12.81	24DMC5	26263	3641
13.23	223TMC4	1322	198
14.47	Benzene	103101	17883
15.13	33DMC5	6204	881
15.45	CYC6	273120	35753
16.52	2MC6	250669	35756
16.67	23DMC5	64096	9594
16.93	11DMCYC5	37291	4876
17.49	3MC6	270156	38082
18.14	1c3DMCYC5	68223	9465
18.46	1t3DMCYC5	64386	8971
18.79	1t2DMCYC5	143630	16753
20.48	nC7	902577	129041
23.04	MCYC6	1025159	116212
23.57	22DMC6	52849	5681
24.88	ECYC5	78690	9127
25.3	25DMC6	50660	5537
25.6	24DMC6	76776	8177
26.43	223TMC5	62165	6361
28.31	234TMC5	41230	3907
28.85	Toluene	643537	66524
32.12	2MC7	458657	39793
34.16	3MC7	150189	11569
40.64	1c4DMCYC6	84943	5499
41.18	nC8	1065839	72764