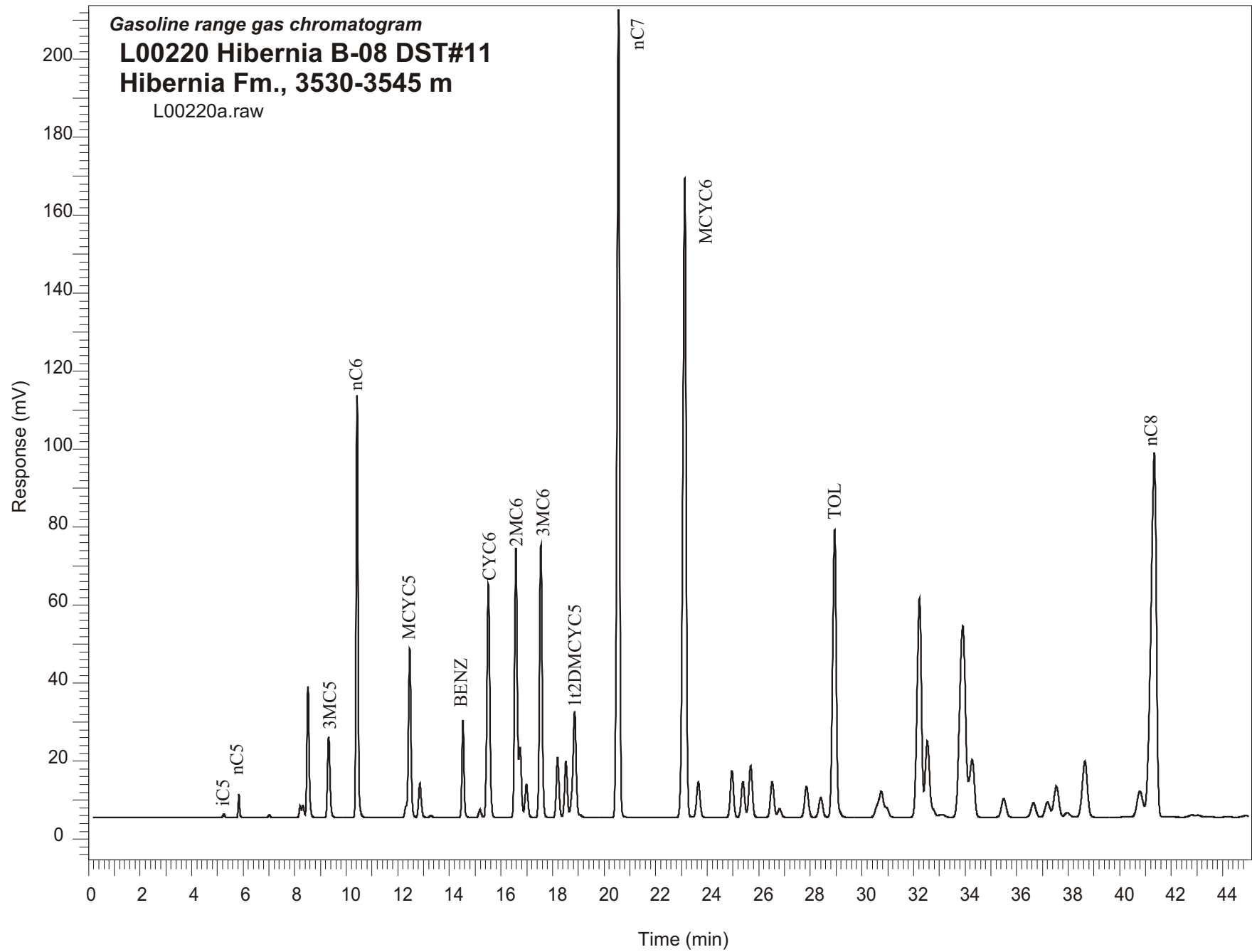


Gasoline range gas chromatogram  
**L00220 Hibernia B-08 DST#11**  
**Hibernia Fm., 3530-3545 m**  
L00220a.raw



Sample Name: #220 Hibernia B-08 DST#1

-----  
GASOLINE RANGE ANALYSIS DATA  
-----

ORGANIC GEOCHEMISTRY LAB GSC CALGARY  
-----

Ret Time [min]	Compound	Area	Height [uV]
5.25	iC5	4811	943
5.83	nC5	22662	5999
7.01	22DMC4	3798	780
8.21	CYC5	15573	3084
8.32	23DMC4	17888	3146
8.51	2MC5	204630	33660
9.32	3MC5	137837	20714
10.42	nC6	563658	108217
12.46	MCYC5	306482	43281
12.86	24DMC5	64846	8732
13.28	223TMC4	3656	534
14.53	Benzene	143696	24890
15.18	33DMC5	14867	2034
15.51	CYC6	470848	59797
16.58	2MC6	492924	69103
16.74	23DMC5	120861	17995
16.99	11DMCYC5	66364	8616
17.55	3MC6	503942	69906
18.2	1c3DMCYC5	112548	15281
18.52	1t3DMCYC5	102920	14067
18.86	1t2DMCYC5	235728	26734
20.56	nC7	1472797	207198
23.13	MCYC6	1484600	164054
23.65	22DMC6	83835	9022
24.96	ECYC5	103875	11974
25.38	25DMC6	85159	9214
25.68	24DMC6	124838	13224
26.52	223TMC5	90458	9169
28.4	234TMC5	54763	5144
28.94	Toluene	718599	73788
32.23	2MC7	658340	56228
34.28	3MC7	193107	14733
40.78	1c4DMCYC6	103307	6614
41.34	nC8	1399957	93617