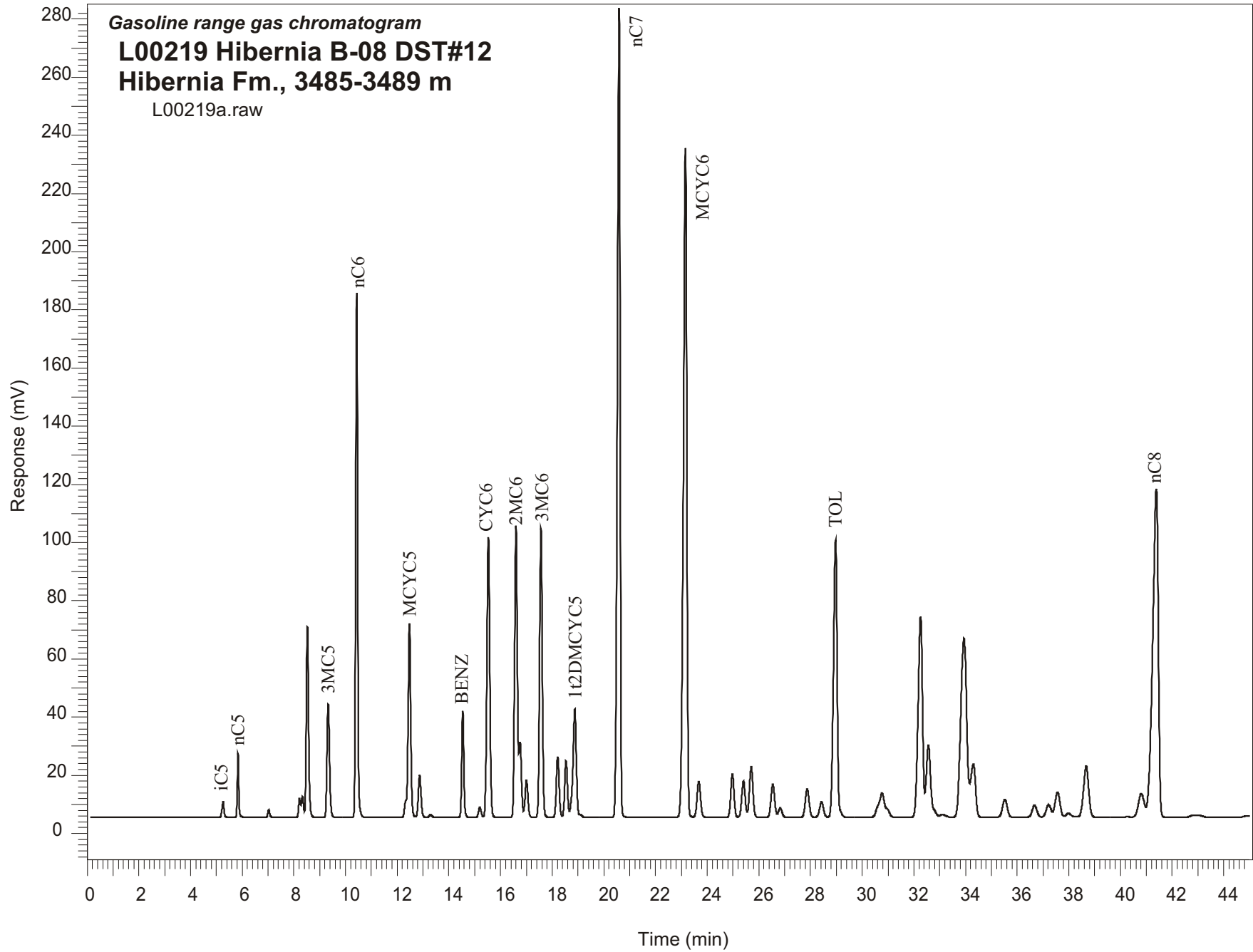


Gasoline range gas chromatogram
L00219 Hibernia B-08 DST#12
Hibernia Fm., 3485-3489 m
L00219a.raw



Sample Name: #219 Hibernia B-08 DST#12

GASOLINE RANGE ANALYSIS DATA

ORGANIC GEOCHEMISTRY LAB GSC CALGARY

Ret Time [min]	Compound	Area	Height [uV]
5.26	iC5	30608	5436
5.84	nC5	85899	22118
7.03	22DMC4	13057	2559
8.22	CYC5	33966	6575
8.34	23DMC4	41537	7303
8.52	2MC5	413388	65672
9.33	3MC5	265678	38934
10.43	nC6	947933	180676
12.47	MCYC5	488292	66716
12.87	24DMC5	107582	14603
13.29	223TMC4	6950	1026
14.54	Benzene	212087	36551
15.2	33DMC5	26353	3600
15.53	CYC6	771859	96351
16.6	2MC6	727997	100181
16.75	23DMC5	171866	25993
17	11DMCYC5	98042	12840
17.57	3MC6	725275	99225
18.21	1c3DMCYC5	158840	20859
18.54	1t3DMCYC5	148815	19406
18.88	1t2DMCYC5	343798	37209
20.59	nC7	2018506	278215
23.16	MCYC6	2131904	230131
23.68	22DMC6	116769	12342
24.98	ECYC5	129055	14837
25.4	25DMC6	116689	12540
25.71	24DMC6	164775	17314
26.54	223TMC5	112771	11314
28.43	234TMC5	57299	5301
28.97	Toluene	936447	95425
32.26	2MC7	816358	69023
34.31	3MC7	240543	18330
40.81	1c4DMCYC6	126090	8039
41.39	nC8	1726909	112765