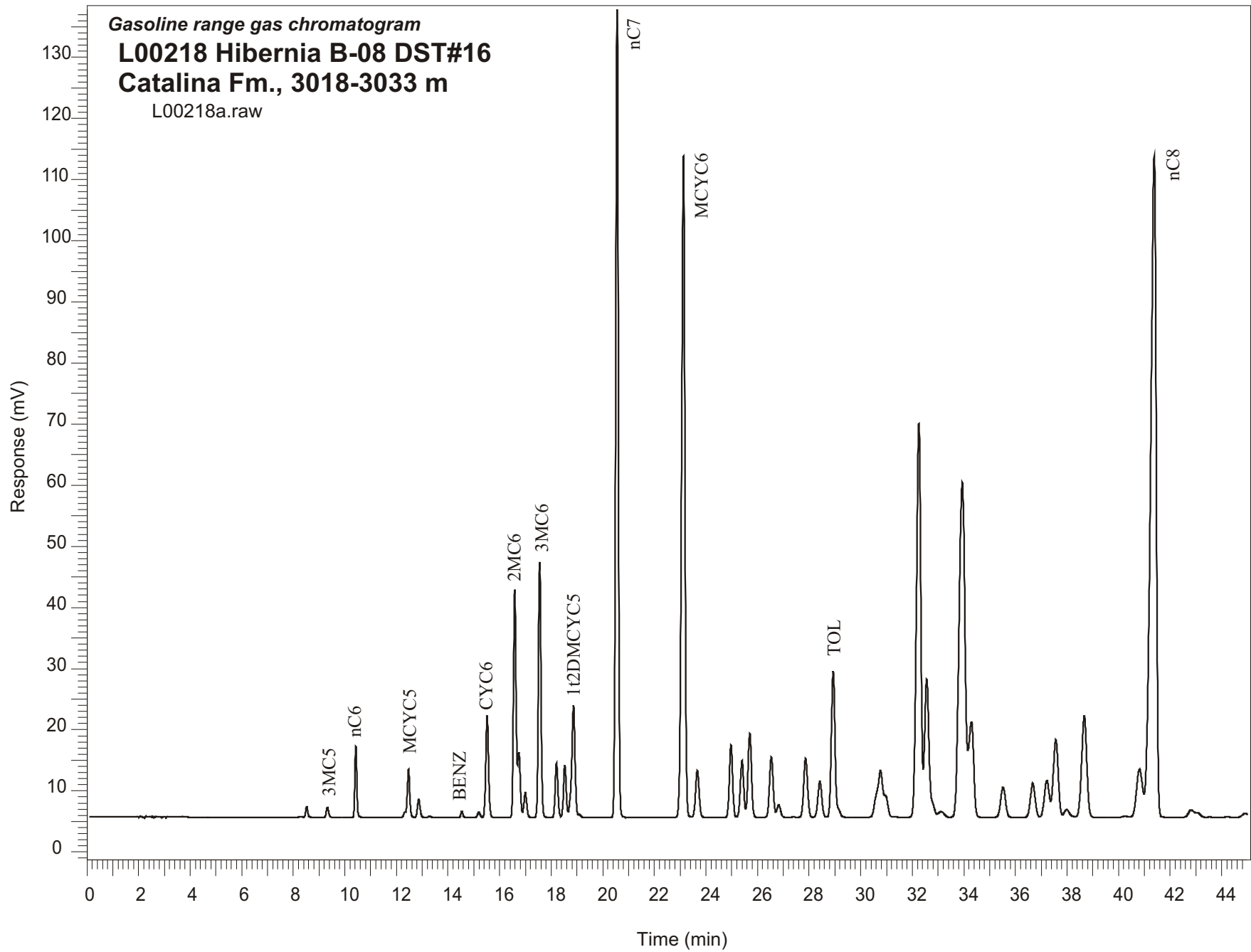


Gasoline range gas chromatogram
L00218 Hibernia B-08 DST#16
Catalina Fm., 3018-3033 m
L00218a.raw



Sample Name: #218 Hibernia B-08 DST#16

GASOLINE RANGE ANALYSIS DATA

ORGANIC GEOCHEMISTRY LAB GSC CALGARY

Ret Time [min]	Compound	Area	Height [uV]
8.32	CYC5	1061	142
8.52	2MC5	10680	1775
9.32	3MC5	10989	1682
10.42	nC6	61262	11686
12.33	22DMC5	4032	880
12.47	MCYC5	53150	7956
12.86	24DMC5	22095	3027
13.28	223TMC4	1441	215
14.54	Benzene	6157	1052
15.19	33DMC5	6454	891
15.51	CYC6	127845	16596
16.59	2MC6	263068	37328
16.74	23DMC5	73107	10676
17	11DMCYC5	31251	4051
17.56	3MC6	298262	41811
18.21	1c3DMCYC5	66091	8925
18.53	1t3DMCYC5	63631	8542
19.08	1t2DMCYC5	2210	312
20.56	nC7	930241	132276
23.13	MCYC6	975848	108305
23.67	22DMC6	72193	7619
24.97	ECYC5	102544	11824
25.4	25DMC6	85732	9262
25.7	24DMC6	130823	13759
26.54	223TMC5	98678	9923
28.42	234TMC5	63177	5930
28.93	Toluene	240577	23937
32.26	2MC7	761049	64441
34.3	3MC7	205140	15706
40.81	1c4DMCYC6	126562	7896
41.38	nC8	1653678	108210